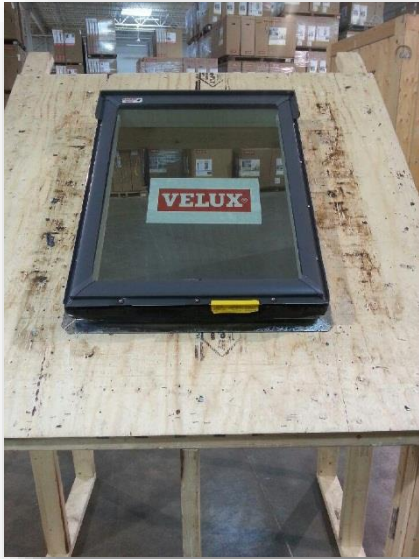
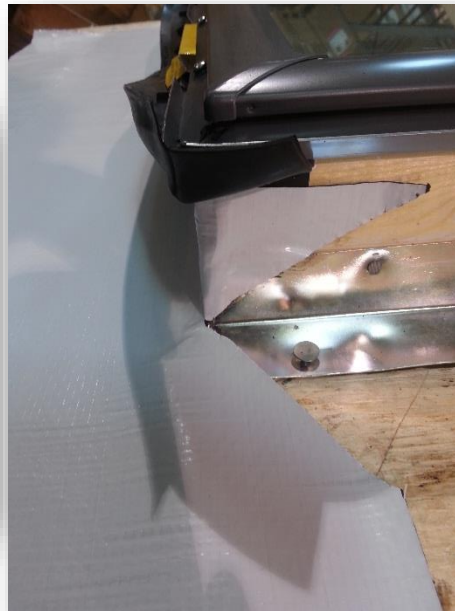


Deck Mount Inspection Photo Guidelines





- ▶ 1- Skylight on roof deck with shingles removed



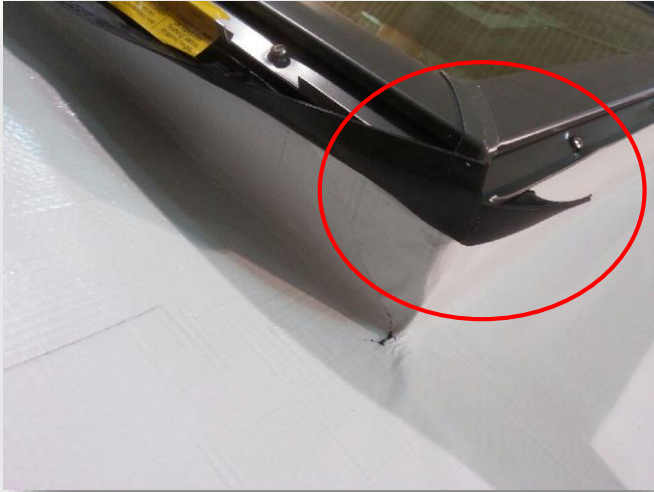
- ▶ 2- Ice & water shield cut on 45 degree angles



- ▶ 3- Ice & water shield on roof deck prior to overlap on shingle (minimum 3 shingles below)



- ▶ 4- All four sides must be wrapped with ice & water shield prior to shingles and step flashing



- ▶ 5- UF gasket should be on the outer part of the ice & water shield
- ▶ Note: UF gasket is on FS skylights only, see installation instructions for other gasket positioning (if applicable) when installing different models



- ▶ 6- Install shingles to the bottom of skylights



- ▶ 7- Install bottom pan and position UF gasket as in step 5

**Note- no nails should be exposed once installation is complete*



- ▶ 8- Step flashing must be interweaved between each shingle

**Note- 3 ½ " overlap minimum between step flashing*



- ▶ 9- Position of last step flashing before top pan is applied
(see EDL instructions for correct nail position in step flashing)



- ▶ 10- Make sure step flashing does not poke a hole in ice & water shield. Recommended to cut on a slight angle



- ▶ 11- Secure cladding to top pan with folded tab



- ▶ 12- Tap down lip on top of head flashing pan



- ▶ 13- Apply strip of ice & water shield over top pan to extend coverage on top of pan



- ▶ 14- Starter shingle applied (if needed)



- ▶ 15- 2"-4" space between top shingle and pan



- ▶ 16- COMPLETE! NO LEAK
**Note- pan can be hidden with dummy shingle if needed*