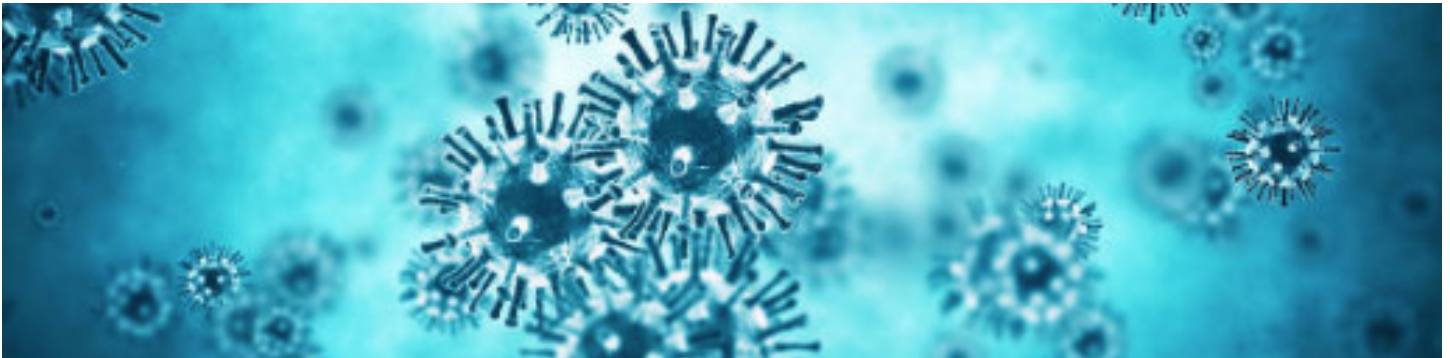


Airborne Contaminant Control



Indoor Air Quality is a growing concern in the workplace. Today more than ever, we are concerned about contamination in our environment.

What causes indoor air quality concerns?

- Indoor environment issues: inadequate temperature, excess humidity, poor air circulation, and ventilation system issues
- Indoor air contaminants: chemicals, dusts, molds or fungi, bacteria, gases, vapours, and odours
- Insufficient outdoor air intake

What are common contaminants?

- Airborne pathogens, tobacco smoke, perfume, body odors from building occupants.
- Dust, fiberglass, asbestos, gases, including formaldehyde from building materials.
- Toxic vapors, volatile organic compounds (VOCs) from workplace cleansers, solvents, pesticides, disinfectants, glues.
- Gases, vapours, odours, off-gas emissions from furniture, carpets, and paints.
- Dust mites from carpets, fabric, foam chair cushions.
- Microbial contaminants, fungi, molds, bacteria from damp areas, stagnant water and condensate pans.
- Ozone from photocopiers, electric motors, electrostatic air cleaners.

There are many effective measures available to improve air quality. Removal of the source, where possible, should always be the first action taken. Once the offending material has been removed, the air can be cleaned using air scrubbers. Where necessary, containment can also be set up to keep contaminants from spreading.

HEPA Air Filtration

HEPA air filtration will remove 99.97% of any airborne particulate that is .3 microns or larger. HEPA air scrubbers work by forcing air through a filtration system, trapping harmful particulates. Sizing of these units will depend on the cubic footage of the space and the desired number of air changes per hour.

DEFENDAIR® HEPA 500 AIR SCRUBBER

- HEPA filter efficiency-rated 99.97% against 0.3-micron oily aerosol particles
- Daisy chain capability
- Variable CFM on each unit up to 1500 CFM per 15-Amp circuit



Item	Description
A20377	Dri-Eaz F284 DefendAir HEPA 500 Air Scrubber/Negative Air Machine

SYCLONE SENTRY X4 HEPA AIR SCRUBBER

High-efficiency air filtration in a highly portable unit, designed with advanced 2-stage filtration technology. Daisy-chain capable, and you can link up to five units on one power outlet. Stackable, lightweight and easily transportable.



Item	Description
1672-7671	Syclone HEPA 400 CFM Air Scrubber/Negative Air Machine

SYCLONE

SYCLONE MK4 HEPA AIR SCRUBBER

- Powerful 2HP motor
- Durable rotational molded housing
- 2 speed operation
- 8 point motor/cage mounting prevents motor and cage shifting
- Positive lock filter prevents filter movement
- Uses standard 24" x 24" H.E.P.A. filters
- 3-stage filtration for maximum efficiency
- Vertical slide door for easy access to filters



Item	Description
1688-1841	Syclone MK4 HEPA Air Scrubber/Negative Air Machine

Containment

In an environment under construction or renovation, there is a greater risk of poor air quality. As aging infrastructure requires repair or renovation, this often needs to be addressed without business interruption. Keeping the work area contained is key to protecting air quality in the rest of the space.

Portable containment solutions, temporary barrier systems and pressure monitoring equipment are some of the tools available to provide containment of work areas.



KONTROL KUBE

Portable containment is most effective for small, short-term projects in different areas of an occupied building. As an example, most health care facilities require portable containment for any regular maintenance; anything from changing a light bulb, to work that requires access to the drop ceiling. This is critical to protect air quality for patients or visitors, especially those that may be immune compromised and susceptible to infection from airborne contaminants. These are useful in all buildings where regular maintenance is conducted in an occupied space.



ADVANCED KONTROL KUBE 6552-K

Equipped with all necessary components. Easily moved by one-person while completely setup. Configurable for small and larger containment needs.

- Increase worker productivity
- Reduce labor costs
- Improve patient outcomes
- Simplify ICRA process



Item	Description
57813	Fiberlock 6552-K Containment System

TEMPORARY BARRIER SYSTEMS

Temporary barrier systems are another common form of containment. Air-tight barriers built with poly sheeting allow for size and shape customization for the specific project.

ZIPWALL

DUST SHIELD BARRIER SYSTEM

Set up a dust barrier in minutes without tape, ladders or damage. Includes zippers to easily make an entryway in the barrier. Includes four 12' spring-loaded poles with two standard zippers and one carry bag.



Item	Description
1653-2677	Dust Shield Barrier System, 4 Spring-loaded Poles, 12

1ST poly

CLEAR POLY SHEETING

Nonporous polyethylene sheeting provides dust and vapor barrier in lead, mold, asbestos abatement, remediation and restoration applications.

- Poly Material
- 6 Mil Strength Poly Sheeting
- Measures 20' x 100'



Item	Description
56060	Clear Poly Sheeting, 20' x 100', 6 Mil, Flame Retardant

RAPTOR GRIP YELLOW POLY TAPE

Provides a high-tack adhesive for a strong bond to most surfaces in a wide range of temperatures. Ideally suited for bonding to polyethylene sheeting and films.

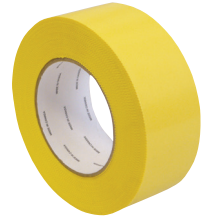
- Leaves little to no residue when removed from most surfaces
- Conforms well to uneven areas
- Features easy-tear edges
- Curl resistant.



Item	Description
1663-4899	Raptor Grip Poly Tape, Yellow, 48mm x 55m (24/case)

SCAPA POLYETHYLENE TAPE

- Polyethylene film, low-residue adhesive
- Bonds well over a wide temperature range



Item	Description
A62880	Scapa Yellow PE Tape, 48mm x 55m (24 rl/cs)

X-GUARD SAFETY PRODUCTS

X-GUARD FIRE RESISTANT RIDGID PANELS

Made of polymers and polypropylene, this corrugated material is widely recognized and used in the health care construction industry across the country. Perfect for floor-, wall-, counter-top protection and temporary door and window replacement.

- Fire, impact, and water resistant
- Lightweight
- Cost effective
- 100% recyclable
- Strong & durable
- Hygenic
- Reusable
- Easy to convert

Applications include: Healthcare, Restoration, Abatement, Construction, Drywall, Painting, Tuck Pointing, Hard Containment, Long-term Use, Temporary Use.

Item	Description
1656-6111	White Fire Resistant Panels, 48" x 96" x 4mm



In both of these containment scenarios, the same HEPA Equipment above is used to provide negative pressure to the work space to contain airborne contaminants and prevent them from spreading to occupied areas. Pressure monitoring is used to ensure the containment remains under constant negative pressure.

CELLULAR DIFFERENTIAL RECORDER

Designed to be the most reliable long-term monitoring recorder in the field. Offers compact design, ease of use and durability that will last from job to job.

The clear choice for monitoring and documenting vacuum and pressure in a containment area. Utilizes state of the art pressure measurement technology to accurately monitor pressure inside a containment area



Item	Description
1643-7624	Cellular Differential Pressure Recorder

AramSCO can also procure additional items, including surge products: temporary beds, mobile containment and temporary shelters; as well as hazmat disposal, first aid kits, and other related supplies.

Financing may be available through Aztec Financial for equipment orders above \$2,500. Equipment purchased within the last 30 days may also be eligible for financing.

Contact your Account Manager for more information on product availability or financing.