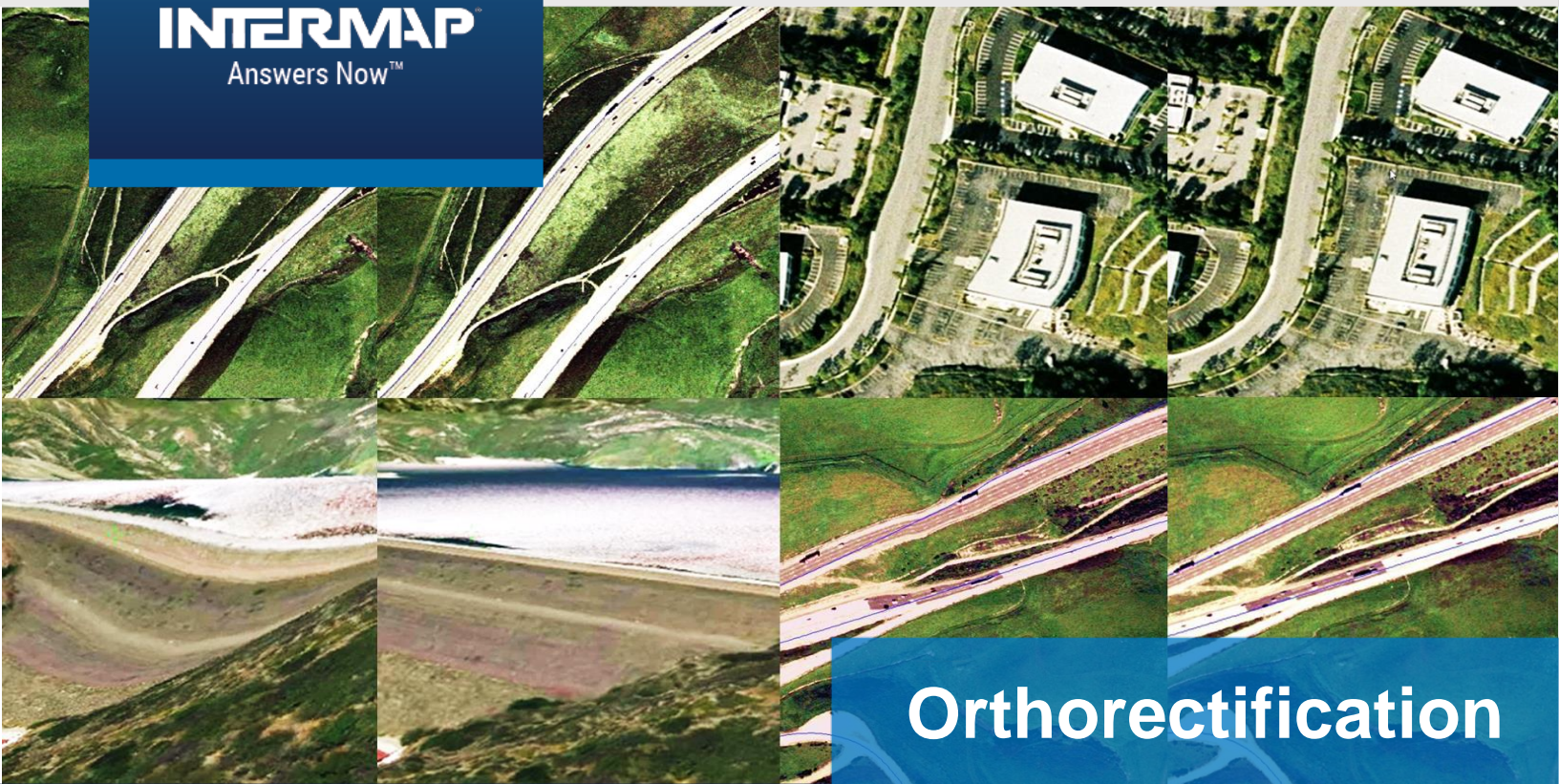


INTERMAP
Answers Now™



Orthorectification

Effortless Satellite Imagery Geometric Correction

Analysis Ready Data

Intermap's orthorectification service is an accurate and reliable cloud-based orthorectification technology that transforms satellite imagery into analysis ready data. Based on highly accurate NEXTMap One™ elevation models with global coverage, our service geometrically corrects distortions in satellite imagery that are caused by topographical variations, sensor system parameters, and viewing perspective. Furthermore, customers will get accurate and consistent geolocation regardless of image source, allowing imagery from multiple vendors or collection times to be corrected and integrated.

Key Benefits & Features



Accurate

Uses Intermap's NEXTMap One™ elevation models to achieve accuracy better than 2 meter RMSE



Fast and Reliable

Runs on modern computing platforms to orthorectify in less than 30 minutes, regardless of image size and quantity



Cost Effective

Low-cost service without the need for specialized software, elevation data, and personnel



Secure

Runs on secure computing platform, your data will be removed from the system once the process is complete



Simple

Upload imagery through web application or automatically through API and let us do the rest of the work



Scale

Our computing platform scales to meet your processing power needs, no matter how large your project is

Built on NEXTMap One™

Intermap's orthorectification of imagery is based on our unique and highly accurate NEXTMap One™ elevation model. This high-accuracy DEM is essential for producing exceptional results with the highest geometric accuracy.

Accuracy

Intermap's orthorectification service achieves accuracy of 2 meter RMSE or better. Since the rectified imagery is free from geometric errors, it enables you to focus on using the product in all levels of your mapping project including accurate feature collection.

For Everyone

Individuals, small businesses, and large enterprises will benefit from workflow integration using our API or web application.



Specifications

| | | | |
|--------------------------|--|----------------------------|---|
| Supported Sensors | GeoEye IKONOS Pleiades Quickbird RadarSat Sentinel-1 Spot-5 Spot-6 Spot-7 TerraSAR-X WorldView-1 WorldView-2 WorldView-3 All sensors with RPC | Supported Imageries | Radar RGB NIR Multispectral Panchromatic Pansharpened |
| | | Accuracy | 1 meter RMSE or better on NEXTMap One™ regional coverage and 2 meter RMSE or better for the rest of the world |
| | | Integration | Web application API |
| | | Correction | Topographical variation Viewing perspective Sensor system parameters |

Accuracy is calculated against using LiDAR as base elevation model.
NEXTMap One™ Regional covers United States, Western Europe, and parts of Southeast Asia.

INTERMAP

Answers Now™

Visit www.intermap.com
or call +1 (303) 708-0955
for more information.

Intermap Technologies® is an industry leader serving a diverse geospatial marketplace. We provide highly accurate geospatial information to help commercial enterprises and government agencies make better location-based decisions.

Copyright 2018. Intermap Technologies®.
All Rights Reserved.

INTERMAP.COM

NEXTMap® Orthorectification Service is available now.
Contact Intermap today for a demo!