



The Normerica chalet features a long deck to enjoy the view.
OPPOSITE: Knots in the pine beams and ceiling are drawn out by the dark window frames and stone fireplace in the great room. Metal is featured in accents like light fixtures, tables and a firewood rack.



APRÈS *play*

STORY **ANNE TAIT**
 PHOTOGRAPHY **SANDY MACKAY**
 STYLING **SARA MARTIN**

A 12-year-old post-and-beam home tucked into a tranquil forest gets a renovation.

Continued on page 108

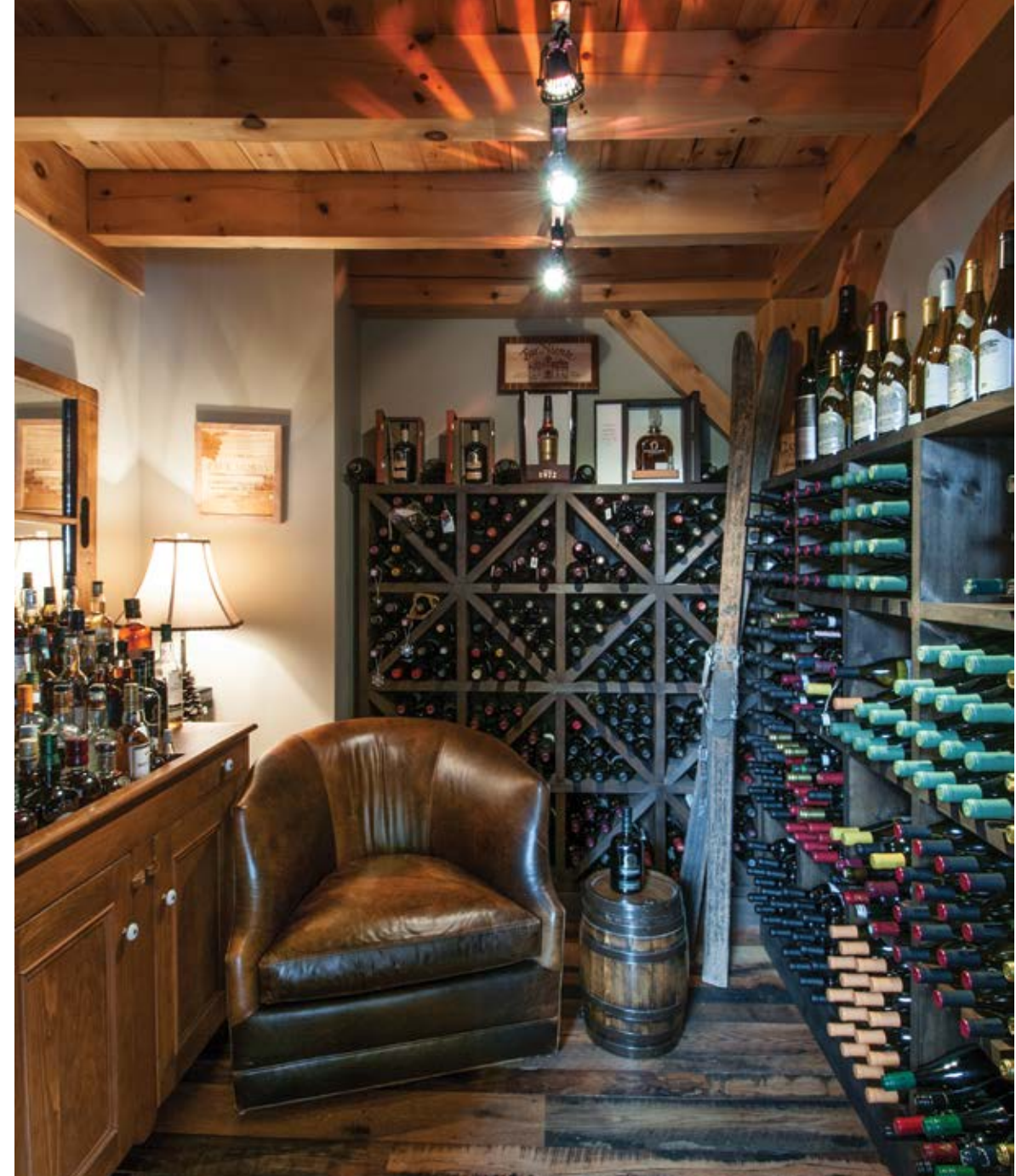


When the property with views of both the mountain and the bay came on the market three years ago, owners Kathryn and Mark knew it was the one. “We had been looking for another home for a few years and loved this neighbourhood, but hadn’t noticed this secluded property. Knowing that our good friends would be our neighbours, we felt right at home from day one,” says Kathryn.

The couple have been travelling to Craigeith from Toronto for more than 20 years, and owned a chalet a few blocks away. Avid outdoor lovers, they embraced the all-season lifestyle, skiing at Craigeith Ski Club, golfing at Georgian Bay Golf Club, and boating on Georgian Bay. Part of a large, extended family, the couple love to entertain, and saw their new home as the perfect venue. It just needed an update.

Before tackling major renovations, the homeowners turned to **Marina Farrow** and **Katherine Arcaro** of **Farrow Arcaro Design (F.A.D.)**, known to them through Craigeith Ski Club, to bring together the design elements. “They were terrific,” says Kathryn. “They came to us as a team, bringing different perspectives and different strengths. They kept us in mind when travelling, and emailed images of items we might like.”

Meeting with the designers, Kathryn was quick to share their vision: “Modern chalet chic. A home – not a cottage. The comfort of a cosy chalet, but with elegance and some contemporary pieces. We wanted a space to comfortably entertain family and friends après ski or golf, but at the same time be very liveable for us.” *Continued on page 112*



LEFT: A wine and scotch-tasting room was fashioned out of the former kitchen pantry. **BOTTOM LEFT:** Homeowners Mark and Kathryn share a glass of wine with designers Katherine Arcaro and Marina Farrow. **RIGHT:** Mark relaxes in the tasting room. **OPPOSITE, FAR LEFT:** An arched window in the great room brings in the mountain views. **TOP:** Grape harvest barrels are used to display birch branches and come complete with original leather straps worn by Italian harvesters. **MIDDLE:** Nature is alive inside with a moss-covered side table. **BOTTOM:** Extra seating tucks away under the coffee table.



Slipcovered parsons chairs unify the dining room with the kitchen seating. **OPPOSITE:** White Italian tiles on the backsplash brighten the kitchen, while an enlarged dark island encourages casual meals.



A large, airy chandelier in the master bedroom is a focal point. The master suite walks out to the deck with access to a hot tub, enjoyed by the owners après play.



The F.A.D. design team went to work to create the magic, using **Blake Farrow Project Management Inc.** for the construction. “The home had a lot of pine and we knew we had to neutralize and break up the wood,” recalls Arcaro, “but we left the original knotty pine beams and important structures.” Doors, window frames, trim, stairs and banisters were toned down using Benjamin Moore paint colours (a rich espresso being a favourite) from **Robinson’s Paint & Wallpaper**.

The original flooring was replaced with 400-year-old, wide-plank, reclaimed, white oak. A decision to insert square pegs in each board proved labour intensive, but, “it was so worth it,” insists Mark. “The floor became the real anchor for design elements to follow, the canvas for everything else,” adds Kathryn.

A new space for entertaining was added off the kitchen: a pantry transformed into a tasting room. The space now houses the family’s wine collection as well as an impressive selection of fine scotch and whisky. Blake Farrow Project Management designed the wine rack system, and with F.A.D.’s help, the room took shape. An evolving project, the room will eventually be climate controlled. *Continued on page 114*



We'll Move Mountains For You!

Mountain MOVING AND STORAGE LTD.

BBB Canadian Association of Movers

Packing, Moving & Storage
 Call toll free **1-800-737-9912**
www.mountainmoving.ca

DISCOVERING NEW TRENDS REINVENTING THE CLASSICS

Design & Colour Consultations
 Space Planning
 Slipcovers & Custom Bedding
 Window Coverings
 Custom Upholstery
 Concept Development

Visit Our Showroom

54 King Street East, Thornbury | 226-665-5550
www.HABITATINTERIORS.ca
 info@habitatinteriors.ca

BUY DIRECT FROM THE SAWMILL!

- ALL DECKING MATERIALS
- BOARD & BATTEN ■ POST & BEAM
- WHITE PINE FLOORING ■ T&G SIDING

High Quality: White Pine, Red Pine, Cedar, Hemlock
 1" Boards - 2" Dimension; 4" and 6" Squares

CALL FOR QUOTE

MOGGIE VALLEY TIMBER INC.

RR#1 Holland Centre, ON
 519-794-0018
www.moggievalleytimber.com
 Mon - Thurs - 7:30am to 5:30pm
 Friday - 7:30am to 12:30pm

PORTER SKELTON & ASSOCIATES LTD

SINCE 1987

The quality design-build solution trusted by homeowners for over 25 years. Positive relationships, creative designs and clear process with every project.

DESIGN~BUILD~RENOVATE~RESTORE

Office-Shop: 14 Stewart Road, Collingwood
 705-444-1999 Info@porterskelton.com



RIGHT: A guest room is warm with silhouette bedside lamps and a nailhead-trimmed ottoman. **BELOW:** A wine barrel finds new life as a sink in the powder room.



F.A.D.'s work was inspired by the homeowners' love of skiing and the outdoors. "We wanted to touch on a ski theme, but not make it a main focus," says Arcaro. All furnishings, including custom crowd-pleasing sectional pieces and upholstered chairs, were sourced by F.A.D. and acquired through Lee Industries. The Rumford stone fireplace was updated with a reclaimed wood beam mantel.

In the reconfigured kitchen space, the existing light maple cabinets and quartz counter remain, but new hardware gives it a more rustic feel. An Italian-tile backsplash, Caesarstone quartz and grey granite accents bring sophisticated warmth to the room. The enlarged island with reclaimed wood siding,

new granite top and comfortable seating quickly became "the place everyone loves to hang out at and socialize," says Kathryn. A multi-level deck off the kitchen offers private outdoor living and views of Georgian Bay.

"Lighting is very important to me," says Kathryn, who understood the impact of light to illuminate and enhance. "It sets the mood and ambience in each room," she says. Unique light fixtures can be found throughout the home, each carefully chosen. The homeowners were delighted when F.A.D. presented two large chandeliers that worked perfectly with the vaulted ceiling. "They are the grand statement that we wanted to make in the main room," says Kathryn. *Continued on page 116*

A "MARK" OF EXCELLENCE

Be part of a winning team...A.M. Contracting.

A.M. CONTRACTING
MARK BROWN

Specializing in
CUSTOM HOMES • ADDITIONS
RENOVATIONS • PROPERTY MANAGEMENT
CELL 519.373.9577 HOME 519.538.3372
www.amcontractingmeaford.com

Can we retire at 55?

FINANCIAL STRATEGIES

FundEX INVESTMENTS INC.

LISA WARLL E.P.C.
FINANCIAL ADVISOR

Celebrating *19 years* in the financial services industry.

Our office will create an Estate and Retirement Plan that will offer financial stability during retirement and also ensure protection from a disability or the loss of a loved one.

Retirement Planning can start at any age.

Advice you can trust.
705-445-9125 • 905-491-6847
www.lisawarll.com • info@lisawarll.com
(Mutual funds provided through FundEX Investments Inc.)

Tyme Home
Custom Interiors & Outdoor Patio

Desired • Delivered • Deserved



Quality • Custom • Hand Crafted • Solid Wood
Canadian Made • Mennonite

20 Balsam St. Unit #12,
Collingwood
705-444-8500
Mon-Sat 10-6 Sun 11-4

tymehome.com



The recreation room on the lower level shows off some of the many ways the owners enjoy the region: golfing, snowshoeing, skiing and playing pool.



Contemporary artwork contributes to the sophisticated casualness, introducing pops of colour on the walls. Two acrylic paintings by **Jennifer Woodburn**, a local artist known for her vibrant local landscapes, were acquired from **Loft Gallery Inc.** in Clarksburg. A striking piece by local artist **Sue Tupy**, from the **Matilda Swanson Gallery** in Clarksburg, claims a commanding presence in the dining area. A custom, reclaimed-wood dining table, built for F.A.D., can easily accommodate 14 people, and has been the hub of many dinner parties.

The main-floor powder room has a charm of its own, with unique features sourced by F.A.D., including the wine barrel vanity, seagrass wallpaper and a barn door.

The master bedroom, en suite bathroom, built-ins and dressing room are on the main floor, and were updated with the help of the designers. Sliding doors lead to a secluded deck with outdoor living space, a hot tub and an outdoor shower designed and built by **Parklawn Landscaping**. "The main floor is where we live when it's just us," explains Kathryn.

What is next? Kathryn and Mark will tackle more landscaping this coming spring. In the meantime, they plan to enjoy their chic chalet every chance they get. **OH**



Timberwind

RUSTIC INTERIORS

796466 GREY ROAD 19,
BLUE MOUNTAINS, ON, L9Y 0N6
705.441.2727

METAL CABINET COMPANY



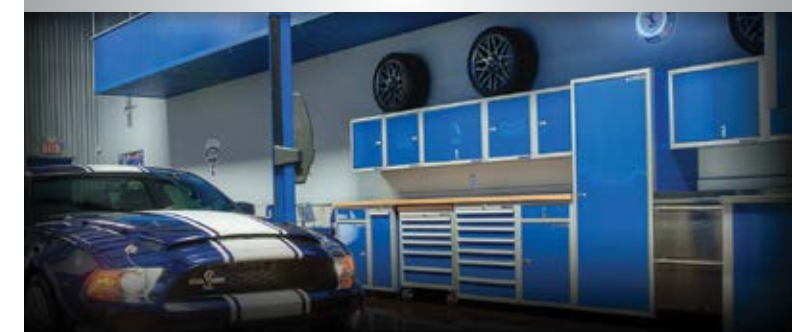
CUSTOM OUTDOOR KITCHEN & LUXURY CARTS



INDOOR OUTDOOR BAR/ENTERTAINMENT SYSTEMS



STAINLESS STEEL OUTDOOR KITCHEN CABINETS



CUSTOM ALUMINUM GARAGE CABINETS

Jeff Gillmor

Distribution & Manufacturing

jeffgillmor@gmail.com

705.888.0451

