

Process BI

The only Pre-packaged, Gold Standard Dashboard for Winshuttle

The Challenge

The more Winshuttle is leveraged to automate processes the more pressure is placed on application owners and Lean officers to continually improve them and drive more value. Reporting can be arduous and there is no easy way to understand total cycle times, where end user training is needed and where bottlenecks exist. Specifically:

- Using SharePoint lists, Excel, and task updates are practically impossible to view, measure, understand and act upon
- Standard reporting is stale
- Custom BI Dashboard development is time consuming and cumbersome
- Licensing BI tools is challenging, complicated by corporate standards and other delays from pricing per viewer, on premise and full editor
- As new processes are automated, your team starts from scratch on custom reporting and dashboards

The CPS Solution

Process BI. This pre-configured, turnkey, device-agnostic dashboard is the most used Winshuttle BI add-on. Install in less than an hour and instantly see real-time, drill down process and task KPIs. Eliminate reporting, wasted time and custom solutions. Scalable to solution specific metrics and can bridge ERP, PLM and CRM data.

Key Benefits

- Eliminates the need for custom BI, complicated licensing and code for Winshuttle form and workflow solutions
- Plug-n-play configured, licensed, fully supported. Automatically presents new Composer solution data
- Scalable to process specific widgets rapidly
- Data can be leveraged by existing BI platforms; for example, Tableau and Microsoft Power BI in less than 8 hours of support time
- Presents active and archived data
- Real Time Dashboards with drill down KPIs at the process, task and end user levels. Allows for ad hoc selection of data based on filters
- Responsive UI for viewing on any device

Ways to Get Started

- Contact CPS to schedule installation, about 1 hour.
- Starter Pack of 3 tokens can server up to 30 different people.
- Each Process BI token is \$40 per month based on annual subscription. Tokens can be added in groups of 10.

“Our plan is to focus on making our Winshuttle data consumable and clearly intend to partner and work with Process BI.”

- Kevin Goulet, VP Product Management at Winshuttle, stated in the Process BI YouTube webinar, 6/5/2017

Process BI | The only Pre-packaged, Gold Standard Dashboard for Winshuttle

Extendable. Can be extended with an easy to use self-service packaging to SAP BO Lumira, Power BI, Tableau, Qlik but also BW HANA, SharePoint and extended ERP, PLM, SCM and CRM systems without costly data warehousing or configuration.

Out-of-the-box. Connected to Winshuttle process information, with pre-configured visualizations.

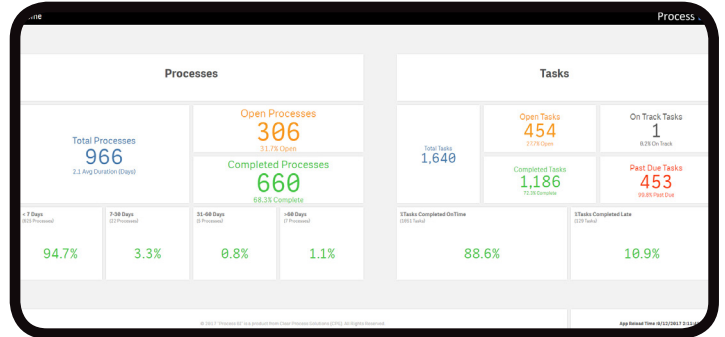
Customizable and configurable by anyone.

Scalable. More processes running? Automatically presented. Want solution specific information? No problem, build a widget for any data in the Winshuttle solution.

“Measure it and you can improve it. With Process BI you have a simple tool that allows you to make sense of it.”

- Rick Hawk, Global Director Business Process, Kichler Lighting

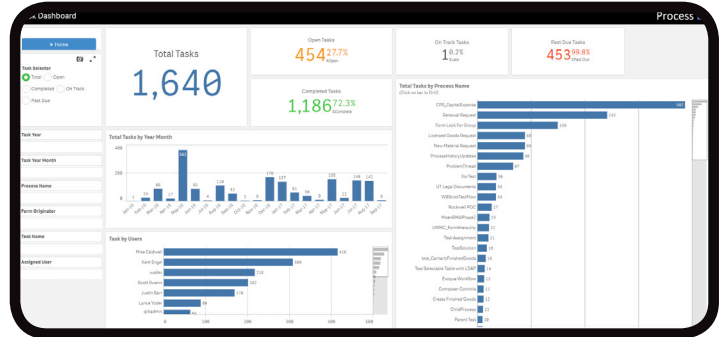
Process BI Home Dashboard



Processes Dashboard



Tasks Dashboard



Process BI The Gold Standard in Out-of-the-Box BI for Winshuttle Foundation

- Supported through CPS SolutionCARE for tips, configuration changes and extension to other BI environments.
- Process BI Starter Pack FREE trial with new SolutionCARE contracts.

About Clear Process Solutions

Clear Process Solutions (CPS) is the premier global services / implementation partner for Winshuttle with expertise in Winshuttle Foundation. A turnkey provider of Winshuttle packaging, licensing, training, services and support, CPS specializes in process results. Our team has deep experience in both SAP and Winshuttle toolsets. CPS implements both mass data automation and mobility enabled webform and workflow which integrates with SAP and extends across other ERP, PLM, and CRM systems.