

VANTAGE CAPTIVE

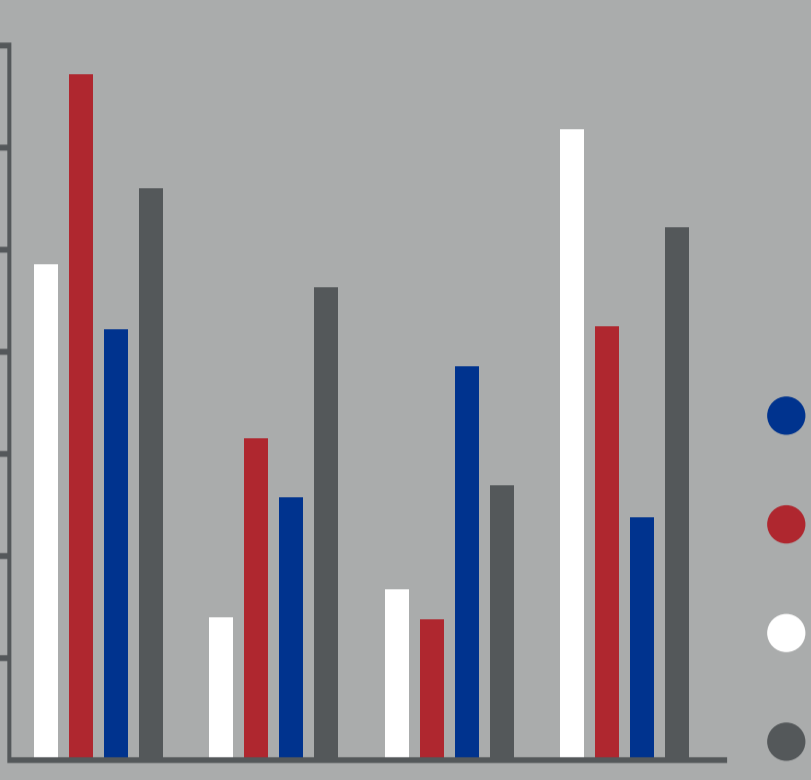


VANTAGE IS A HETEROGENEOUS MULTI-LINE CAPTIVE EXCLUSIVE TO PMA AGENTS AND BROKERS

IT ENABLES MEMBERS TO ASSUME RISK

&

SHARE UNDERWRITING AND INVESTMENT INCOME PROFITS



DOMICILED IN VERMONT

Vantage lines include:

- Workers' Compensation
- Automotive
- General Liability



PMA'S 25+ YEARS OF ALTERNATIVE MARKET EXPERIENCE MAKES ENTRY EASY WITH:

- A flexible risk sharing approach
- Reduced capital requirements
- Minimal upfront costs



WHY VANTAGE?

QUOTA SHARE REPLACES A/B FUND APPROACH



LOWER FEES



PMA IS THE CARRIER



LIMITED UPSWING



CLAIMS MANAGED BY PMA MANAGEMENT CORP



CONTACT YOUR AGENT, BROKER, OR PMA REPRESENTATIVE FOR MORE INFORMATION
[HTTPS://WWW.PMACOMPANIES.COM/BUSINESS-INSURANCE/CAPTIVES-AND-GROUPS](https://www.pmacompanies.com/business-insurance/captives-and-groups)