



Build school readiness and strengthen families with parent-group classes.

Measurable outcomes delivered through a scalable, ready-to-launch community program.

LENA Start is an evidence-based community program designed to engage families and help them learn how to increase conversation with their children during the first few years of life.

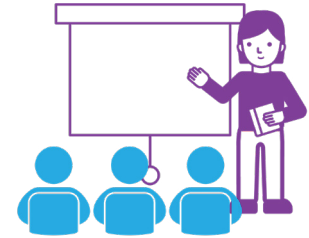
Interactive talk — specifically back-and-forth conversation — has been proven to be a key factor in healthy early brain development. Yet most families don't know how much they're talking to or with their children.

During LENA Start, families use LENA's patented "talk pedometer" technology to measure their child's language environment. At each class session, they explore this data in the form of personalized, actionable feedback reports, discussing research-based strategies with their peers to increase the quality and quantity of talk at home. All LENA Start sessions can be delivered virtually or in person.

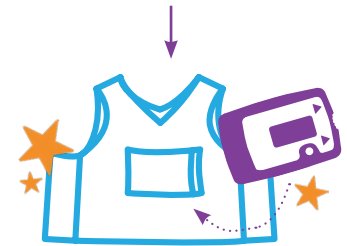
Thousands of families have attended LENA Start, and the results are clear: children who participate gain language skills twice as fast their peers during the three-month program and maintain these gains afterwards, showing advanced literacy skills upon entering pre-K.

Parents who graduate from LENA Start report feeling more connected to their children and their communities, and make measurable increases in how much they talk, read, and interact with their children.

“LENA's ability to make parent-child interactions visible and quantifiable resonated with us. We love that the numbers are coupled with social connection and empathy that data alone can't offer.”
— Carly Roberts, Program Officer, Early Impact at Overdeck Family Foundation



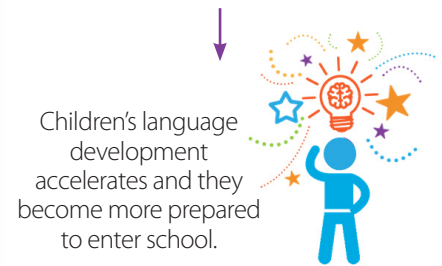
Families attend LENA Start sessions weekly for 10 weeks. All session content is available in Spanish and English.



After each session, families use LENA's "talk pedometer" to measure their child's language environment.



Through data feedback and coaching, families increase back-and-forth conversations with their children.



Children's language development accelerates and they become more prepared to enter school.

LENA Start is implemented through trusted community partners such as school districts, hospitals, libraries, and local employers. **Visit LENA.org/LENA-Start to see how you can strengthen families in your community using LENA Start.**

LENA.org/LENA-Start



For more information, contact:

LENA | 361 Centennial Parkway | Suite 100 | Louisville, CO 80027
303-441-9085 | info@lena.org | www.LENA.org