

# bimstore.co.uk

.....

Contour Casings  
Contour Radiator Guard  
User Guide

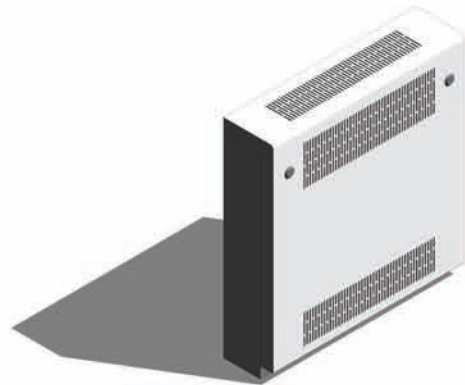
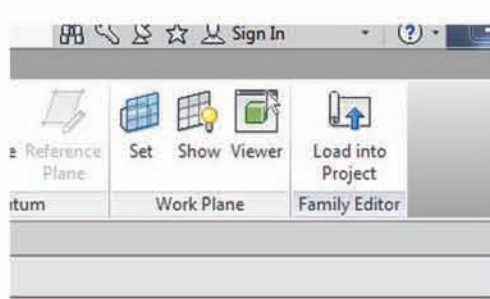


Version 1.0 | Revit 2013  
June 2013

## Loading the Contour Radiator Guards into your project

The Contour Radiator Guard components are modelled as generic casework families that can simply be loaded in to your project. This can be done using the following method:

1. Open the revit family containing your 'project', and navigate to a floor plan view.
2. Now open the Contour Radiator Guard component that you have just downloaded from bimstore (Classic, Deepclean or Deepclean Anti-Ligature). Use the Revit ribbon at the top of the window to navigate to the family editor and click 'Load into Project'.

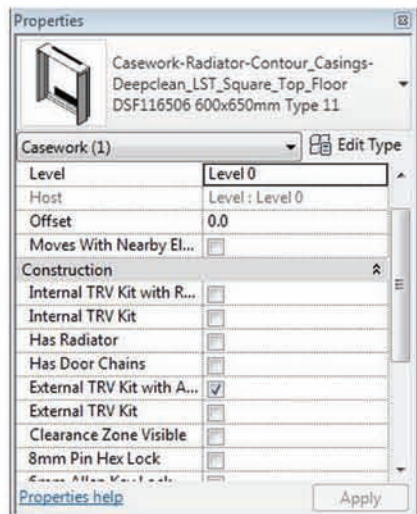


3. The component can now be placed in your project and can also be selected from the 'components' drop down on the main revit ribbon. Note if you have downloaded a wall mounted casing you will require a wall to position the radiator guard.

## Using the Contour Radiator Guard Additional Features

The Contour Radiator Guard components have additional features built-in to assist the user when specifying and placing the BIM component, these include manufacturer approved clearance zones and the options for a generic radiator, door chains, lock choices and TRV options. To use these additional features please follow the steps below:

1. With the component loaded and positioned in your project, select the radiator guard. Once selected the 'Properties' dialogue box should appear on the left hand of the screen (as illustrated below).



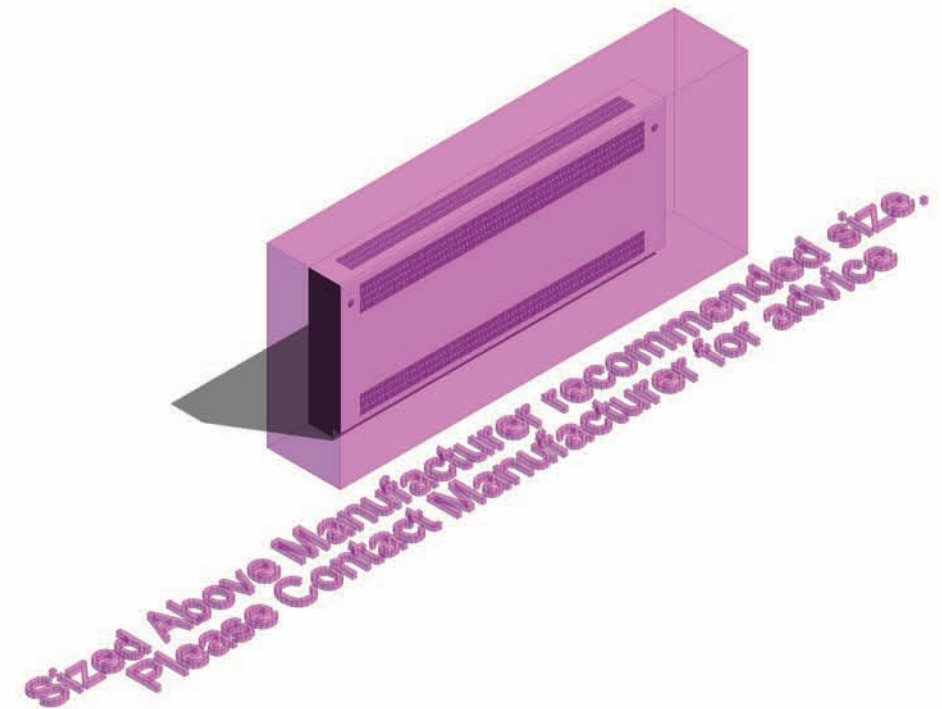
2. Scroll down the 'Properties' dialogue box until you reach the heading 'Construction'. In this box you will have tick boxes for multiple options.

Construction	
Internal TRV Kit with Remote Sensor	<input type="checkbox"/>
Internal TRV Kit	<input type="checkbox"/>
Has Radiator	<input type="checkbox"/>
Has Door Chains	<input type="checkbox"/>
External TRV Kit with Anti-Ligature Shroud	<input checked="" type="checkbox"/>
External TRV Kit	<input type="checkbox"/>
Clearance Zone Visible	<input type="checkbox"/>
8mm Pin Hex Lock	<input type="checkbox"/>
6mm Allen Key Lock	<input type="checkbox"/>

3. Tick the selected option and choose Apply to activate the clearance zone, TVR and lock options. Note lock options and radiators are merely for scheduling purposes.

The Contour Radiator Guards have been built with adjustable dimensions for the length and height of the guard. To adjust these simply click the radiator guard in your project and in the properties dialogue box adjust the dimensions for the 'Casing Length' and 'Casing Height'. Click apply and the radiator guard will adjust its overall dimensions. You can also view the guard in a plan or elevation view and use the pull handles to adjust the overall dimensions.

The Radiator guards have been built with maximum size requirements built in so that when exceeded an error message will appear to advise the user to contact the manufacturer for advice.



## Other Notes

You can add the Contour Radiator Guard components to your company template file, they will then be available without loading when starting a new project.

## Revisions

Version 1.0 - First Issue

**bimstore.co.uk**  
content, sorted

North East  
Spaceworks  
Benton Park Road  
Newcastle upon Tyne  
NE7 7LX

T. +44 (0)191 223 6600  
F. +44 (0)191 223 6610