

bimstore.co.uk

.....

Contour Casings
Contour Pipe Boxing
User Guide

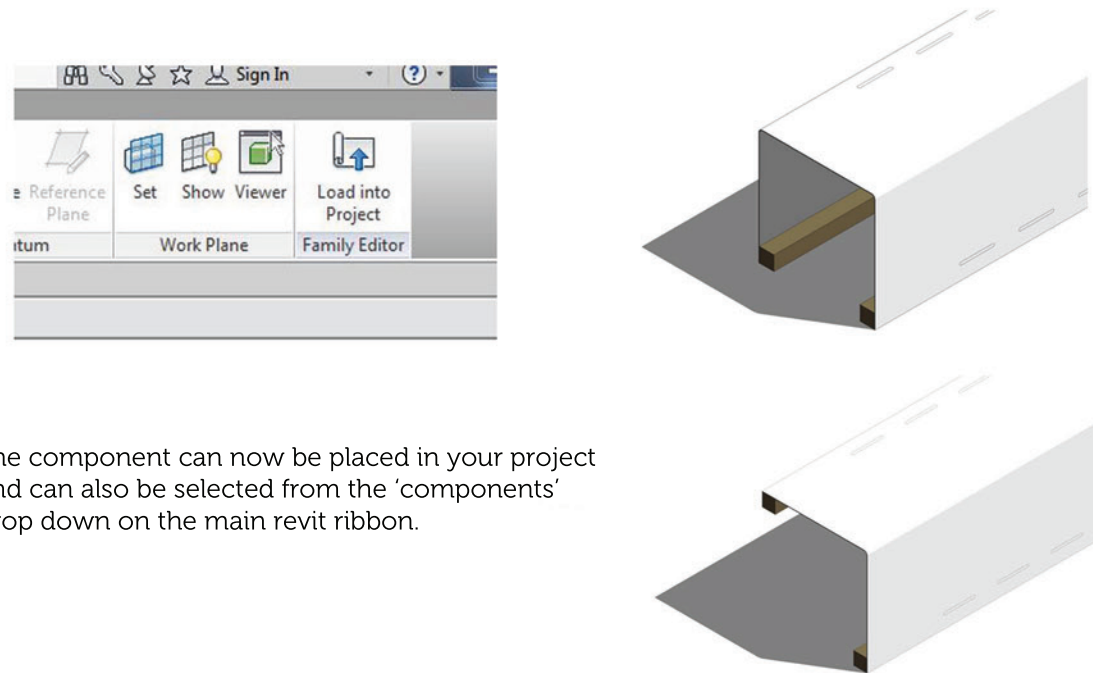


Version 1.0 | Revit 2013
Mar 2013

Loading the Contour Pipe Boxing System into your project

The Contour Pipe Boxing System components are modelled as generic model families that can simply be loaded in to your project. This can be done using the following method:

1. Open the revit family containing your 'project', and navigate to a floor plan view.
2. Now open the Contour Pipe Boxing component that you have just downloaded from bimstore (either straight, corner or T-junction). Use the revit ribbon at the top of the window to navigate to the family editor and click 'Load into Project'.



3. The component can now be placed in your project and can also be selected from the 'components' drop down on the main revit ribbon.

Please note Contour Ply pipe boxing can only be supplied with Contour LST radiators or radiator guards

Positioning the Contour Pipe Boxing System

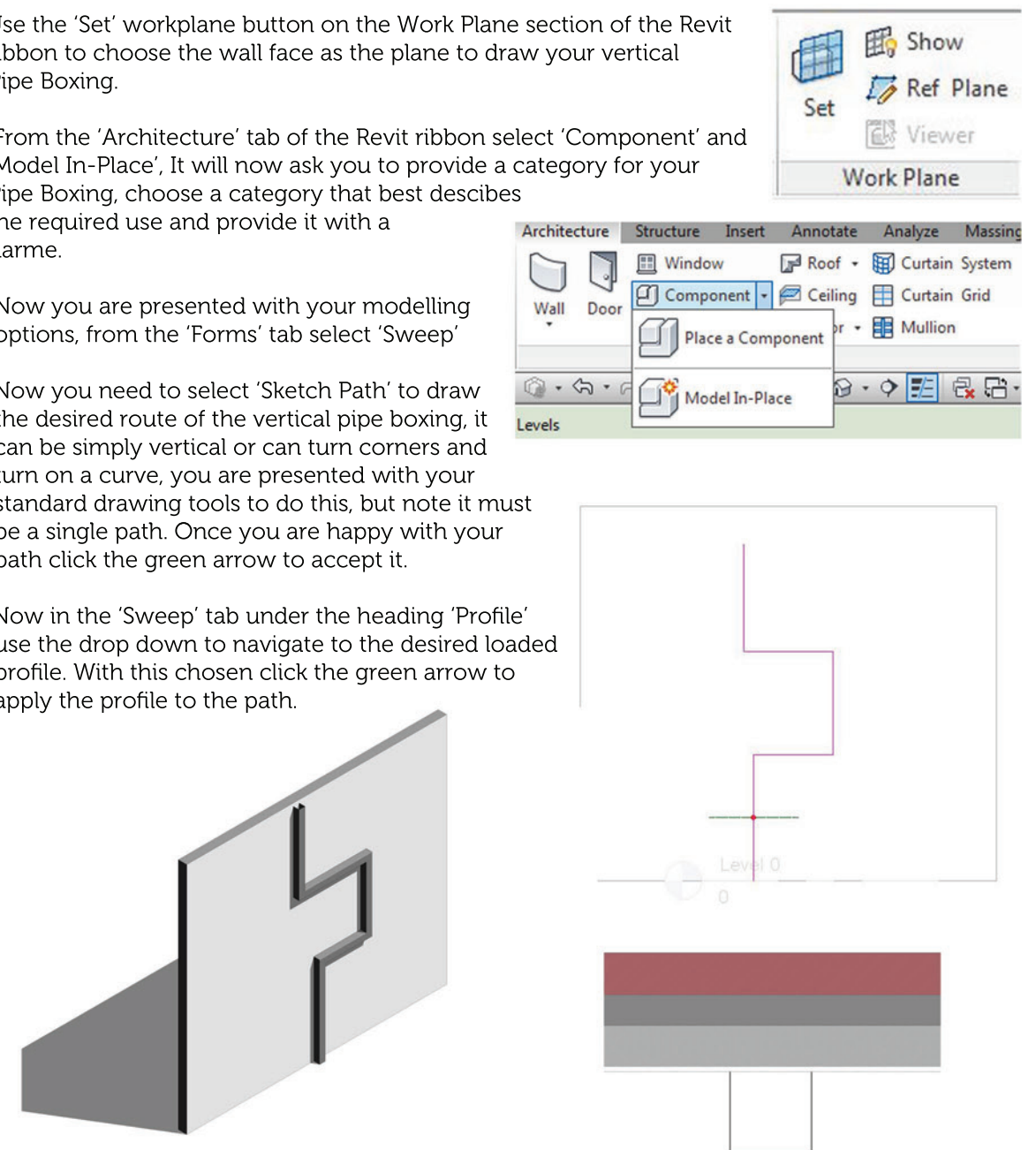
The Contour Pipe Boxing System components has been pre-loaded with 3 standard types available these include Metal Pipe Boxing, Ply Pipe Boxing (Commercial) and Ply Pipe Boxing (Domestic). When loaded into your project the pipe boxing can be correctly positioned using the following method;

1. Select 'component' from the main revit ribbon, in the properties bar on the left hand side of the screen you will now be able to select your pipe boxing type from the drop down menu, for example metal or ply etc
2. With the component selected, navigate to a floor plan view and as you hover the pipe boxing will appear. Click to drop the pipe boxing into your model. Use the 'Align' tool on the modify section of the Revit ribbon to align the pipe boxing to another element for example a wall face or edge, it can then be locked using the padlock.

Note the Floor Ducting direction can also be ammended by rotating the component, using the flip arrow controls or hitting the space bar with the component selected.

The Pipe boxing download also includes a profile component of both the 'L' and Channel section pipe boxings. These can be used to create vertical pipe boxings where required and can be done using the following method:

1. Open the Contour Pipe Boxing Profile component that you have just downloaded from bimstore (either 'L' or Channel Section). Use the revit ribbon at the top of the window to navigate to the family editor and click 'Load into Project'.
2. In you model navigate to an elevation view where you wish to draw the path the Pipe boxing is to follow.
3. Use the 'Set' workplane button on the Work Plane section of the Revit ribbon to choose the wall face as the plane to draw your vertical Pipe Boxing.
4. From the 'Architecture' tab of the Revit ribbon select 'Component' and 'Model In-Place', It will now ask you to provide a category for your Pipe Boxing, choose a category that best describes the required use and provide it with a name.
5. Now you are presented with your modelling options, from the 'Forms' tab select 'Sweep'.
6. Now you need to select 'Sketch Path' to draw the desired route of the vertical pipe boxing, it can be simply vertical or can turn corners and turn on a curve, you are presented with your standard drawing tools to do this, but note it must be a single path. Once you are happy with your path click the green arrow to accept it.
7. Now in the 'Sweep' tab under the heading 'Profile' use the drop down to navigate to the desired loaded profile. With this chosen click the green arrow to apply the profile to the path.



Using the Contour Pipe Boxing System Additional Features

The Contour Pipe Boxing System components have additional features built-in to assist the user when specifying and placing the BIM component, these include Stop Ends, Ventilation Slots, adjustable length and BioCote antimicrobial coating. These additional features can be adjusted using the following steps below:

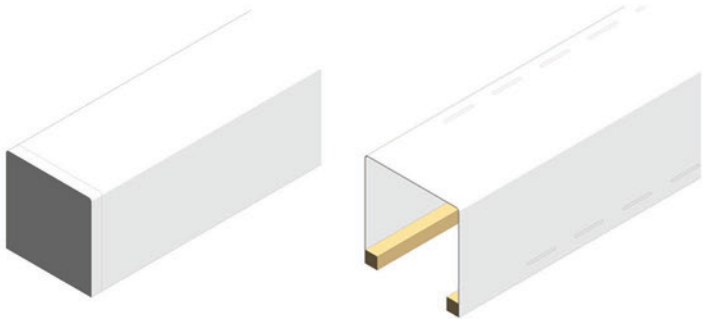
1. With the component loaded and positioned in your project, select the pipe boxing. Once selected the 'Properties' dialogue box should appear on the left hand of the screen.

Using the Contour Pipe Boxing System Additional Features

2. Scroll down the 'Properties' dialogue box until you reach the heading 'Construction' in this box you will have tick boxes for various options as below.

Construction	
Has Venting Slots	<input type="checkbox"/>
Has RHS Stop End	<input type="checkbox"/>
Has LHS Stop End	<input type="checkbox"/>
BioCoate antimicrobial ...	<input type="checkbox"/>

3. Tick the selected option on/off and choose Apply to activate the ventilation slots, stop ends and BioCote antimicrobial coating option (Please note the BioCote option is only available for the Metal Pipe Boxing).



Properties

Casework-Pipe_Boxing-Contour_Casings-Pipe_Boxing_Channel_Section_StraightMetal Pipe Boxing 200x200mm

Generic Models (1) Edit Type

Constraints

Construction

Has Venting Slots☐

Has RHS Stop End☐

Has LHS Stop End☐

BioCoate antimicrobial ...☐

Materials and Finishes

Boxing MaterialContour Casings - PP...

Dimensions

Length3000.0

Boxing Splay5.0

Volume0.002 m³

Identity Data

Phasing

Visibility

Error Box☐

Properties help

Apply

The pipe boxing length, splay and size can also be adjusted using the same 'Properties' dialogue box under the 'Dimensions' heading or from the pull handles visible in a plan or elevation view of the pipe boxing.

To adjust the height or depth of the pipe boxing the user needs to edit the type. This can be done by selecting the 'Edit Type' button at the top right hand corner of the 'Properties' dialogue box.

Dimensions	
Length	3000.0
Boxing Splay	5.0
Volume	0.002 m³

Once the 'Type Properties' box appears use the duplicate button to copy the Pipe Boxing and then adjust the Height and Depth parameters in the 'Dimensions' section to suit your requirements. The components have been pre-built with manufacturer sized maximum restrictions and if these are exceeded an error message will appear as per the illustration below. In this event please contact the manufacturer for advice.



The pipe boxing material can also be adjusted from the same 'Properties' dialogue box under the Materials and Finishes heading as shown below.

Materials and Finishes	
Boxing Material	Contour Casings - PPC Aluminium - RAL 9003

Other Notes

You can add the Contour Pipe Boxing component to your company template file, they will then be available without loading when starting a new project.

Revisions

Version 1.0 - First Issue

bimstore.co.uk
content, sorted

North East
Spaceworks
Benton Park Road
Newcastle upon Tyne
NE7 7LX

T. +44 (0)191 223 6600
F. +44 (0)191 223 6610