

bimstore.co.uk

.....

Contour Casings
LST Radiator User Guide



Version 1.0 | Revit 2013
Jan 2013

Loading the Type Catalogue

The LST Radiator range is available in a large range of sizes. To ensure that all these sizes are covered in the Revit component a type catalogue has been set up to assist the user in selecting only the required sizes they need so as not to unnecessarily increase the model size with hundreds of unnecessary sizes of the LST radiator. The zip file that you have just downloaded from bimstore will contain two important files to allow this type catalogue to work correctly, these are;

- the .rfa file (revit family component)
- the .txt of the same name (contains the type catalogue information)

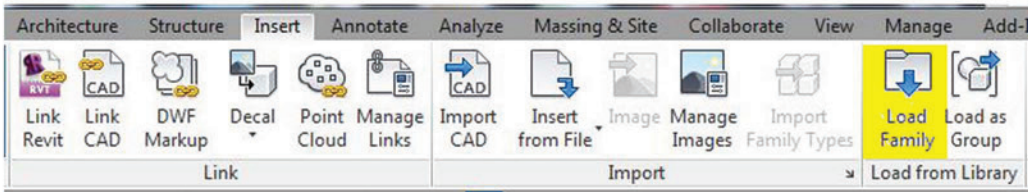
Please ensure that when saving your component on to your system that you save both files to the same location.

Please follow the below method using the type catalogue to load the component into your project.

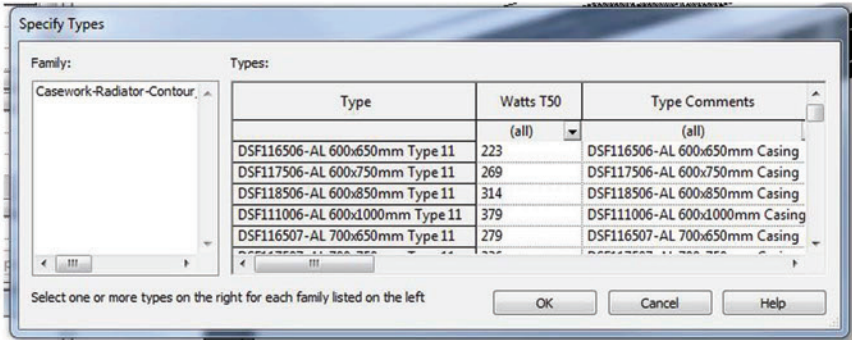
Loading the LST Radiator into your project

The LST Radiator component is modelled as a generic casework family that can simply be loaded in to your project. This can be done using the following method:

1. Open the revit family containing your 'project', and navigate to a floor plan view.
2. Navigate to the 'Insert' tab on the Revit Ribbon and select 'Load Family'



3. Navigate to the location of the saved LST radiator component that you have just downloaded from www.bimstore.co.uk. Note please refer to loading the type catalogue to ensure that you have saved the .txt file to the correct location.
4. The type catalogue selector will now appear (as per the image below) select the desired sizes from the scroll menu, the selection will turn black once picked. To select multiple hold Shift.



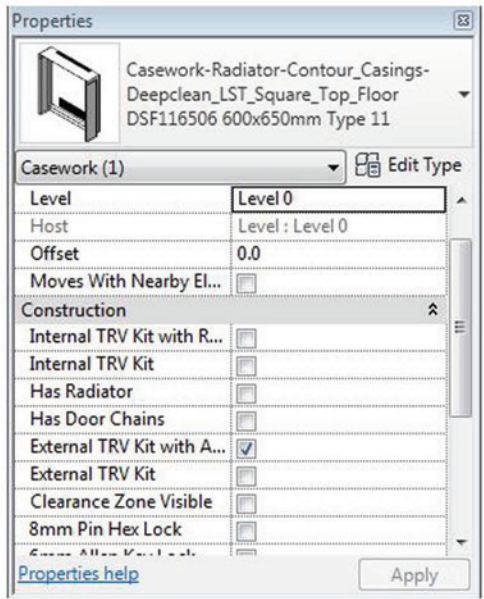
5. Click OK to load these components into your project.

Please note that due to the component calculating parametric arrays in the size types you have selected this may take a little time. It is recommended that you pick 2-3 size types to start with and then repeat the process if required rather than selecting dozens of sizes at once.

Using the LST Radiator Additional Features

The LST Radiator component has additional features built-in to assist the user when specifying and placing the BIM component, these include manufacturer approved clearance zones and the options for a generic radiator, door chains, lock choices and TRV options. To use these additional features please follow the steps below:

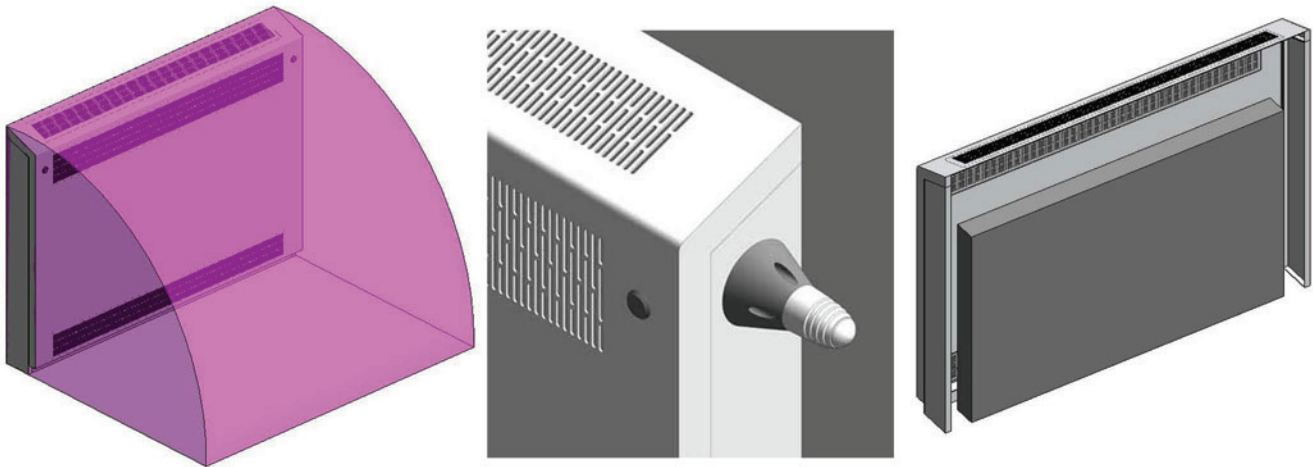
1. With the component loaded and positioned in your project, select the radiator casing. Once selected the 'Properties' dialogue box should appear on the left hand of the screen (as illustrated below).



2. Scroll down the 'Properties' dialogue box until you reach the heading 'Construction'. In this box you will have tick boxes for multiple options.

Construction	
Internal TRV Kit with Remote Sensor	<input type="checkbox"/>
Internal TRV Kit	<input type="checkbox"/>
Has Radiator	<input type="checkbox"/>
Has Door Chains	<input type="checkbox"/>
External TRV Kit with Anti-Ligature Shroud	<input checked="" type="checkbox"/>
External TRV Kit	<input type="checkbox"/>
Clearance Zone Visible	<input type="checkbox"/>
8mm Pin Hex Lock	<input type="checkbox"/>
6mm Allen Key Lock	<input type="checkbox"/>

3. Tick the selected option and choose Apply to activate the clearance zone, radiator, TVR and lock options. Note lock options and radiators are merely for scheduling purposes.



Other Notes

You can add the LST Radiator component to your company template file, they will then be available without loading when starting a new project.

Revisions

Version 1.0 - First Issue

bimstore.co.uk
content, sorted

North East
Spaceworks
Benton Park Road
Newcastle upon Tyne
NE7 7LX

T. +44 (0)191 223 6600
F. +44 (0)191 223 6610