

QUICK START GUIDE

So you've received your new Mobius Trimmer M108, unpacked it, and are ready to go. Great! This Quick Start guide will get you trimming as fast as possible.

STEP 01.



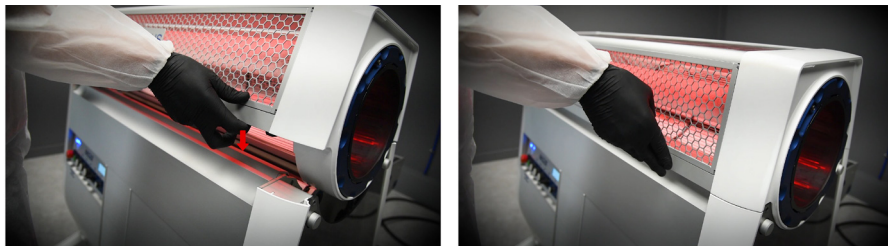
Make sure all 4 casters are in the locked position.

STEP 02.



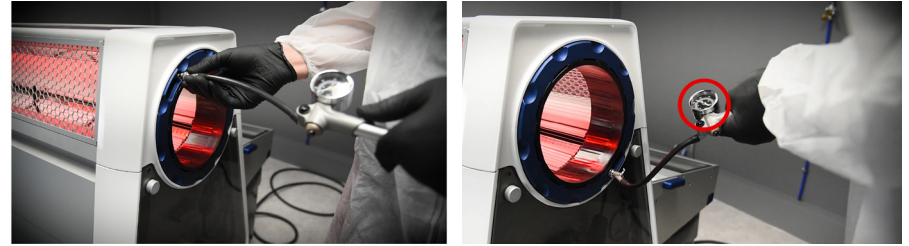
Plug in your M108 and twist the plug to the right.

STEP 03.



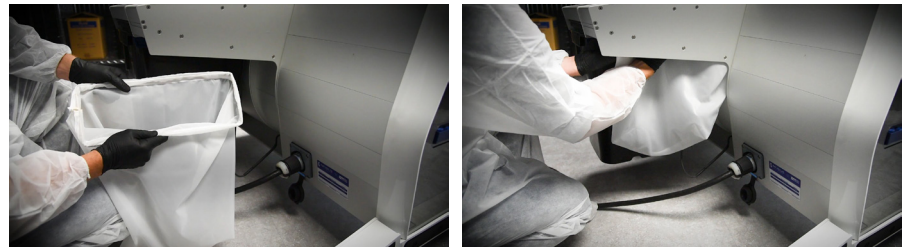
Double check that the lid is latched properly

STEP 04.



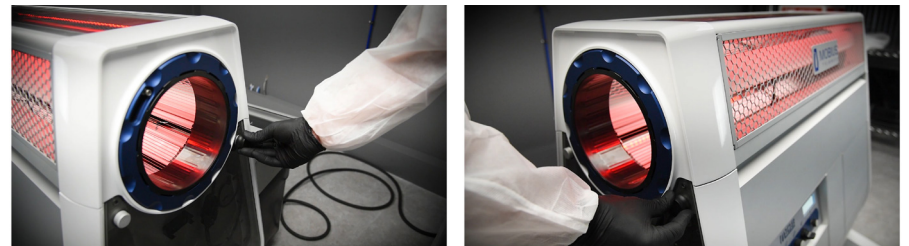
Ensure that the air pressure in the AirThread Tension Tumbler is between 130 - 140 psi.

STEP 05.



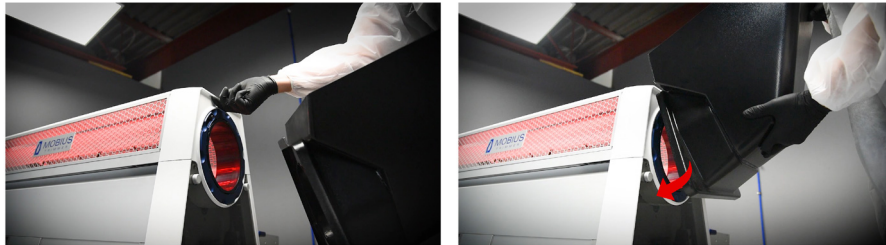
Install the nylon exhaust filter

STEP 06.



If you're going to use conveyors, place your conveyor sensor override pucks on the bumpers. Watch the Conveyor Installation video if necessary.

STEP 07A.



Install your input hopper ...

STEP 07B.



and output chute.

STEP 07C.



When either the pucks or the chute and hopper are installed, the lights on the control panel indicating an error in these areas will turn off.

STEP 08.

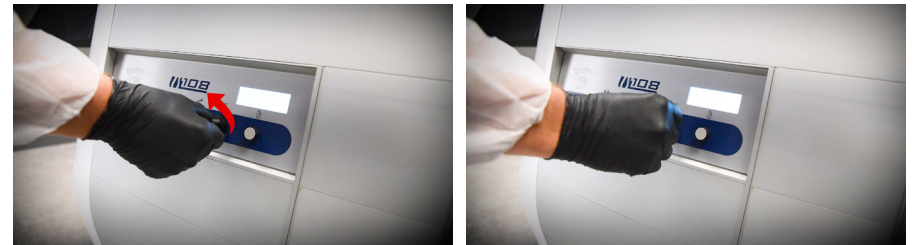


Pull out the emergency stop button and turn right to release.

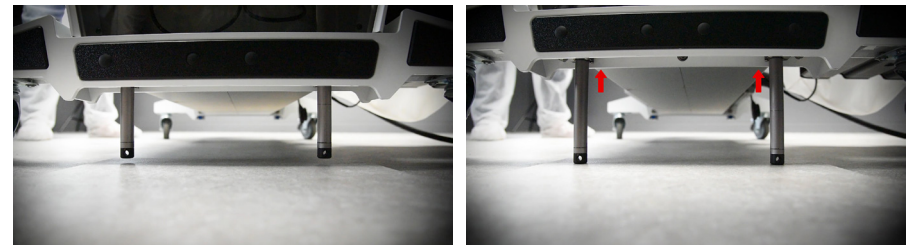


The lights of the M108 will turn from red to blue indicating it's ready to go.

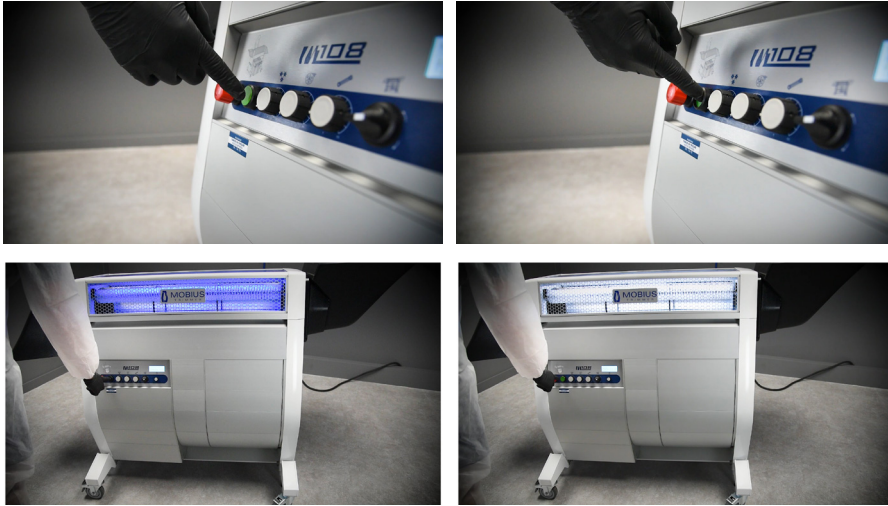
STEP 09.



Adjust Tilt to desired height by turning the dial to the left. The legs will come out of the bottom front of the machine and raise the one side off the floor.



STEP 10.



The lights in the machine will change from blue to white indicating it's ready to go.

STEP 11.



Pull out the blade speed, tumbler speed, and fan speed dials on the Variable Function display. Turn to the desired settings.