

Installing and Activating a Multi-User Network License for Statgraphics 18

| | |
|---|---|
| Step 1: Download and Install Statgraphics 18 | 2 |
| Step 2: Create a Statgraphics Registration Account | 2 |
| Step 3: Register the Network Serial Number..... | 5 |
| Step 4: Install the Statgraphics Network Management Program | 6 |
| Step 5: Create the License Files..... | 6 |
| Step 6: Activate Each Executable | 8 |

The instructions in this document apply to organizations who have purchased a multi-user network license.

To manage a network license, a network administrator should be selected. This person is responsible for managing the installation using the Statgraphics Network Management Program. This includes doing the initial activation of the program as well as checking out and checking in temporary standalone licenses if desired.

When doing the installation and activation, the network administrator should be sure to have available:

1. The 20-character serial number that was received when the license was purchased.
2. The 8-character registration code that was provided with the serial number.

Before proceeding, you should select:

1. A shared directory where the license files will be placed.
2. One or more locations where the executable will be installed. Each executable needs read access to the license files.

Note that the executable runs in the memory space of the client machines. Nothing runs on the machine where the executable and license files are located.

Step 1: Download and Install Statgraphics 18

To use Statgraphics 18, it must first be downloaded by going to www.statgraphics.com/download18. Click on one of the 10 links in the following table found there:

| Primary language | | |
|------------------|--------|--------|
| English | 32-bit | 64-bit |
| French | 32-bit | 64-bit |
| German | 32-bit | 64-bit |
| Italian | 32-bit | 64-bit |
| Spanish | 32-bit | 64-bit |

This will download a standard Windows installation file. The 32-bit version of Statgraphics 18 runs on computers with both 32-bit and 64-bit versions of Windows. The 64-bit version of Statgraphics 18 requires your computer to be using a 64-bit version of Windows.

When the download is complete, use Windows Explorer to locate and run the file that you downloaded. PLEASE BE SURE YOU HAVE ADMINISTRATOR PRIVILEGES WHEN YOU RUN THE INSTALL PROGRAM.

Install the program in a location where all individuals who will use the program have read access. Only the network administrator needs write access to the directory where the program is installed. Note that nothing runs on the server where the files are placed, so it does not have to be a Windows machine.

NOTE: You may install the program in multiple locations provided they share license files which will be placed in a single location by the Network Administration Program.

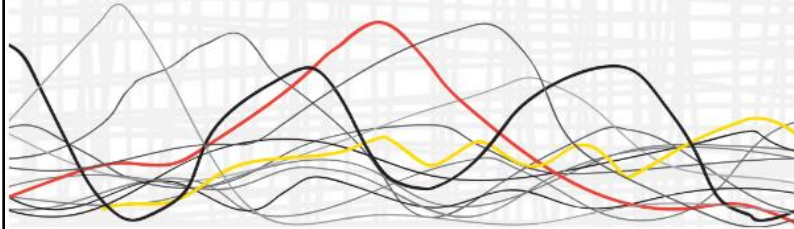
Step 2: Create a Statgraphics Registration Account

Before you can activate the program, you must register the network administrator's email address with Statgraphics. To do so, use a web browser to go to <https://register.statgraphics.com>. This will take you to the following page:



©Copyright 1982-2017 by Statgraphics Technologies, Inc.
This program is protected by U.S. and international copyright laws as described in the About dialog box.

Version 18 Registration Program



TRIAL PERIOD

REGISTERED SERIAL NUMBERS

ACTIVATIONS

ASSOCIATED SITE LICENSES

[Click here to log in using your email address.](#)

FIRST TIME USERS: please [register here](#) before logging in.

Click on “register here” to go to a page where you can set up a registration account:

CREATE A NEW ACCOUNT

Use the form below to create a new account.

Passwords are required to be a minimum of 8 characters in length.

* indicates a required field

Account Information

*Email address:

*Password:

*Confirm password:

Check this box if you are a student.

*First name:

*Last name:

*Job title:

*Organization:

*Address:

Address (line 2):

*Country:

*City:

State:

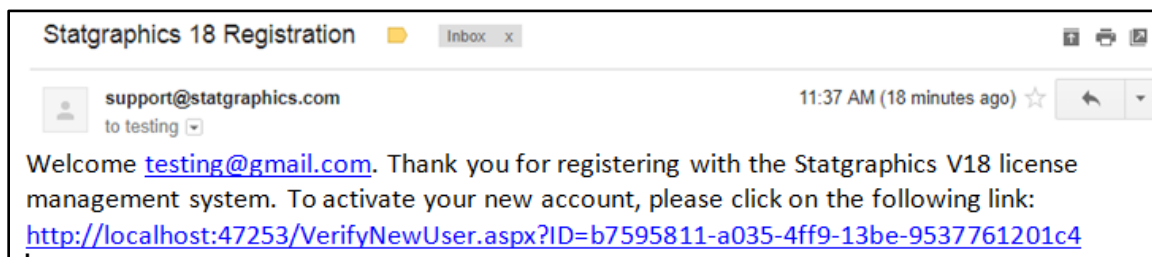
*Postal code:

*Phone number:

Create Account

Cancel

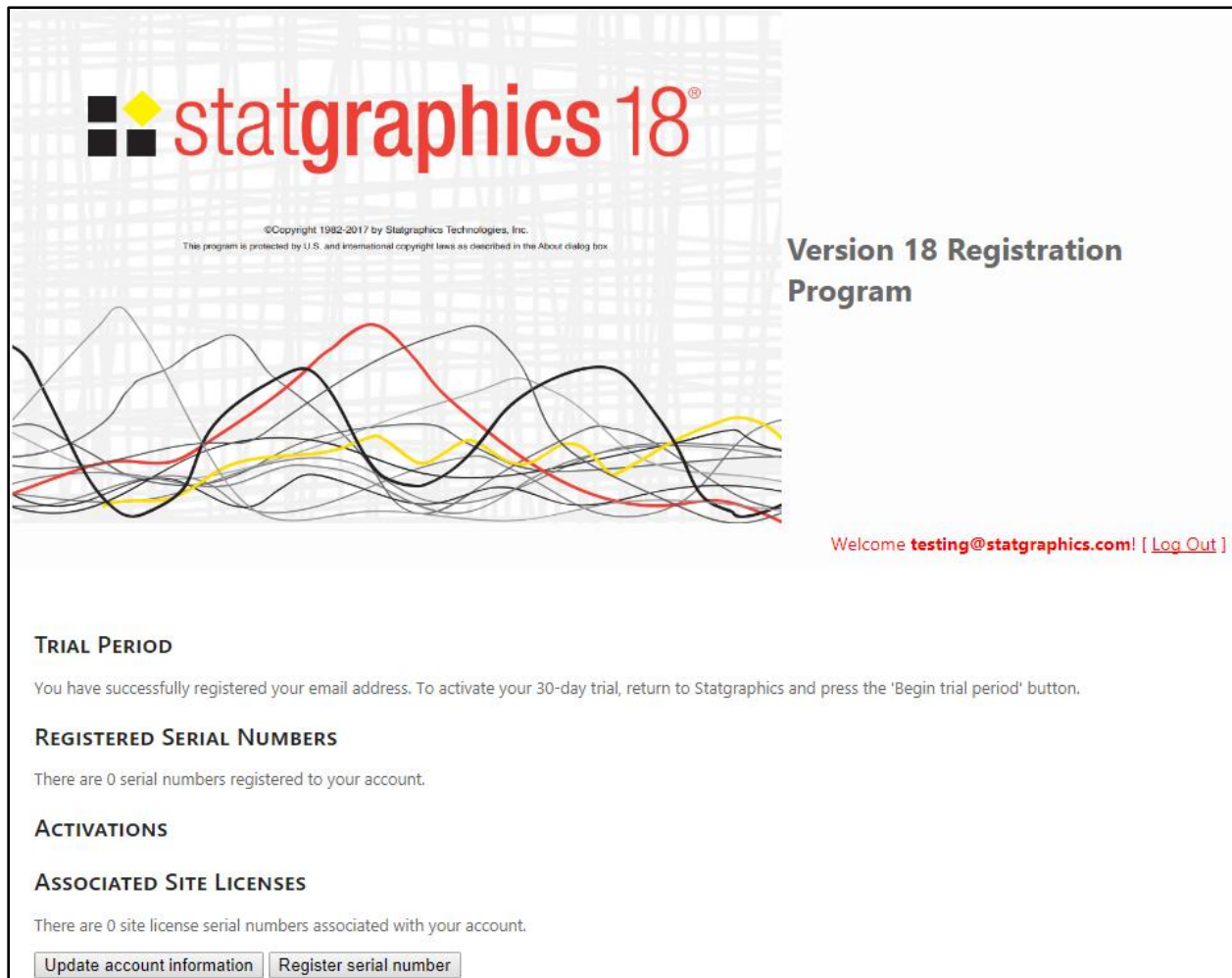
Be sure to enter a valid e-mail address, since after pressing *Create Account* you will need to respond to an e-mail sent to that account to complete the registration process:



Once you respond to that email, your account will be activated.

Step 3: Register the Network Serial Number

Before you can activate your license, you must register your serial number by going to register.statgraphics.com. Log in with the username and password you created in Step 2. This will take you to the following page:



The screenshot shows the 'Version 18 Registration Program' interface. At the top left is the Statgraphics 18 logo, consisting of a 2x2 grid of squares (black, yellow, black, black) followed by the text 'statgraphics 18'. Below the logo is a copyright notice: '©Copyright 1982-2017 by Statgraphics Technologies, Inc. The program is protected by U.S. and international copyright laws as described in the About dialog box'. To the right of the logo, the text 'Version 18 Registration Program' is displayed. Below this, a decorative horizontal band features several overlapping, wavy lines in black, red, and yellow. On the right side of the page, a welcome message reads 'Welcome **testing@statgraphics.com!** [[Log Out](#)]'. The main content area is divided into four sections: 'TRIAL PERIOD' with a message about activating a 30-day trial; 'REGISTERED SERIAL NUMBERS' with a message stating there are 0 serial numbers; 'ACTIVATIONS'; and 'ASSOCIATED SITE LICENSES' with a message stating there are 0 site license serial numbers. At the bottom, there are two buttons: 'Update account information' and 'Register serial number'.

Push the button labeled *Register serial number* which will display the following window:

REGISTER SERIAL NUMBER

Serial Number to Register

Email address:
testing@statgraphics.com

Serial number:
BXXX-XXXX-XXXX-XXXX-XXXX

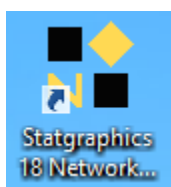
Registration code:
E845B312

Register serial number Done

Enter the serial number you received when you purchased your license and the associated registration code. Then press *Register serial number*. After receiving a confirmation that the serial number was registered, press *Done*. This will return you to the previous page, which will show the serial number that you registered.

Step 4: Install the Statgraphics Network Management Program

The network administrator next needs to download and install the Statgraphics Network Management program. The installation file for this program is located at www.statvision.com/downloads/version18/sgnetinstall.msi. This program should be installed on the network administrator's computer, not on a server. Once installed, a desktop icon will be created similar to that shown below:



Step 5: Create the License Files

To create the license files, the network administrator should launch the Statgraphics Network Management program. The main window will then appear:

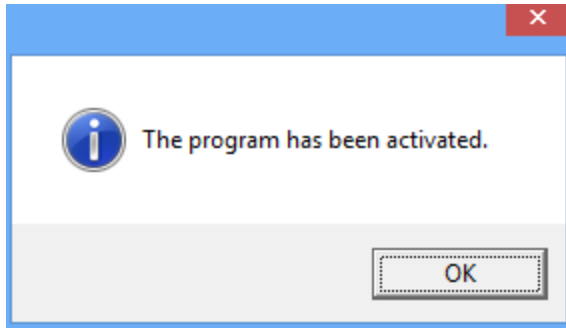
The screenshot shows the 'Statgraphics Network Management Program' window. It contains several input fields and buttons. At the top, there are fields for 'Serial number' and 'Product key'. Below these are fields for 'Organization', 'Administrator e-mail address', and 'License directory' (with a 'Browse' button). The status is 'NOT ACTIVATED', with buttons for 'Activate', 'Deactivate', and 'Upgrade'. There is also a 'Manual activation code (if automatic activation fails):' field with an 'Activate manually' button. At the bottom, there are buttons for 'Check in/check out seat', 'Troubleshoot', and 'Exit'. The 'Activate' button is highlighted.

Enter:

- **Serial number:** the serial number received when the license was purchased.
- **Organization:** name of the organization that purchased the license.
- **Administrator e-mail address:** email address to which the serial number was registered in Step 3 above.
- **License directory:** the directory in which the license files should be placed. All users will need read access to this directory.

Once all fields have been completed, a *Product Key* will appear in the top right portion of the window.

Now press *Activate*. The Statgraphics Network Management Program will contact the Statgraphics registration web service. If the serial number has been registered to the administrator email address and the program has not yet been activated, the following message will appear:



At the same time, several files will be created and added to the license directory:

1. Sgcnet.usr – contains the serial number, email address, activation code, organization, and network management key.
2. Sguser1.log, sguser2.log, etc. – one file for each purchased license seat.
3. Sgcnet.txt – encrypted log file.

These files are used to control access by the client machines. The Statgraphics Network Management program can then be closed.

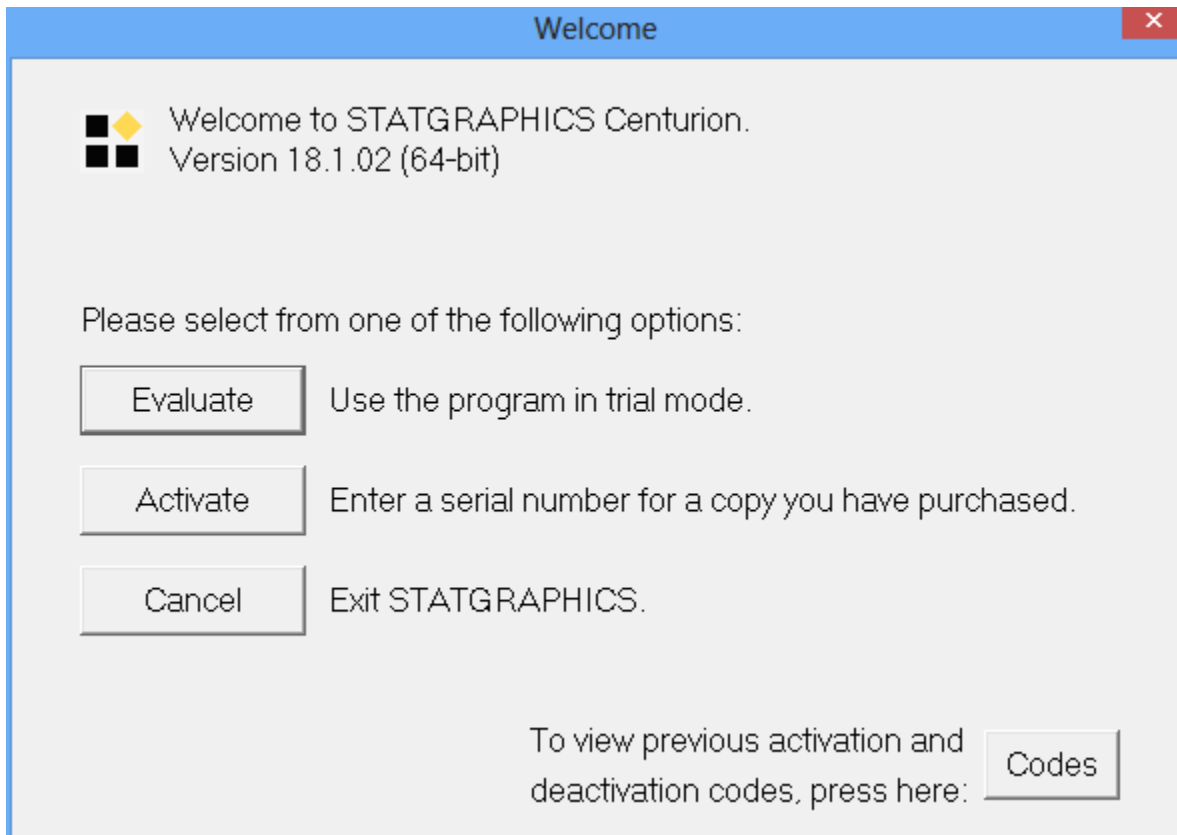
Manual Activation

If the automatic activation process fails, usually because a firewall is preventing you for communicating with the Statgraphics activation web service, you will need to send the serial number, email address, and product key to support@statgraphics.com. We will return to you an activation code which you can enter in the *Manual activation code* field and press the *Activate Manually* button.

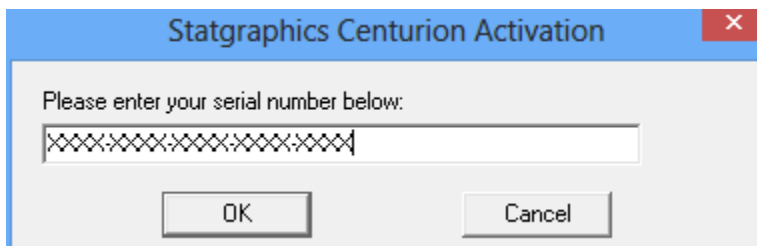
Step 6: Activate Each Executable

Once the license files have been created, the sgwin executables can be activated. This only has to be done once for each location in which the program has been installed.

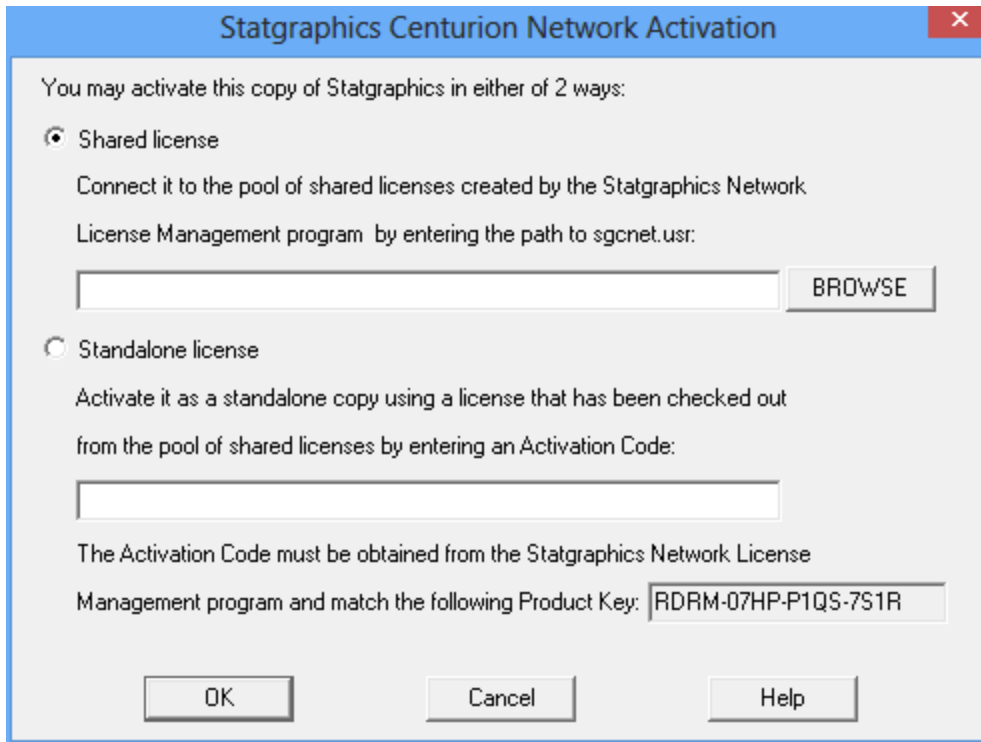
From a client machine (NOT THE SERVER), locate the executable *sgwin.exe*. Launch it with full administrator rights. Often this requires using the right mouse button and selecting “Run as administrator”. The following dialog box will be displayed:



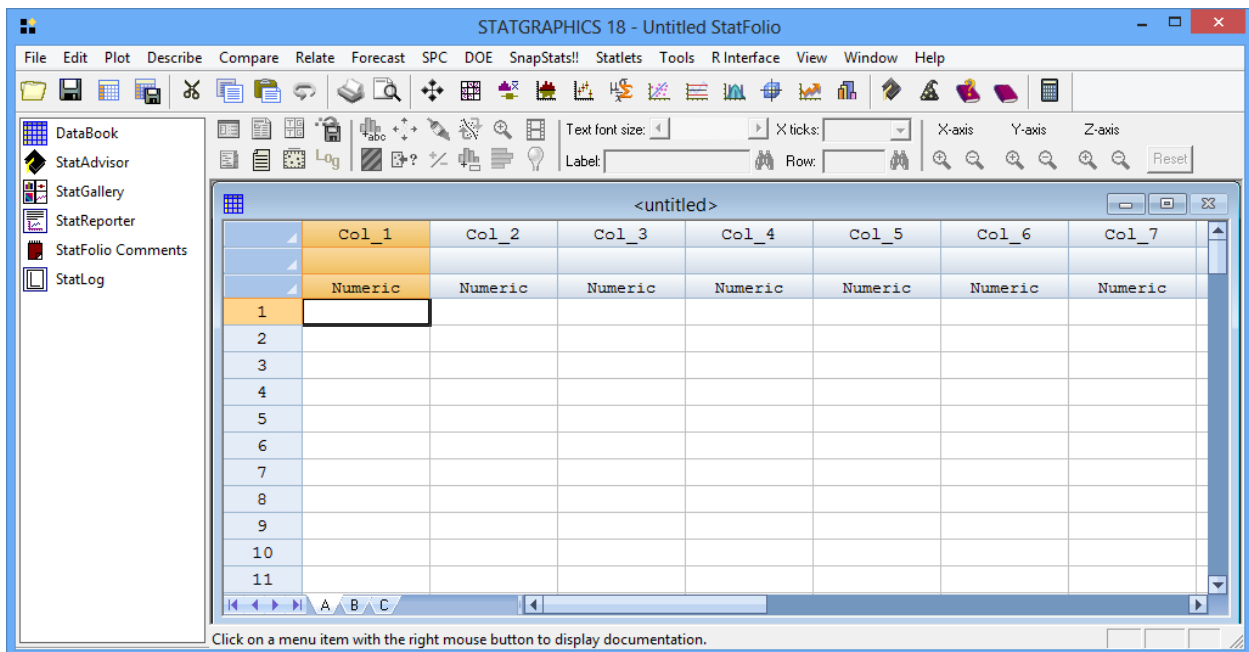
Click on the *Activate* button. This will display a dialog box in which to enter your serial number:



Enter it and press *OK*. This will take you to the *Network Activation* dialog box:



Set the radio button to “Shared license”. Using the *Browse* button, locate the file *sgcnet.usr* in the license directory which was created in Step 5. Then press *OK*. This should launch the program and display the main window:



The executable is now activated and may be launched from multiple client machines.