

# MIXER GRANULATOR BLENDER

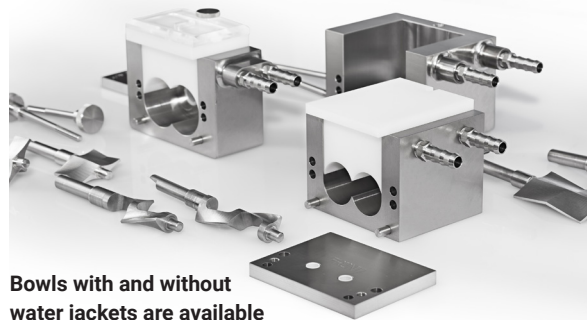


A COMPONENT OF THE  
CALEVA MULTI LAB

## TECHNICAL SPECIFICATIONS

### THE CALEVA MIXER - GRANULATOR - BLENDER

<b>Batches range</b>	Approximately 10 to 50 grams (bulk density dependent)
<b>Design</b>	Robust in operation, "tool-less" in general use and fully interlocked for operator safety
<b>Operating Modes</b>	
<b>General Operation</b>	Provides high shear granulation, blending and mixing for a range of products in small batches
<b>Standard applications</b>	De-lumping and de-agglomeration Mixing and blending of powders High Shear granulation of wet masses Blending of viscous liquids
<b>Options</b>	Standard and high viscosity bowl and blade configurations are available
<b>Torque Limiting Protection</b>	Motor will automatically disengage to prevent damage to the machine at high torque
<b>Standard Configuration</b>	
<b>Base machine size:</b>	450 mm H x 365 mm W x 375 mm D
<b>Weight:</b>	34.2 kg (230 V) or 36.4 kg (110 V) Two configurations are available
<b>Cabinet:</b>	Brushed 304 Stainless Steel
<b>Product Contact Parts:</b>	316 and/or 316 L Stainless Steel, Acetyl and Acrylic Standard blades are 316 Stainless steel. The high viscosity blades are 431-QT900 stainless steel
<b>Power requirement</b>	230 v, 50 hertz, 6.3 amps, or 110 v, 50 hertz, 10 amps, single phase
<b>Bowl volumes* (Empty)</b>	Full size bowl, blades no insert = 275 ml Full size bowl, blades, no insert = 241 ml Half size bowl, blades, no insert = 71 ml Half size bowl, blades and insert = 52 ml Sigma bowl, blades, no insert = 113 ml Sigma bowl, blades and insert = 74 ml * = Not sample size



Bowls with and without water jackets are available



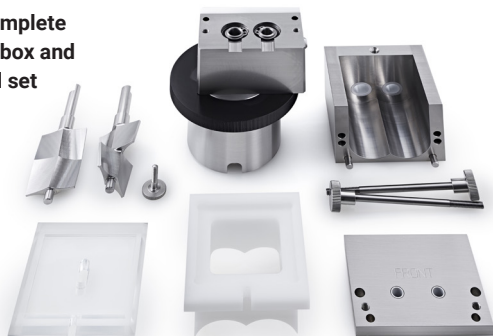
Full sized and reduced size bowls



A variety of bowl, blades and insert configurations are available to suit your application

Blade set designed for highly viscous material

A complete gearbox and bowl set

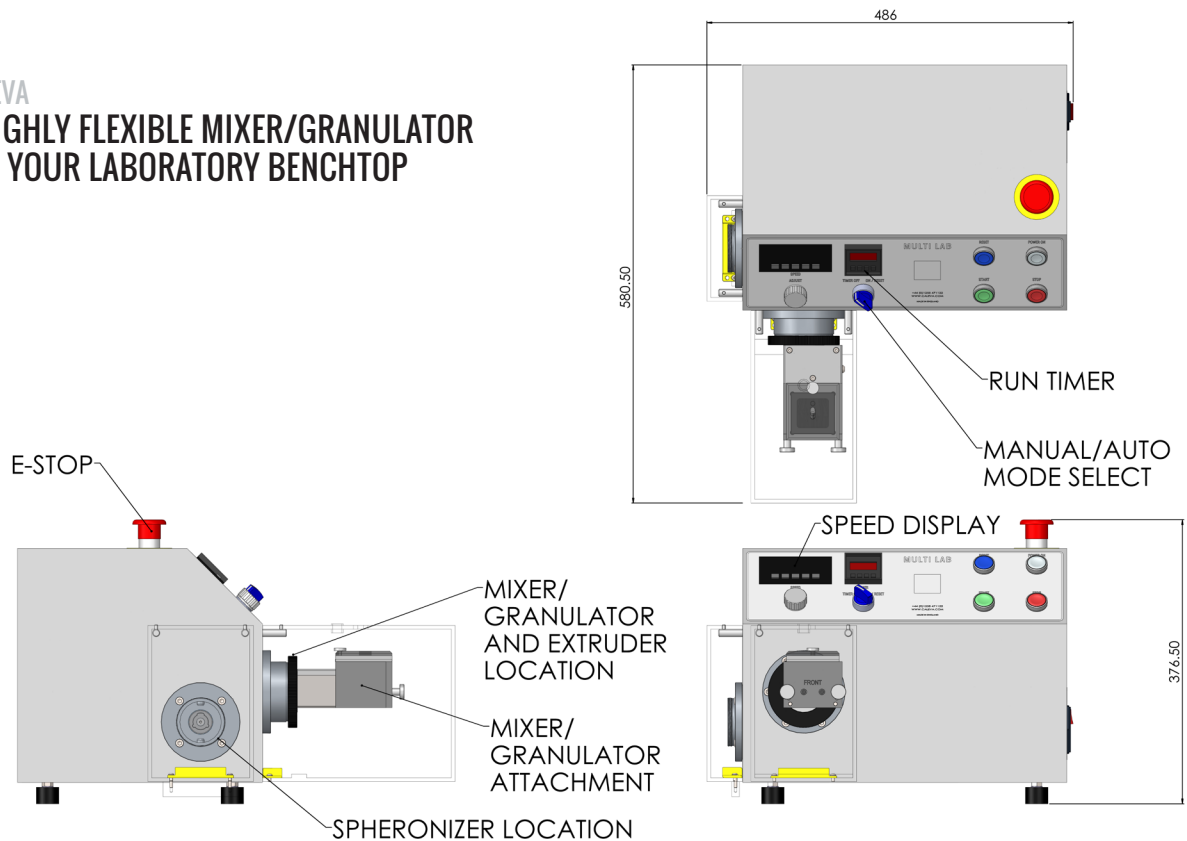


The multi-use and expandable small mixer granulator from Caleva.



CALEVA

A HIGHLY FLEXIBLE MIXER/GRANULATOR  
FOR YOUR LABORATORY BENCHTOP



## TALK TO US

Please call us without obligation

+44 (0) 1258 471122

info@caleva.com



Certificate Number: 1503