

Creator 2

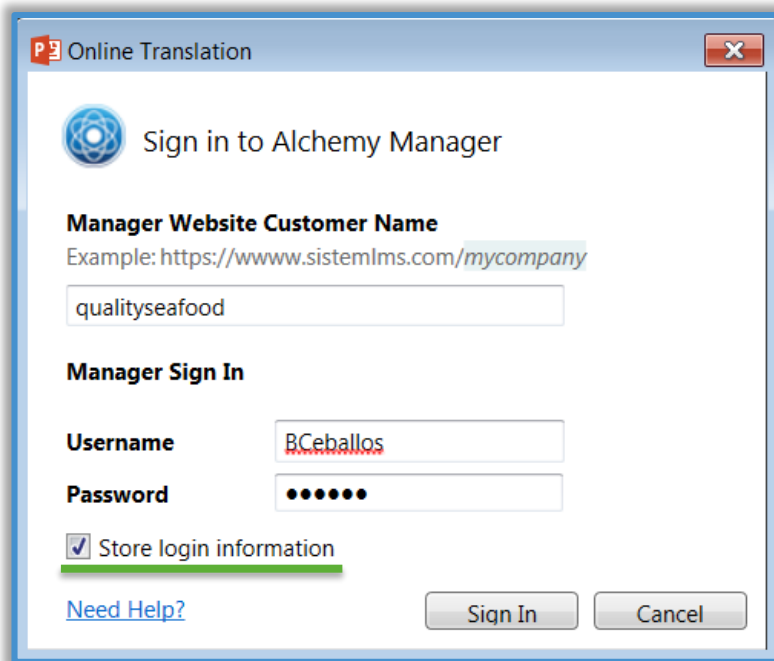
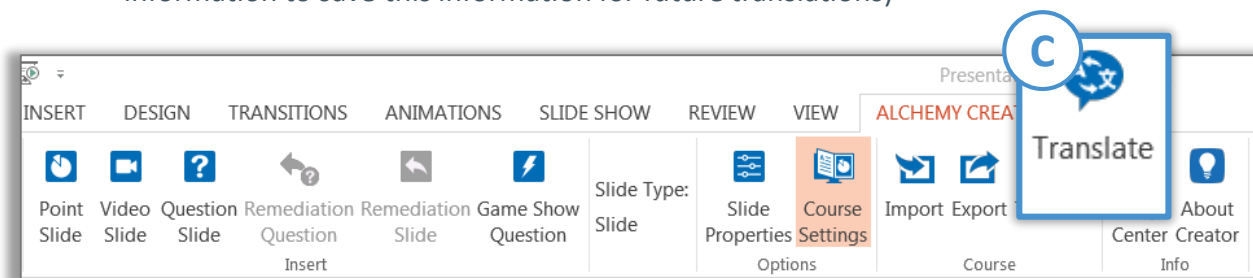
Translating Alchemy Content in Creator

Alchemy has partnered with Google Translate to create machine translations for both Alchemy and Company Specific content. As with all machine translations, it is critical to have a person familiar with the translated language verify the accuracy of the translation.

IMPORTANT NOTE: This tool will translate only the language in the Slide Properties and Course Settings columns. If you need to translate text on the slide itself, please use Google Translate directly.

Editing an Alchemy Course - Translation

- A. Import the desired Alchemy content (see page 1 for instructions)
- B. Save the PowerPoint file (no spaces in the file name)
- C. From the Alchemy Creator tab, click on Translate
 - If prompted, accept the End User License Agreement (EULA)
 - Enter your Alchemy Manager credentials (check the box next to Store login information to save this information for future translations)



Creator 2

Translating Alchemy Content in Creator

Editing an Alchemy Course – Translation, con't

- D. From the drop-down boxes, choose the current language of the course, along with the language desired for the translation.
- E. Click Translate
- F. Once the translation has completed (this may take several minutes), click Close
- G. You will receive a message that your original document was preserved, and that you are working in a new document with the translation
- H. Review the Slide Text in the right-hand column, making edits where necessary
- I. Save the file

