



The Smarter Choice

TSC barcode label printer
Solution Brochure: Healthcare



TSC aims to enhance your company's success

02_03

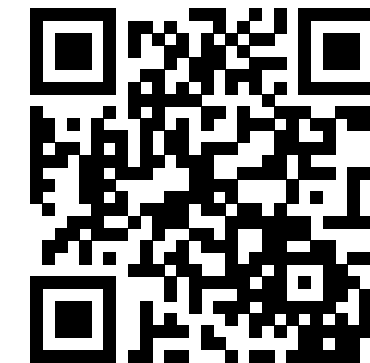
About TSC

A Top-5 global barcode printer manufacturer

04_05

Corporate philosophy and product advantages

The Smarter Choice



Contents

06_07

Simplified workflow

Improve service performance to ensure medical safety and further strengthen doctor-patient relationship

08_09

Efficiently and accurately record essential patient information

Avoid misdiagnosis

10_11

Reduce additional administrative burden on medical staff

Reduce the probability of transcription errors

12_13

Speed up examination by simplifying operation process

Effectively improve the efficiency of physician visits

14_15

Accurately confirm patient's identity

Avoid recognition errors and strive for prescription infallibility

16_17

Efficient property management

Reduce unnecessary expenditures and help maintain the quality of medical equipment

18_19

Success story

20_22

Product Overview & Recommendation

23

Global locations

TSC one of the top-five Global barcode printer manufacturers

Trusted by customers around the world. Three million units sold



All it takes to simplify your processes, make significant savings on manpower, and improve the accuracy of inventory management, production and distribution, is a simple barcode label. These are just a few of the advantages of utilizing automatic identification products.

TSC thermal printer division of Taiwan Semiconductor Co., Ltd. was set up created in 1991 for an OEM partnership with Eltron. Fair prices, excellent durability, high quality, and dedicated professional support services have given Taiwan Semiconductor a market advantage that has attracted international attention and patronage. The company continued to improve its operations, products and services to meet customer needs as well as strengthen its position in the automatic identification market. TSC started to sell its products in Asia, North America and Europe, and then expanded to include Middle East, Africa and the Oceania to build a client base that spans the globe.

As the thermal printer division grew globally, Taiwan Semiconductor decided to maximize long-term competitiveness and future business development. The thermal printer division became an independent entity under the name of TSC Auto ID Technology Co., Ltd. in 2007, which focuses solely on the manufacture and sales of barcode label printers and became an over-the-counter-listed company in November 26th, 2008.

In January 2016, TSC completed the acquisition of the US barcode printer division of Printronix Inc. whereby TSC became one of the top-5 global thermal barcode printer brands. This acquisition incorporated 40 years of Printronix experience in the barcode printing industry into TSC and will enable the development of even more innovative products. Together, TSC's increased sales and service network around the globe will allow TSC to be more reactive to customer needs. Combining both brands mark a giant milestone in the path towards the goal of becoming the world's number one all-round supplier of automatic identification solutions.

Corporate philosophy and product advantages



The Smarter Choice

High performance barcode and label printers at a fair price

Changes in global industry have made automatic identification systems almost mandatory. Customer requirements have become increasingly demanding in terms of specifications, features, quality, costs and services. Any one of these details can be the key to success of a product. How accurately and quickly a company can grasp the market trend and respond to the needs of customers is often what determines marketplace success.

TSC believes that excellent quality and dedicated services are vital to ensure brand loyalty. At TSC, we not only have a professional technical team, but we also pay close attention to the needs of our customers around the world, particularly with respect to the development of new products.

TSC is a Taiwanese brand, dedicated to the highest standards in terms of design, user-friendliness, stability and durability. We have supplied more than 3 million label printers to the automatic identification market – a testimony to the world-class quality of our products. The TSC business philosophy encompasses innovation, professionalism, and dedication to build a brand and quality customers can trust.

TSC engineers focus on system integration and product applications to ensure that all of our barcode printers can achieve a seamless match with existing customer systems, without any need for changes in factory equipment or processes. This "trouble-free replacement" helps to streamline processes, reduce the error rate, improve production efficiency, lower production costs, and even improve quality. Our clients tell us that not only is TSC on par with or better than other international brand manufacturers in terms of quality, but most importantly our products are highly firmware-compatible. Switching to TSC from another brand requires minimal setup. Our longstanding experience in all vertical market applications, flexible customized services, and the reliability of our products together form the core of TSC competitiveness and success.

We do everything it takes to fulfill the TSC brand promise every day with our smart products and excellent customer service.

If you are looking for a high quality, durable, and compatible barcode printer at a reasonable price, one which can easily be integrated into your current system and comes with great after-sales services, then TSC is the obvious choice.



Our R&D team responds to market trends with the development of new product functions and work to ensure compatibility to satisfy the needs of the market.



Product customization and integration and trouble-free replacement ensures smooth system installation.

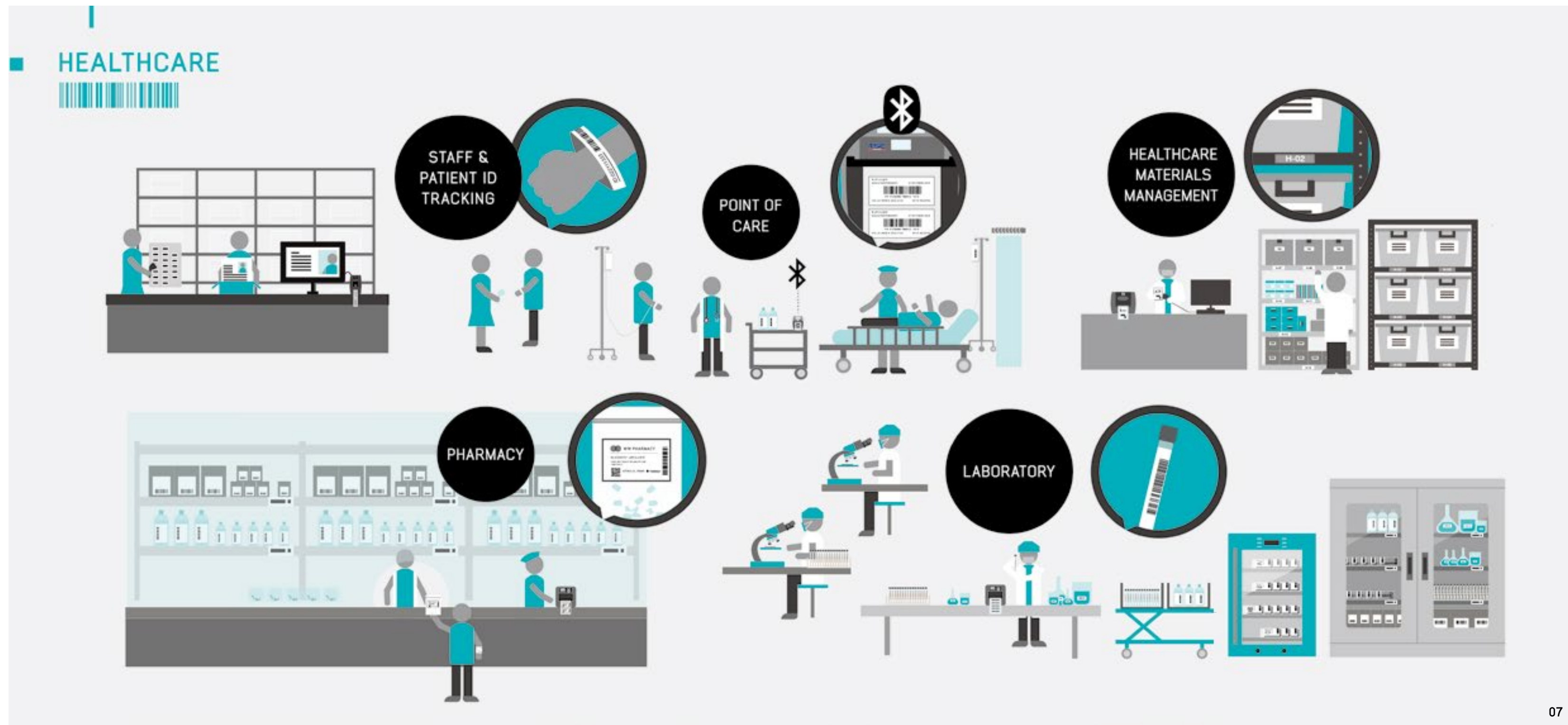


Every printer is given two 100% inspections to ensure perfect quality and reliability.



Simplified Workflow

Improve service performance to ensure medical safety and further strengthen doctor-patient relationship



Efficiently and accurately record essential patient information

Avoid misdiagnosis



Model_
TDP-324W Series



Whenever there are news reports of medical malpractice or negligence, one may immediately think of misdiagnosis. It is a stereotype that has been imprinted in people's minds, reminding medical workers to be alert at all times to avoid and prevent similar situations.

In order to avoid the recurrence of such incidents, many medical institutions have implemented identification system accompanied with the use of scanners and TSC's barcode label printers. One can now easily access patient's medical records with this timely identification process.

The procedures are quite simple. Once the patient is registered to stay in the hospital, a personal barcode wristband is printed by the label printer. The patient's identity can be quickly identified with a barcode scanner in different departments as he or she goes through blood test, X-ray, ultrasound, urine test and more. By doing this, the doctor can obtain relevant medical records from the central database, and examiners can verify the patient's identity through the bracelet to ensure that the test results belong to the patient.

In addition, the names of the doctor, the examiner and even the nurse who was present during medical treatment may also be recorded at the time of the patient's visit. Therefore, whenever an issue arises during the medical process, the central database can be checked to quickly find the source of the problem, which significantly reduces the probability of misdiagnosis.

Recommended Product: TDP-324W Series

TDP-324W series is a high resolution wristband printer that was designed specifically for industries that utilize wristband consumable products such as healthcare, entertainment and service sectors. The design is a small and light-weighted wristband that is fitted with a 2-inch wide direct thermal barcode printer. The TDP-324W is compatible with a wide variety of wristbands on the market. It can hold a 6.5 inch outer diameter media, almost eliminating the need for an external media holder. The user not only no longer needs to worry about not having the capacity on the wristband for large media supplies, but also efficiently conserves the time and number of replacements during each printing jobs.

Key Features

- Available in 203 dpi and 300 dpi resolutions
- High quality double-walled clamshell design
- Designed to hold 6.5" OD wristbands
- Adjustable sensor to support multiple media types
- Features an LCD printer-status display
- Standard real-time clock (an expensive option on other small-footprint units)
- Cerner Certified and works in any hospital system
- TSPL-EZD firmware for plug-n-play ease and includes Eltron®, Zebra® and Datamax language support

Reduce additional administrative burden on medical staff

Reduce the probability of transcription errors



Model_
Alpha-2R



Large medical institutions run non-stop 24 hours a day, 365 days a year to provide treatment to each patient in need. In order to cope with the abundance and complex workload, an enormous workforce is necessary to make sure the entire medical treatment process is performed smoothly. As a result, medical staff spend a lot of time writing into a "work log" to ensure all patient information, including the treatment status, medication information, test results are recorded correctly for other staff. The correctness of a completed work log is critical for successful and safe treatment for each patient.

However, filling out paperwork is time consuming and can often run into staff's break time. This can result in physical and mental fatigue on top of an already stressful environment. The combination of factors has a detrimental effect on medical service. One of TSC's partners developed a system to help alleviate the amount of time spent on paperwork. Combining a TSC barcode label printers with a scanner, the quality of medical care is greatly improved.

Is there any possibility to reduce paperwork?

The TSC portable barcode printer prints out a personal barcode for each patient. Whether during emergency medical treatment or hospitalized treatment, the barcode can provide information on medication, specimen, pathological biopsy, or various types of medical records. The medical staff simply needs to carry a Personal Digital Assistant (PDA) or information-based medical cart during checkups. By scanning the wristband of the patient, the medical staff can identify the records, key in the medication given, do checkups and upload information through the internet to the central database for future viewing, making the transitioning process for the medical staff simpler and smoother.

Such a simple and efficient working model will effectively lessen the burden of paperwork, while at the same time reducing the chances of human error during writing. The medical professionals can focus more on their work, not only improving the quality of treatment but also giving the patients substantially more medical care.

Recommended Product: Alpha-2R

Alpha-2R is a compact, easy-to-carry, portable printer that is simple to use and fast to print, making it effortless to use even in action. A single charge can support up to 17 hours of usage. The user can easily meet the needs of a variety of mobile printing without worrying about a power shortage.

Key Features

- Compact design to meet daily mobile printing needs
- High capacity 1620 mAh, last more than 17 hours of printing receipts on a single battery charge
- Large media capacity 50.8 mm (2") OD to reduce media change frequency
- High-speed processor and extensive memory for fast print speeds of up to 102 mm (4") per second
- IP54-rated environmental case to resist dust and water
- Plastic design with rubber over-mold construction that withstands 5ft. (1.5 m) drop, and with IP54 case can withstands 5ft. (2 m) drop
- Wired & wireless communication interfaces: USB 2.0, RS-232, Bluetooth 4.0, Bluetooth 4.2+MFi, NFC, and 802.11 a/b/g/n
- Supports TSPL-EZ, ESC-POS, CPCL emulation

Product specifications please refer to page 20 and 21.

Speed up examination by simplifying operation process

Effectively improve the efficiency of physician visits



Recommended Product: TC Series

TC Series features four models to suit your needs and budget. It includes LED versions (TC200 and TC300) and color LCD versions (TC210 and TC310). The design represents TSC's innovation and commitment to user experience. With its compact construction, the TC Series is designed for high performance. The print speed can go up to 6 inches per second and reach a 4 inch wide label print width, appropriate for medical examination documents. The addition of the color screen gives users a clearer and easier way to access operational information. TC series remains the best choice on the desktop label printer market because of its durability, performance and speed.



Model_
TC Series



Key Features

- Perfect size-space saving design
- 2.3" color TFT display for easy to get information (only for TC210 and TC310)
- High quality double-walled clamshell design
- Easy media loading featuring center-biased spring loaded design
- Available in 203 dpi and 300 dpi resolutions
- TSPL-EZD firmware for plug-n-play ease and includes Eltron®, Zebra® and Datamax language support
- Cerner certified and works in any hospital system
- ENERGY STAR® qualified

Large medical institutions serve thousands of patients a day, many of which emergency treatment and day-to-day outpatients often require further examinations to diagnosis the patient's physical condition, such as internal organ inflammation, bone fracture, abnormal blood condition and much more. Large medical laboratories also process a high number of specimens on a daily basis.

In the past, everything from the patient's medical records needed to be written down manually. Not only is the operation slow and time consuming but it is also prone to errors caused by illegible writing or misinterpretations. In particular, the number of samples to be processed by the laboratory is huge. To ensure the accuracy of all specimens samples, and to

Is there any possibility of faster examination?

transfer the examination data back to the emergency department and outpatient department in time, TSC has provided a solution to help speed up each physician visit.

Many large medical centers and laboratories have implemented scanners and TSC's barcode label printers. Once the emergency and outpatient doctors fill in an examination form, the computer in

the laboratory would immediately receive the data. The patient can be verified via scanning the barcode to confirm the patient's identity and re-confirm that the specimen belongs to the patient. The examination result would be immediately sent back to the clinic after examination, reducing patient wait time, increasing the speed of each physician visit, and avoiding misdiagnosis.

Recommended Product: TX200 Series

TX200 series is a high performance 4-inch wide desktop label printer with a maximum print speed of 8 inches per second that is designed to handle a wide variety of applications. The clamshell design can be easily flipped open for ribbon installation. The double-layer case provides increased durability under impact. The large capacity for media can hold a up to a 300 meter ribbon and up to a 5" OD label roll, reducing the number of replacements and making the printing more efficient.

Key Features

- Up to 203 mm (8") per sec. print speed
- User-friendly clamshell design for easy drop-in media loading
- 3.5" color TFT Display (standard for TX600, optional for TX200 & TX300)
- Ribbon capacity up to 300 m and large media capacity up to 127 mm (5") OD
- Available in 203 dpi, 300 dpi and 600 dpi resolutions which makes it ideal for printing very small 2D barcodes, graphics, fine print and other ultra-high-resolution images
- TSPL-EZD firmware for plug-n-play ease and includes Eltron®, Zebra® and Datamax language support
- ENERGY STAR® qualified



Model_
TX200 Series



Accurately confirm patient's identity to avoid recognition errors

Strive for prescription infallibility



Model_
DA220 Series

Key Features

- High quality double-walled design for the durability
- Compact size-space saving design
- User-friendly clamshell design for easy drop-in media loading
- Up to 152.4 mm (6") per sec. print speed
- TSPL-EZD firmware for plug-n-play ease and includes Eltron®, Zebra® and Datamax language support
- ENERGY STAR® qualified
- Cerner certified and works in any hospital system

The news often reports on how hospital staff accidentally give patients the wrong medication potentially resulting in great physical harm or even fatality. In order to prevent this from happening, many countries have implemented various types of medication administration processes, such as United States's "Five Rights of Medication Administration", China's "Three Read Seven Confirmation" and Taiwan's "Three Reads, Five Confirmations." These are the measures taken to ensure medical personnel go through the proper procedure to confirm that the medication, patient, time, dosage and route of administration is correct.

Can one stop the possibility of giving out the wrong prescription?

While major medical institutions face a significant number of patients every day, the number of nursing staff, however, has long been inadequate. The security measures is of "Five rights" or "three reads, five confirmations" are only preventative measures and rely on manual operation or human interpretation. The combination of using a scanner and TSC's barcode label printer can solve the issue of an imbalanced medical staff to patient ratio.

Once a doctor has completed the diagnosis, all data will be instantly sent to the central database and to the pharmacy instantly. Once the information is received, the pharmacist will be able to fill the prescription as well as confirm the content. Also, the name of the medication, dosage, frequency of use and other information, and the patient's personal information can all be printed on the medicine container by the TSC label printer. When the patient receives their medication they can confirm all the information on the container again to eliminate the possibility of receiving the wrong prescription.

In addition, when the medical staff prescribes medicine, they can use the scanner to reconfirm the medicine-related information and patient details to avoid mistakes. Also, the pharmacist's name can be printed on the medicine container for traceability if a mistake was made.

Recommended Product: DA220

The TSC DA220 printer is compact in size, and this 4-inch printer is extremely stable and durable. It can print up to 6 inches per second to easily achieve high-quality label printing. The DA220 series has a large memory capacity of 128 MB Flash, 64 MB SDRAM, which is the perfect choice for medical institutions with needs for printing specific label format or fonts.

Product specifications please refer to page 20 and 21.

Efficient property management can reduce unnecessary expenditures

Help maintain the quality of medical equipment



Model_ TX200 Series

Key Features

- User-friendly clamshell design for easy drop-in media loading
- 3.5" color TFT display for intuitive ease of operation (standard for TX600, optional for TX200 & TX300)
- Ribbon capacity up to 300 m and large media capacity up to 127 mm (5") OD
- Available in 203 dpi, 300 dpi and 600 dpi resolutions which makes it ideal for printing very small 2D barcodes, graphics, fine print and other ultra-high-resolution images
- TSPL-EZD firmware for plug-n-play ease and includes Eltron®, Zebra® and Datamax language support
- ENERGY STAR® qualified



Model_ ME240 Series

Key Features

- Die-cast print mechanism ideal for KIOSK system or customized solutions
- Available in 203 dpi and 300 dpi resolutions
- 2-button 3-LED (basic model)/6-button LCD control panel (advanced model) for user-friendly operation
- TSPL-EZD firmware for plug-n-play ease and includes Eltron®, Zebra® and Datamax language support
- Cerner Certified and works in any hospital system

Hospitals strive to provide safe medical equipment in order to ensure that all hospital property is fully utilized. The management of the medical property is not only related to medical safety, but it is also a safeguard to each patient's health. Furthermore, effectively managing hospital resources can save costs and maintain the quality of hospital equipment.

Therefore, the primary goal for renovation is to solve the issues of medical equipment mishandling of medical supply, unclear labeling, and the lack of a complete storage management plan. TSC has found an easy way to solve these problems.

Is it possible to put an end to medical waste?

In order to effectively improve pharmaceutical and medical equipment manufacturer's management of resources, many manufacturers have implemented a Unique Device Identification (UDI) system. Many medical institutions are using a "warehouse management concept" to ensure efficient use of resources. Using a scanner and TSC's barcode label printer, they are able to successfully resolve the issue of wasting medical supply and property. The method is simple. During procurement, a barcode is used

that includes information on the item's name, quantity, effective period, company and other pertinent information. The label can also record the information of where the purchased goods should be stored, reducing chances of misplacement or theft. All this information can be provided to the pharmaceutical and medical equipment manufacturer.

When the supplies arrive, one can use a scanner to confirm the relevant information, and all information will be sent to the central database for the management staff to obtain the flow of all supply. Access to the supply would require scanning the barcode to record the taker's name, quantity and reason for usage into the computer. Management charts of how all the supply has been used can be made on a monthly or quarterly basis, making sure that all property equipment has been correctly utilized. The charts can also remind the management staff of property maintenance to ensure the quality of equipment. Most importantly, this can help put an end to medical equipment and property waste, reducing hospital's expenditure.

Recommended Products: TX200 Series, ME240 Series

TX200 series is a high-performance 4 inch wide desktop label printer with up to 600 dpi high-resolution print performance, particularly suitable for medical related printing jobs, as it requires the clear print of each language font. The maximum print speed is 8 inches per second. The clamshell design can be easily flipped open for ribbon installation. The double-layer case provides increased durability under impact. The large-capacity media cabinet can hold a maximum of 300 meter of ribbon, as well as large volume for labels, reducing the number of ribbon replacements and making printing more efficient.

ME240 series is an economical industrial barcode printer. The metal design provides a steady structure suitable for large medical institution's warehouse. The heavy-duty die-cast aluminum print mechanism can be assembled into automatic packaging or labeling machinery, which can be applied to individual medical supply's customized packaging, labeling or related applications. ME240 series installed with the TSPL-EZ printer programming language which makes it effortless to write programs and manage file management. It features internal scalable True Type fonts and is a fully compatible set of standard industry emulations right out of the box. ME240 is a label printer that has excellent compatibility.

Success story

Medical Safety Maintenance Expert



Recommended Models_
TTP-244 Pro, TTP-247, TA210

Major medical institutions have been working diligently to ensure the safety of patient's medication, further enhance medical efficiency, and to prevent medical negligence. The most urgent matter at stake, is to avoid misdiagnosis and secure complete and accurate patient medical information. Another important matter to address is the misuse of prescription drugs due incorrect administration to misinterpretation of the prescription. These can be solved just by installing a barcode identification system.

As a provider of technical planning and integration solutions for automatic identification systems, TSC, along with its partners, have designed a system where medical information can be imported into the barcode label machine to solve this matter efficiently. From checking in to checking out of the hospital, the patient only needs a barcode label to be identified by scanners to connect information from different hospital departments, including identification, treatment, examination, hospitalized information, case tracking and maintenance, prescription and even medicine distribution. All patient information is integrated into a single computer file, making medical information more complete and the operation process run more smoothly. The system also reduces the burden of having the medical staff key in information. Most importantly, all patient information can be retrieved instantly and accurately, which effectively lowers the possibility of misdiagnosis and mistreatment.

In addition, the past medicine distribution operations relied entirely on medical staff manually confirming patient's information and medication. The work is quite a burden for the already occupied medical staff. Therefore the hospitals have adopted an automatic medicine packing operation system. When the doctor enters the prescription into the computer system, the information is sent to the central database to record the patient's personal data as well as sending it to the hospital pharmacy. The TSC barcode label printer then prints out the related information on a label for the medicine container that includes the patient and doctor's name, date, name of the medication, dosage and frequency and method of usage. When the pharmacist is giving out the medication, he or she only needs to use a scanner to confirm the patient's information and to make sure the medicine is giving out correctly. The risk of mistreatment is lowered substantially.

When the healthcare professionals are distributing medicine during their rounds, they can use information-based carts to provide services such as scan the patient's barcode labeled wristbands and the barcode label on their medicine bag container to confirm their identity. This helps the implementation of medication administration policy and ensure the patient's safety when taking medication.



Simplifying inspection routines to provide better medical care



Recommended Models_
Alpha-2R, Alpha-3R

Is there an easier way to speed up sample testing? Could the procedures during rounds be simplified for the medical staff? Is it possible to even reduce the time and frequency of how the medical staff goes going back and forth between patients and nursing stations?

To address these issues, TSC proposes a concrete solution. The method is very simple. A mobile barcode tracking system can be set up by installing a TSC Alpha-2R or Alpha-3R portable printer on an information-based medical cart accompanied by a scanner and PDA or tablet.

When a healthcare professional arrives at the patient's bedside, he or she can use the computer on a medical cart to check medical records, then download and review the doctor's prescriptions. A label can then be printed out the patient's information using the Alpha-2R or Alpha-3R barcode printer to be placed on the test tube. Before starting the sampling for patients, the staff needs to use the PDA to check the patient's name (scan patient's wristband) and the identity of attendant nurses (scan employee card). After confirming the information is correct, the patient will be sampled, and the test tube label will be scanned. The complete sampling process ends when all information is uploaded into the system. This not only simplifies the whole sampling process, but it also speeds up the sample examination process. Most importantly, the patient no longer has to move back and forth between different laboratories while still being able to enjoy good medical care.

Moreover, in the past, when a healthcare professional finds any question or mistake during rounds, he or she must return to the nursing station to acquire further information. After using this system, relevant information can be accessed through the online central database on the information-based cart. This allows healthcare professionals to save time from going back to the nursing station and from writing in their daily medical logs. The healthcare professional can now focus on providing quality care while reducing data errors at the same time.

Product Overview & Recommendation

	2" Width		3" Width	4" Width											
	TDP-324W Series		Alpha-2R	Alpha-3R	DA220 Series		TC Series		TC Series		TX200 Series			ME240 Series	
	TDP-225W	TDP-324W	Alpha-2R	Alpha-3R	DA220	DA320	TC200	TC300	TC210	TC310	TX200	TX300	TX600	ME240	ME340
Resolution	203 DPI	300 DPI	203 DPI	203 DPI	203 DPI	300 DPI	203 DPI	300 DPI	203 DPI	300 DPI	203 DPI	300 DPI	600 DPI	203 DPI	300 DPI
Max. Print Speed	5 IPS	4 IPS	4 IPS	4 IPS	6 IPS	4 IPS	6 IPS	4 IPS	6 IPS	4 IPS	8 IPS	6 IPS	4 IPS	6 IPS	4 IPS
Max. Print Width	2.05"	1.89"	1.89"	2.83"	4.25"	4.16"	4.25"	4.15"	4.25"	4.15"	4.25"	4.17"	4.17"	4.09"	4.09"
Max. Print Length	90"	40"	90"	90"	1000"	450"	90"	40"	1000"	450"	1000"	450"	100"	90"	40"
Ribbon	X		X	X	X		110 m		110 m		300 m			450 m	
Memory	• 4 MB Flash memory • 8 MB SDRAM • microSD card reader for Flash memory expansion, up to 4 GB		• 128 MB Flash memory • 64 MB SDRAM	• 4 MB Flash memory • 8 MB SDRAM	• 128 MB Flash memory • 64 MB SDRAM		• 4 MB Flash memory • 8 MB SDRAM • SD card reader for Flash memory expansion, up to 4 GB		• 128 MB Flash memory • 64 MB SDRAM • SD card reader for Flash memory expansion, up to 32 GB		• 128 MB Flash memory • 128 MB SDRAM • microSD card reader for Flash memory expansion, up to 32 GB			• 4 MB Flash memory • 8 MB SDRAM • SD card reader for Flash memory expansion, up to 4 GB	
LED/LCD	• LCD • 1 LED & 1 feed button		• 5 LEDs & 3 operation buttons	• 5 LEDs & 3 operation buttons	• 1 LED (3 colors: green, amber & red)		• 1 LED & feed/pause button		• 1 LED & 6 operation buttons • 2.3" color TFT display		• 1 feed/pause button • LED panel with 8 big icons		• 6 operation buttons • 3.5" color TFT display	• 3 LEDs & 2 operation buttons (basic model) • LCD & 6 operation buttons (advanced model)	
Interface	• USB 2.0 • Internal Ethernet, 10/100 Mbps • USB host, for scanner or PC keyboard (factory option)		• PCBA1: USB 2.0, Bluetooth • PCBA2: USB 2.0, MFi Bluetooth • PCBA3: USB 2.0, 802.11 a/b/g/n Wi-Fi • NFC (factory option) • RS-232 (user option)	• PCBA1: USB 2.0, Bluetooth • PCBA2: USB 2.0, MFi Bluetooth • PCBA3: USB 2.0, 802.11 a/b/g/n Wi-Fi • RS-232 (user option)	• PCBA1: USB 2.0, RS-232, Internal Ethernet, USB host, for scanner or PC keyboard • PCBA2: USB 2.0, Internal Ethernet, 10/100 Mbps • Internal 802.11 a/b/g/n wireless (factory option) • Internal Bluetooth (factory option)		• USB 2.0 • RS-232 • Centronics • Internal Ethernet, 10/100 Mbps		• PCBA1: USB 2.0, RS-232, Internal Ethernet, 10/100 Mbps, USB host, for scanner or PC keyboard • PCBA2: USB 2.0, RS-232, Internal Ethernet, 10/100 Mbps, Centronics		• USB 2.0 • RS-232 • Internal Ethernet, 10/100 Mbps • USB host, for scanner or PC keyboard • Centronics (factory option) • Slot-in 802.11 a/b/g/n wireless (dealer option)			• USB 2.0 • RS-232 • Internal Ethernet, 10/100 Mbps (factory option) • USB host, for scanner or PC keyboard (factory option) • Centronics (factory option)	
Physical Dimension (WxHxD)	109 mm x 210 mm x 260 mm 4.29" x 8.27" x 10.24"		89.3 mm x 134.5 mm x 56.5 mm 3.52" x 5.3" x 2.22"	116 mm x 148 mm x 70 mm 4.57" x 5.83" x 2.75"	172 mm x 165 mm x 195 mm 6.77" x 6.50" x 7.68"	203 mm x 191.5 mm x 259.3 mm 7.99" x 7.54" x 10.21"		203 mm x 191.5 mm x 259.3 mm 7.99" x 7.54" x 10.21"		226 mm x 198 mm x 332 mm 8.90" x 7.80" x 13.07"		226 mm x 200 mm x 332 mm 8.90" x 7.87" x 13.07"		286 mm x 259 mm x 434 mm 11.26" x 10.20" x 17.09"	

*Product models and Specifications are subject to change without notice.

	TDP-324W Series	Alpha-2R	Alpha-3R	DA220 Series	TC Series	TX200 Series	ME240 Series
Patient ID tracking	●						
Point of care		●	●				
Media supplies management				●	●	●	●
Laboratory		●	●	●	●	●	●
Pharmacy				●	●	●	●
Sterilization management for medical and surgical devices							●

Global locations

Asia Pacific	Americas	Europe, Middle East and Africa
<p>TAIWAN (CORPORATE HEADQUARTERS) TSC Auto ID Technology Co., Ltd. 9F., No.95, Minquan Rd., Xindian Dist.New Taipei City 231 Taiwan (R.O.C.) Tel / +886 2 2218 6789 Fax / +886 2 2218 5678 E-mai / apac_sales@tscprinters.com Technical Support / apac_support@tscprinters.com</p> <p>TAIWAN (LI ZE PLANT) TSC Auto ID Technology Co., Ltd. No.35, Sec. 2, Ligong 1st Rd.Wujie Township, Yilan County 268 Taiwan (R.O.C.) Tel / +886 3 990 6677 Fax / +886 3 990 5577 E-mail / apac_sales@tscprinters.com Technical Support / apac_support@tscprinters.com</p> <p>CHINA Tianjin TSC Auto ID Technology Co., Ltd. 2F., No. 165, Huang Hai Rd. Tianjin Economic-Technologic Development Area Tianjin 300457 China Tel / +86 22 5981 6661 Fax / +86 22 5981 5312 E-mail / apac_sales@tscprinters.com Technical Support/ china_support@tscprinters.com</p> <p>INDIA TSC India Representative Office Office No. 711-B, 7th Floor, Damji Shamji Corporate Square, Pantnagar, G. A. Link Road, Ghatkoper (East) - 400 075 Mumbai, India Tel / +91 2267 082 465 E-mail / apac_sales@tscprinters.com Technical Support / apac_support@tscprinters.com</p> <p>KOREA TSC Korea Representative Office #1003, 53, Digital-ro 31gil, Guro-ro, Seoul, Korea (E&C Dream Venture Tower 5th) Tel / +82 2 852 3322 E-mail: apac_sales@tscprinters.com Technical Support / apac_support@tscprinters.com</p>	<p>USA (CORPORATE OFFICE) TSC Auto ID Technology America Inc. 3040 Saturn Street Suite #200, Brea, CA 92821 U.S.A. Tel / +1 657 258 0808 Fax / +1 657 258 0809 E-mail / americas_sales@tscprinters.com Technical Support / americas_support@tscprinters.com</p> <p>MEXICO TSC Mexico Representative Office idc-COMPONENTES S.A. de C.V. Carretera Base Aérea Militar 5850 int. 8 Zapopan, Jalisco CP 45019 Mexico Tel / +52 (33) 3165 7379 Fax / +52 (33) 8421 9606 E-mail / americas_sales@tscprinters.com Technical Support / latintechsupport@tscprinters.com</p> <p>BRAZIL TSC Brazil Representative Office Rua veriano Pereira ,No.63. Conj.36 - Saude Sao Paulo-SP Brazil Tel / +55 (11) 99597 8098 E-mail / americas_sales@tscprinters.com Technical Support / americas_support@tscprinters.com</p>	<p>GERMANY (CORPORATE OFFICE) TSC Auto ID Technology EMEA GmbH Georg-Wimmer-Ring 8b 85604 Zorneding Germany Tel / +49 (0) 8106 37979 00 Fax / +49 (0) 8106 37979 05 E-mail / emea_sales@tscprinters.com Technical Support / emea_support@tscprinters.com</p> <p>RUSSIA TSC Auto ID Technology EMEA GmbH Nizniy Susalnyi pereulok 5, bld 19, 105064 Moscow Russia Tel / +7 495 249 9017 E-mail / emea_sales@tscprinters.com Technical Support / emea_support@tscprinters.com</p> <p>MIDDLE EAST DAFZA Building 7WA/ West Wing Office Number - G050 Dubai, UAE Tel / +971 4 2533 069 Fax / +971 4 2533 071 E-mail / emea_sales@tscprinters.com Technical Support / emea_support@tscprinters.com</p>



TSC aims to enhance your company's success