

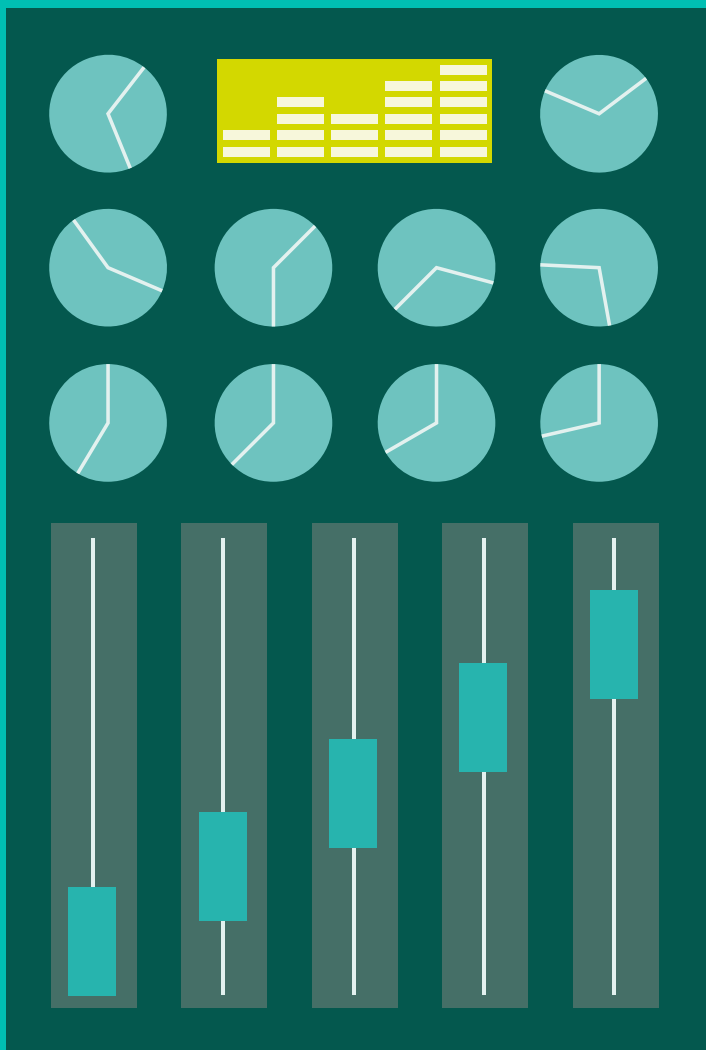
# Learning platforms



# The only LMS you'll ever need, from a team you can trust

Whatever the size of your business, we know you need a learning management system that'll deliver great learning and help you measure results. And we can help you get there.

We can deliver you a Totara Learn platform tailored to suit your needs. And we'll help you customise and scale your LMS so that it's a true go-to destination for your learners – the cornerstone of your L&D strategy.



## Crank it up to the max

Why keep it quiet? We'll build the perfect platform to amplify your learning content  
[www.kineo.com](http://www.kineo.com)



## Why we're your Totara partner of choice

As a founding partner of Totara our experience is unrivalled. We've been there from the very beginning, so you can trust us to create, develop and support your Totara platform.

To get the most from your investment we offer a variety of hosting plans. Our SaaS solution takes away the hassle of hosting for you, and means you'll benefit from regular updates and an ongoing development roadmap.

And we provide first-class support services from the moment your LMS goes live. Whatever crops up we'll be there to help you.

## Why choose Totara?

Open source, feature rich and flexible, Totara Learn stands out from the crowd.

Our consultants will work with you to develop a platform that delivers what you need and provides a great user experience.

Your Totara Learn platform will be simple to use, accessible on multiple devices and easy for you to maintain. It can be branded and configured for your business, giving your learners a seamless experience. And it's easy to extend your solution over time – for more users, more courses or to add extra functionality.

### A wealth of features

- Manage elearning, classroom training, virtual classrooms, work-based activities and social learning
- Assess learning and performance with diagnostics, quizzes, assessments and polls
- Create clear, personalised learning plans
- Include performance management with online appraisals and 360 feedback
- Give your learners the power to go social with forums, chat, wikis and timelines
- Access dashboards and reports for learners, managers, trainers and team
- Plug in e-commerce to create revenue from your courses
- Integrate with existing systems, such as your CRM or HR portal.

# We're on your side

Find out how we'll help your team  
get the best results

[www.kineo.com](http://www.kineo.com)





## Need it fast and simple?

Every platform we deliver is tailored specifically for your business. But if you need things a little simpler with no custom features, our express SaaS offer may be what you're looking for.

Our software-as-a-service solution means you'll get all the benefits of a fully featured Totara Learn platform with no hassle. Quick and easy to get up and running, it's hosted by us so you'll automatically benefit from free annual upgrades to the latest version of Totara.

We'll match your LMS to your brand and can easily migrate content over from your existing system.

And we've added some enhancements to standard Totara to create an even better user experience that you won't find anywhere else.

## Unleash learner power

Help social learning become part of your organisation's culture by creating a platform that allows learners to network and share ideas. Right out of the box, Totara Learn includes functionality your users will love – including wikis, forums and blogs.

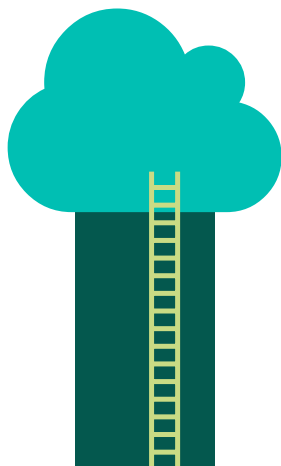
Need more? Totara Social is an open-source enterprise social network platform designed to connect people to knowledge and resources. It provides an intuitive platform for users to connect with others, share their ideas and manage their own profile.

### **Deliver the content they really need**

Easily integrate a content curation tool that will crawl millions of articles every day. Deliver relevant and up to date content into the platform so your learners can find it whenever they need it.

### **Keep your people motivated**

Add badges and digital credentialing to give your learners a portable, recognised way of demonstrating their skills and achievement.





## Why you'll love developing your platform with us

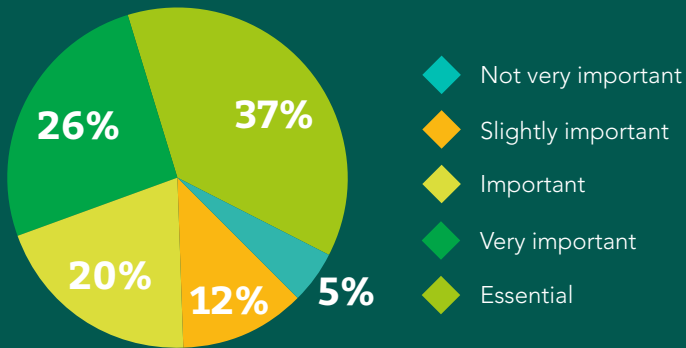
- We're your partners every step of the way – working closely with you to identify, prioritise and document your requirements
- As a platinum partner and Totara founder our experience is unrivalled. We know Totara inside out
- Whatever your needs, we have an LMS solution that'll fit for you – whether you're starting small, up-scaling or thinking big
- We're experienced in implementing complex customisation and integration – we've created some of the largest scale Totara sites in the world
- Getting your LMS up and running is just the beginning – we provide world-class hosting and support to troubleshoot all your ongoing challenges

**“There is a real difference for me between a client-supplier relationship and a true partnership. I have a really strong partnership with Kineo. There is a mutual respect there. That’s what makes a great partnership work – trust in each other”.**

**Caleb Foster, Director of MindBoost Learning**



## How important is your LMS to your L&D strategy?



From Kineo's Learning Insights 2018





# PizzaExpress uses the flexibility of Totara LMS to create their all-in-one learning solution

## The challenge

With ambitious growth plans across the business, PizzaExpress needed to revitalise its elearning. The old solution was limited to off-the-shelf health and safety courses and the LMS was merely a tick-box tool for compliance.

Being unfamiliar with what they could get from an LMS, the PizzaExpress team needed a supplier who'd bring a collaborative and understanding approach, able to challenge and ask the right questions.

## The solution

Kineo and PizzaExpress used a Totara LMS to create a scalable learning solution to which they can continually add new custom elearning courses. Beginning with compliance courses, they have since restructured the LMS and added their induction training too. The flexibility of the system has allowed them to move from solely mandatory courses to include things like career development journeys.

The scope for configuration, development and tweaks is huge with open-source Totara and PizzaExpress has full confidence that it can handle all of their current and future needs. The next step is to roll it out internationally.

## The results

PizzaExpress has moved away from off-the-shelf elearning for compliance to an all-in-one solution aligned with their L&D strategy. It has resulted in huge cost savings and enabled them to use a more blended approach, top and tailing face-to-face sessions to get better results than face-to-face training alone.

The simplicity of the system has been invaluable and a huge time saver. It has also resulted in a better experience for employees, from restaurant level all the way up to executive. The learner now has one go-to place for all learning needs and buy-in has been a resounding success.



**“We have a collaborative relationship with Kineo rather than a standard supplier relationship. Kineo’s ability to ask the right questions has been invaluable. Since going live, we continue to have a front man at Kineo – reassuring because they take whatever query or issue and find the best solution”**

Ben Walton, Learning Technology Specialist at PizzaExpress

**We deliver  
measurable  
change and  
results**

**WE HAVE TEAMS BASED  
AROUND THE GLOBE  
WHO ARE DEDICATED  
TO BUILDING LOCAL  
RELATIONSHIPS**

**We partner  
with our  
clients every  
step of  
the way**

**WE'RE TOOL AGNOSTIC,  
DELIVERING HIGH  
IMPACT SOLUTIONS  
WHATEVER THE  
REQUIREMENT**

**We make our  
clients heroes –  
understanding  
their challenges  
and making  
them our own**

## **WHY KINEO?**

**We know what  
works when  
it comes to  
learning &  
development**

**WE'RE A CITY & GUILDS GROUP  
BUSINESS, GIVING US ACCESS TO  
THE COMBINED STRENGTH OF A  
GROUP WHICH LEADS THE WAY IN  
GLOBAL SKILLS DEVELOPMENT**

**We begin with  
a passion for  
improving  
performance  
through learning**

**WE STIR THINGS UP,  
ALWAYS EXPLORING NEW  
IDEAS AND LOOKING FOR  
INNOVATIVE SOLUTIONS**

# We're shaping the future of learning

Everything we do at Kineo stems from a simple idea – if we design a better learning experience, together we'll get better results.

We help the world's leading businesses improve their performance through learning and technology. We'll work with you to take on your challenges – and deliver results.

We specialise in:

- consultancy and advice on your L&D strategy
- bespoke digital learning content – elearning, video, animation, performance support resources
- a range of off the shelf learning content
- learning management systems and platforms
- blended leadership and management development
- training and support to up-skill and develop your L&D team.

So, how can we help you? Get in touch and experience Kineo.



[info@kineo.com](mailto:info@kineo.com) | [www.kineo.com](http://www.kineo.com) | +44 1273 764070

Innovative digital learning | LMS solutions | Off the shelf learning resources | Consultancy