

# Retaining wall systems



BEST manufacture a range of retaining wall systems that are ingenious, versatile and stylish.

Our systems offer mortar free installation for quick and orderly construction making them the ideal choice for either the contractor or the DIY project.

All BEST retaining wall systems offer a durable textured finish with elegant, defining bevel edges on all four sides of the product face.

When teamed with BEST's extensive and complimentary range of locally made paving options, maximum effect is achieved with minimum effort and the possibilities for unique garden design become endless.



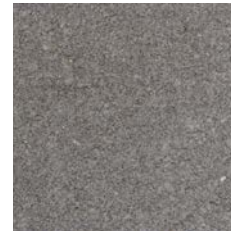
## Stone Hedge

A light weight, easy to use option, ideal for domestic projects. Suitable for straight or curved walls perfectly suited for the construction of terracing, planters, tree rings and garden edges.

Origin: made in South Australia.



Beach sand



Charcoal



Sahara

## Stone Wall

A mid-sized, yet easy to install option that produces a vertical finish. Suitable for straight walls, and can be used as either a decorative or structural unit.

## Stone Max

A sturdy structural unit that goes together easily and stays together permanently. Equally suited to either domestic or large scale civil projects.

Printed samples in this brochure give only a general indication of the product colours. We recommend you request an actual sample.

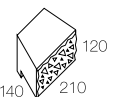
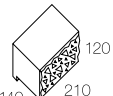
Construction Information: When constructing a retaining wall consult your local council for regulations regarding wall construction and height.

# Retaining wall systems

## Stone Hedge

## Specifications



	Dimensions (mm)	Units per pallet	Unit weight (kg)	Units per m <sup>2</sup> *	Units per lineal metre
	<b>Stone Hedge</b>	<b>216</b>	<b>7.0</b>	<b>38.74</b>	<b>4.8</b>
	<b>Stone Hedge Cap</b>	<b>192</b>	<b>7.4</b>	<b>38.74</b>	<b>4.8</b>

Colour Range: Charcoal, Sahara, Beach Sand

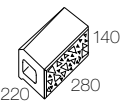
\* Laid to BEST specifications

# Retaining wall systems

## Stone Wall

## Specifications



Dimensions (mm)	Units per pallet	Unit weight (kg)	Units per m <sup>2</sup> **	Units per lineal metre
 Stone Wall 220 140 280	90*	14	25.0	3.5

\*Each pallet includes 15 solid blocks for use as finishing ends, or to be mitre cut for 90 degree corners.

Colour Range: Charcoal, Sahara, Beach Sand

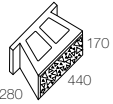

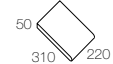
\*\* Laid to BEST specifications

# Retaining wall systems

# Stone Max

# Specifications



	Dimensions (mm)	Units per pallet	Unit weight (kg)	Units per m <sup>2</sup> *	Units per lineal metre
	<b>Stone Max</b>	48	27	13.19	2.3
	<b>Stone Max Corner Block</b>	60	22	-	-
	<b>Bullnose Cap<sup>#</sup></b>	240	7	-	4.5

<sup>#</sup>The Bullnose Cap is bevelled on one side but turned upside it is straight edged. Either finish may be used.  
Colour Range: Beach Sand, Charcoal, Sahara

\* Laid to BEST specifications