

**Simply powerful data protection at the lowest cost-to-protect.**

**Guaranteed.**

**Simple**

- **Management:** automate daily tasks, integration with native management tools
- **Deployment & upgrade:** 2U appliance is customer installable and upgradable
- **Grow-in-place and to the cloud:** grows in place from 24TB-96TB, in 12TB increments, with simple license keys; extensible to the cloud with no additional hardware

**Powerful**

- **Comprehensive coverage:** largest application ecosystem
- **VMware-optimized:** Protect up to 5x more VMs, cost-effective to scale to more VMs, leading integration with vSphere
- **High-performance:** 55:1 avg dedupe, plus up to 2x faster backups, 7x more backup streams, up to 98% less bandwidth required than competitors;
- **Efficient cloud:** Cloud Tier for long-term retention to cloud and Cloud Disaster Recovery with full orchestration

**@ Lowest cost-to-protect**

- Costs up to 80% less to protect and protects up to 4x more data in one 2U appliance
- Up to 2x faster backups
- Densest 2U appliance—up to 20% more capacity

**Guaranteed under the Future-Proof Loyalty Program**

- Peace-of-mind with 3-year satisfaction guarantee, predictable support pricing, hardware investment protection, and up to 55:1 data protection deduplication guarantee

# DELL EMC INTEGRATED DATA PROTECTION APPLIANCE (IDPA) DP4400

Converged data protection solution that is the perfect mix of simplicity and power for mid-size organizations and ROBO environments—that delivers the lowest cost-to-protect and is guaranteed under the Future-Proof Loyalty program.

**The power of Dell EMC enterprise data protection—now for mid-size organizations and ROBO**

Organizations today, especially mid-size organizations, are faced with increased complexity—data growth, application diversity, increased numbers of users, and resource constraints—driving the need for solutions that enable them to do more with less. Dell EMC is helping customers modernize their data protection installations and replace legacy backup applications.

**The IDPA DP4400 is the perfect mix of simplicity and power**

The IDPA DP4400 is a converged, integrated data protection appliance tailor-made for mid-size organizations, as well as enterprise remote office branch office (ROBO) deployments. It offers complete backup, deduplication, replication, recovery—plus, cloud readiness with disaster recovery and long-term retention to the cloud—all in a convenient 2U appliance. While competitive products sacrifice coverage, performance and efficiency in the name of simplicity, IDPA DP4400 delivers it all without the need to sacrifice—simply powerful data protection at the lowest cost, and is guaranteed.

The IDPA DP4400 offers converged data protection in a 2U, Dell EMC PowerEdge 14G Server platform that combines protection storage and software, search, analytics and cloud readiness—in a single appliance. It is simple to manage, deploy and upgrade, and grows in place from 24TB to 96TB—all with license keys and no additional hardware, downtime or complexity.

The IDPA DP4400 is powerful in its comprehensive coverage, performance and cloud readiness. It supports the largest application ecosystem and has been optimized for VMware, shortens backup windows by up to 2x, requires up to 98% less bandwidth, and supports 7x more backup streams. It delivers up to 20% more capacity in a 2U appliance and an average rate of 55:1 deduplication, for protection of approximately 5PB of logical data with a 2U, 96TB appliance. And, with native Cloud Tier for long-term retention, the IDPA DP4400 can protect up to 14.4PB of data. The IDPA DP4400 also offers efficient and cost-effective native Cloud Disaster Recovery (to Amazon AWS) with end-to-end orchestration—failover in 3 clicks, and fallback in 2 clicks—all without the need for additional hardware.





## DELL EMC INTEGRATED DATA PROTECTION APPLIANCE DP4400

### Density and performance

- Up to 288 TB (usable), 14.4 PB (logical) capacity with Cloud Tier
- Enhanced performance with NVMe flash

### Industry-leading efficiency

- Average 55:1 data deduplication rate
- Instant access and restore

### Enterprise applications

- Oracle, SAP, Microsoft Exchange, SharePoint, SQL Server, Sybase, MySQL, MongoDB, Pivotal Greenplum, IBM DB2, Lotus, and more
- Hypervisors: VMware, Microsoft Hyper-V

### Cloud Tier

- Public, private, or hybrid
- ECS, Virtustream, Azure, Amazon

### Cloud Disaster Recovery

- End-to-end orchestration
- Failover in 3 clicks, failback in 2 clicks
- Amazon AWS S3

The IDPA DP4400 is also optimized for VMware environments. With its leading VMware integration, the IDPA DP4400 empowers vAdmins to perform most common backup and recovery tasks directly from the native vSphere UI. Protecting up to 5x more VMs in a single 2U appliance, and with automation across the entire VMware data protection stack (VM deployment, deployment of proxies and movement of data to protection storage), the IDPA DP4400 makes it easy and cost-effective to scale up to protect more VMs. And, it provides faster VMware backups and recoveries, and more efficient networking and capacity with its leading deduplication and bandwidth utilization.

With all of these capabilities, the IDPA DP4400 delivers the industry's lowest cost-to-protect—costing up to 80% less to protect and protecting up to 4x more data in one 2U appliance. And, the IDPA DP4400 is included in the Future-proof Loyalty Program that now features a new, up to 55:1 Data Protection Deduplication Guarantee.

### Future-Proof Loyalty Program: 3-yr Satisfaction Guarantee & Up to 55:1 Data Protection Deduplication Guarantee

The IDPA DP4400 has been added to the Dell EMC Future-Proof Loyalty Program, giving customers additional peace of mind with guaranteed satisfaction and investment protection for future technology changes.

Customers get a guarantee for data protection deduplication rates ranging up to 55:1, a 3-year satisfaction guarantee, predictable support pricing and hardware investment protection at no additional cost with the purchase of ProSupport agreement – only from Dell EMC.

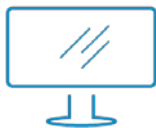
Dell EMC Integrated Data Protection Appliance Family

	DP4400	DP5300	DP5800	DP8300	DP8800
<b>Backup Ingest</b>	9 TB/hr	24 TB/hr	32 TB/hr	41 TB/hr	68 TB/hr
<b>Logical Capacity<sup>3</sup></b>	240 TB to 4.8 PB <sup>1</sup> Up to 14.4 PB <sup>2</sup>	340 TB to 6.5 PB <sup>1</sup>	960 TB to 14.4 PB <sup>1</sup> Up to 43.2 PB <sup>2</sup>	1.9 to 36 PB <sup>1</sup> Up to 108 PB <sup>2</sup>	6.2 to 50 PB <sup>1</sup> Up to 150 PB <sup>2</sup>
<b>Usable Capacity</b>	24 to 96 TBu <sup>1</sup> Up to 288 TBu <sup>2</sup>	34 to 130 TBu <sup>1</sup>	96 to 288 TBu <sup>1</sup> Up to 864 TBu <sup>2</sup>	192 to 720 TBu <sup>1</sup> Up to 2.16 PBu <sup>2</sup>	624 TBu to 1 PBu <sup>1</sup> Up to 3 PBu <sup>2</sup>

<sup>1</sup> Total capacity on active tier only

<sup>2</sup> Total capacity with cloud tier add-on for long-term retention

<sup>3</sup> Logical capacity based on 10x to 50x deduplication



[Learn more](#) about Dell EMC IDPA



[Contact](#) a Dell EMC Expert



[Learn more](#) about Future-proof Loyalty Program