

*Where every hour is happy.*



Modern working families are busier than ever as today's parents take on increasingly flexible and nontraditional work roles. So why shouldn't you have childcare that's just as flexible as you are? We know that every day brings new challenges and different needs, which is why we created Kids Camp.

Our play-based learning environment grows minds, builds character, and delivers fun – on your schedule. Drop your kids off for an hour, an afternoon, an evening, or all day, and only pay for what you use. With wholesome, delicious food served at meal and snack times, certified staff, and extended hours on weeknights and Saturdays, Lodgic Kids Camp takes care of your little ones while you take care of yourself.

*Welcome to Kids Camp. Providing the enriching care your kids deserve – and the flexibility you need.*

### THREE STIMULATING CLASSROOMS

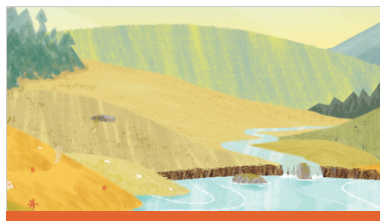
Our play-and-learn environments are tailored to three developmentally appropriate, age-based peer groups to grow minds, build character, and deliver fun.



#### NEST

**For ages 12 months to 2 years.**

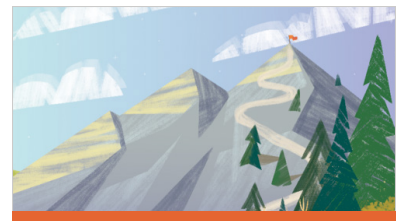
A joyful, nurturing, high-attention environment where your littlest ones will learn and play.



#### MEADOW

**For ages 2 years to 5 years.**

Social and emotional skills-building in a fun, hands-on environment your preschoolers will love.



#### MOUNTAINTOP

**For ages 5 years to 12 years.**

An enriching and fun-forward environment where your school-agers will thrive.

## Three ways for your kids to learn and play.

No reservations needed. No worries necessary. Simply enroll your kids, then choose between three easy ways to access Lodgic Kids Camp. **Drop off anytime, no matter which one you choose.** And with extended evening and Saturday hours, we're here when you need us.

### PAY AS YOU GO

#### ULTIMATE SIMPLICITY.

Pay for what you use, as you use it, with our Pay As You Go plan. Flat hourly, sibling, meal, and snack rates ensure there are no surprises. No monthly payments and no obligations.

**\$12** / HOUR  
1ST CHILD

Siblings | **\$5/hr**

Annual Enrollment Fee | **\$60**  
Meals | **\$5**  
Snacks | **\$3**

**EXTENDED HOURS,  
SIX DAYS A WEEK!**

**Monday – Thursday**  
6:30 am – 9 pm

**Friday**  
6:30 am – 10 pm

**Saturday**  
9 am – 10 pm

### MONEY-SAVING PACKAGES

#### FLEXIBILITY FOR LESS.

Purchase packages of hours in advance to benefit from lower rates with no monthly payments. The more you buy, the cheaper your hourly rate. Packages are valid for an entire year.

AS LOW AS **\$8** / HOUR  
1ST CHILD

First Sibling | **\$4/hr**  
Additional Siblings | **\$3/hr**

#### Packaged Hours, 1st child

25 Hours | **\$275** (\$11/hour)  
50 Hours | **\$500** (\$10/hour)  
75 Hours | **\$675** (\$9/hour)  
100 Hours | **\$800** (\$8/hour)

Annual Enrollment Fee | **\$60**  
Meals | **\$5** Snacks | **\$3**

### ALL-ACCESS MONTHLY

#### BEST VALUE.

With one low monthly payment, you can use Kids Camp for up to 12 hours a day, 6 days a week. Meals and snacks included. No annual commitment – pay monthly, cancel anytime. \* Limited spots available. Check with Kids Camp management for classroom availability.

AS LOW AS **\$4** / HOUR  
1ST CHILD

As low as  
First Sibling | **\$1.50/hr**

As low as  
Additional Siblings | **\$2.50/hr**

#### All-Access Monthly rates

1 Child | **\$900/month**  
2 Children | **\$1,500/month**  
3 Children | **\$1,900/month**  
4 Children | **\$2,300/month**

Annual Enrollment Fee | **\$60**  
Meals and Snacks Included

### CARING FOR OUR COMMUNITY

Tommy Moose has a big moose heart to help strengthen families and serve the community in Champaign-Urbana. Kids will, too, as they learn the six Big Moose Heart Values of **empathy, caring, respect, kindness, responsibility, and service.** Tommy can be found out in the community on fire trucks, in ambulances, and in police cars as part of the Tommy Moose First Responder Program. With Buy One Give One, when you buy a Tommy Plush toy, we donate one to a first responder to help comfort and console kids in crisis situations.



Get in touch for more information!

217.607.8184 [CHERIE.MONDRELLA@LODGC.ORG](mailto:CHERIE.MONDRELLA@LODGC.ORG) [in](#) [f](#)