



AKVA Borealis SurfLED

Robust, powerful and energy efficient LED luminaire that provides excellent surface light for the RAS facility.

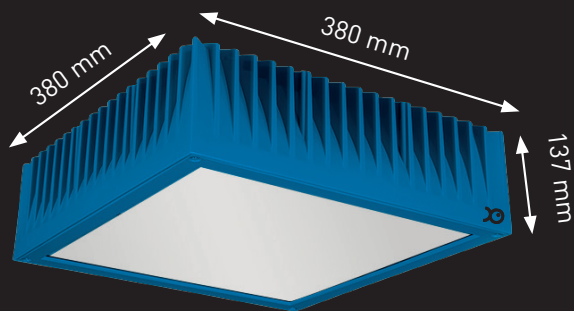
AKVA Borealis SurfLED is an efficient and versatile luminaire of quality materials and state-of-the-art LED technology. Blue and green LED lights manipulate day/season, control the smoltification process and help create an ideal environment in the RAS facility. Correct use of light provides production benefits and increased fish welfare.

Light is the most important seasonal signal for animals and plants, and an increasing day length is very important for controlling and completing the smoltification process. The fish produces melatonin based on light exposure, which in turn helps translate the light period signal into physiological responses. The fish is most sensitive to blue/green light.

The LED luminaire's front glass is made of heat tested tempered glass which is ultra-clear and coated with a special anti-reflective layer on both sides to achieve high light penetration. With its light control system and powerful light output, AKVA Borealis SurfLED is ideal for land-based fish farming.

STATE-OF-THE-ART: Modern LED modules produced in Norway.

QUALITY MATERIALS: Luminaire housing in die-cast aluminium with very low content of iron and copper (EN AB-44100). Comply with corrosion class C4.



SILVER COATED REFLECTORS: Quality aluminium reflector with high light output. Applicable with selection of narrow beam and medium beam reflector.

ROBUST SURFACE: Phosphor chromated to achieve a proper adhesion for the epoxy/polyester powder coating.

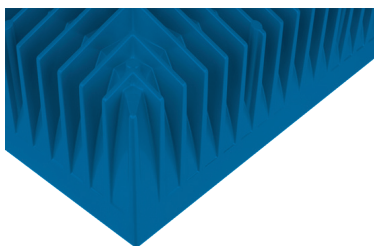
HIGH QUALITY FRONT GLASS: Supplied with 5mm front glass in heat soak tested tempered glass or with impact resistant acrylic front cover.

EFFICIENT HEAT MANAGEMENT: The choice of materials and the ingenious design secures an efficient heat management and influences the lifetime of the LED modules. Well suited for high ambient temperatures.

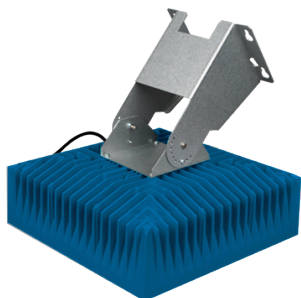
EASY CONNECTION: Delivered as standard with cable and IP68 plug.

AKVA Borealis SurfLED

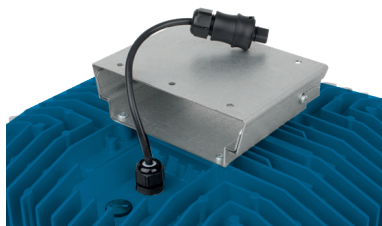
Details



Cooling ribs



Revolvable bracket



CPW

SPECIFICATIONS

Electrical data:	220 V / 240 V - 50/60 Hz - 130 W
IP classification:	IP66
Wavelength lights:	480-530 nm
Lumen:	Ca. 10.000
Ambient temp. (min/max):	-25 °C / 50 °C
MacAdam step:	3
Ballast/Driver:	DALI Dimmer
Number of ballast/driver:	2
Dimensions (l/w/h):	380 mm / 380 mm / 137 mm
Light source/optics:	LED/COB/Opal
Light distribution (up/down):	0/100
Reflector:	Sølvbelagt aluminium
Body material:	Aluminium
Connection Type:	Schuko CEE 7/7
Cable length:	8 meter
Usage:	"Flow-through" and RAS facilities
Net weight:	9,1 kilo
Certification:	CE ENEC