

## AKVA Subsea Feeder

An effective feeding system that provides increased growth and improved fish welfare.



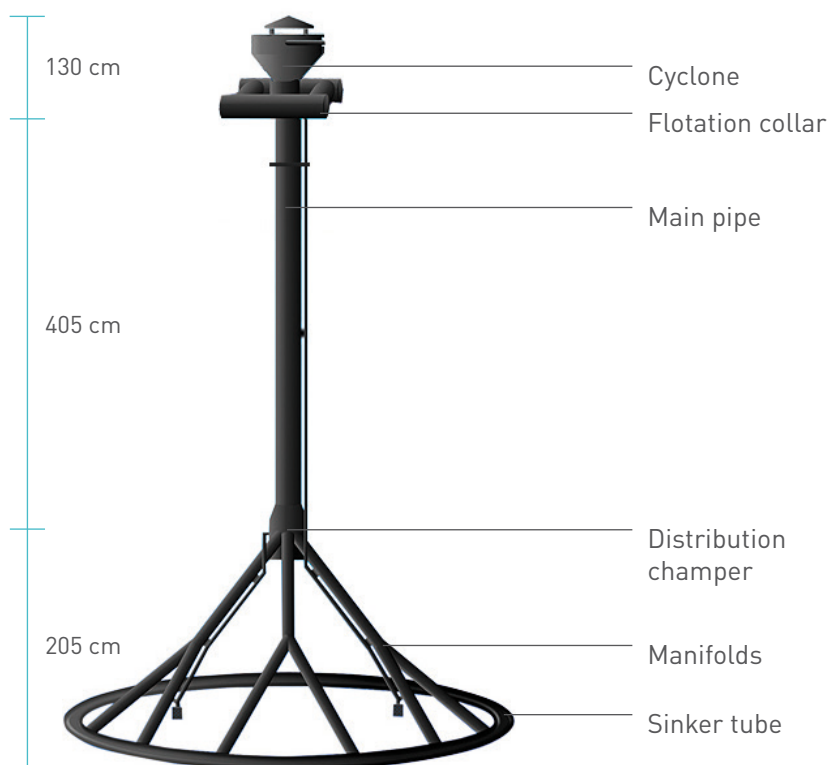
The cyclone is easy to place and move during maintenance and other necessary operations.



AKVA Subsea Feeder is an underwater feeding system that feeds fish at a depth of approximately eight metres. The feed is transported to the cages through a regular air hose. Water is added and passed down through a main pipe. The water is added by using a pump that draws deep water of good hygiene, in order to ensure the required speed of the feed. The feed is then spread using a dispersion unit of 17 meters in circumference with 12 feeding units so that the feed is spread about the cages in a satisfactory manner. The feeding rate is up to 50kg of feed per minute. Experience from using the system shows the need for bird netting is not required.

### Principal advantages

- Fast and efficient underwater feeding (50kg/min.)
- Good feed distribution
- Good hygiene
- Easy to operate and maintain
- No bird netting required



## Promising test results

The AKVA Subsea Feeder has been tested by the aquaculture company SinkabergHansen. Experience shows that the fish remain by the feeding point during daytime, resulting in good growth and fish welfare due to reduced sea lice infestation.

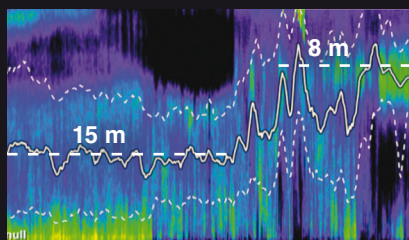
The system is also tested at two different facilities by Centre of Aquaculture Competence (CAC) in combination with AKVA Aurora SubLED Combi underwater lights with very good results.

## AKVA Subsea Feeder

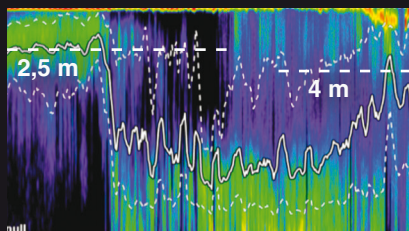
### Subfeeding tests

24-hour sonar plots from the CAC test facility showing fish behaviour. The first image shows how fish movements in a cage with subfeeding and underwater lights. The second image is from a cage with surface feeding.

#### Subfeeding



#### Surface feeding



The feeding system is developed and patented by Nærøysund Aquaservice and is sold, marketed and further developed by AKVA group.

### SPECIFICATIONS

Cyclone weight	63 kg
Total weight feeding unit	570 kg
Dispersion unit circumference	17 m circle / 5.5 m dia.
No. nozzles	12
Max. feeding rate	50 - 60 kg/min
Pellet sizes wo/pump	8 mm >
Length	130 + 405 + 205 cm
Material	Polyethylen (PE)
Energy	30% less air flow – hence, reduced use of energy (50%)
Pellet crush	Reduced by approx. 50 %
Certificate	In accordance with NS 9415
Wave height	3.0 Hs