

REDLINE EXPOSED



TECHNOLOGY FOR SUSTAINABLE BIOLOGY

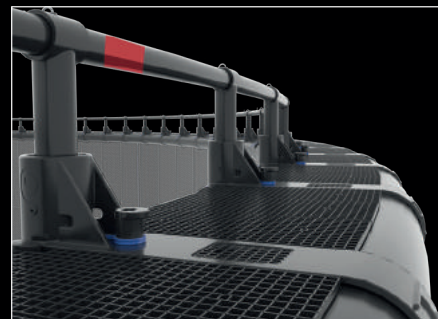
AKVAGROUP™

AKVA REDLINE

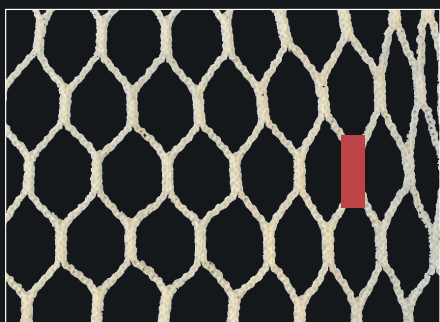
PEN

Polarcirkel 630 & 500-R

The Polarcirkel pens are made from PE raw materials especially suited for the dynamic loads of the sea, and are available in a wide range of models, shapes and sizes to suit individual needs. The Polarcirkel 500-R comes with HDPE bracket moulds for robotized moulding and with improved HSE.



NET



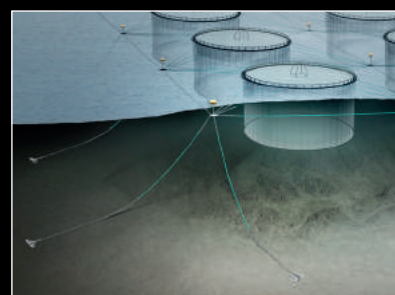
Culmarex Net

Culmarex Net is developed by Egersund Net and Culmarex with design elements from Bridgestone. The net is sewed by hand with a very robust twine with hexagonal mesh and has been used in very exposed conditions for over 20 years. A flap connected to a floating line 1m below the waterline makes the net flexible and provides protection even if the pen collapse.

MOORING

Mooring System by Egersund Trading

We can offer an innovative mooring connector system that simplifies the mooring process and improves the structural strength of the pen. The system is well suited for exposed locations, making sure the forces are equally spread over the entire farm.



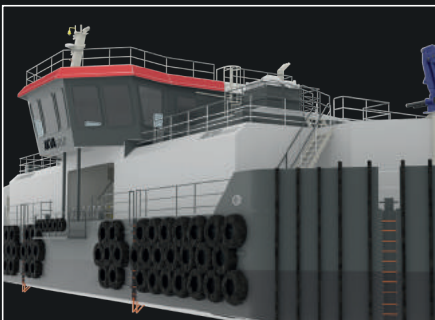
BOAT

Polarcirkel 1050 (cabin), 860 (cabin) & 790 (open)

Polarcirkel RBBs (Rigid Buoyancy Boats) are self-bailing and have rigid pontoons filled with polystyrene. Combined with 21 degrees V-shaped hull, this design makes a virtually unsinkable boat with unique stability and excellent seaworthiness. The Polarcirkel 1050 cabin workboat is certified for 6-meter significant wave heights. The Polarcirkel 790 (open workboat) and 860 (cabin workboat) are certified for 4-meter significant wave heights.



BARGE



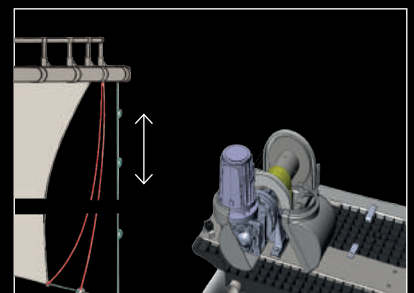
AC 600 PVDB & AC 800 PVDB

AC 600 PVDB and AC 800 PVDB feed barges are perfect models for rough and exposed locations with challenging weather conditions. The 6m significant wave height certified barges are delivered complete, fully self-contained with Akvasmart CCS Feed Systems, generator(s), control room, living quarters, safety equipment and all other optional equipment installed, such as integrated mort silage systems, camera- and sensor systems.

PLS 500

Polar Lifting System, PLS 500

The PLS 500 system relies on eight on-cage winch units to raise and lower sinker tubes and nets. This not only increases net tension and therefore repels predators but also makes the pens more stable – perfectly suited for high-energy locations.



WHE

When nature roars
Our products stand



Polarcirkel 630 & 500-R

The Polarcirkel pens are made from PE raw materials especially suited for the dynamic loads of the sea. The pens are superior in terms of structural strengths, durability and UV resistance. Extensive use of PE (Polyethylene) in the brackets eliminates corrosion, minimizes expensive and difficult maintenance, and substantially increases pen lifespan compared to steel brackets.



Nets from Egersund Net

Egersund Net deliver superknot, hexagonal netting, standard knotless netting as well as a variety of knotted netting. The netting is manufactured of Nylon P6 or Dyneema filaments with a breaking strength of up to 220kg. Development and testing has resulted in a net with characteristics such as reduced abrasion, giving less risk of escapes. Proper elongation allows the structure to move in line with the forces of nature.

N ONLY THE BEST EQU

levels, you need equipment you can trust. AKVA group has been a pioneer in this field. Our products are tested under extreme conditions around the world and have the reputation of being the best.



Polarcirkel 1050, 860 & 790

The Polarcirkel 1050 Workboat is a tailor made workplace with many practical solutions and smart details. The boat has double pontoons manufactured from 500 mm PE tubing and three pressure-tested chambers. This ensures very good buoyancy. The hull is self-bailing and the rigid pontoons are filled with polystyrene, making them virtually unsinkable. All Polarcirkel boats are designed according to the client's needs.



Moorings for fish farming

Egersund Trading develops mooring systems for fish farming. The system is designed to ensure the forces are evenly distributed.



EQUIPMENT IS GOOD ENOUGH

...er and technology driver in the global aquaculture industry for more
...rough the years become increasingly optimized in terms of safety and



AC 600 PVDB & AC 800 PVDB feed barge

The AC 600 PVDB feed barge is developed especially for exposed sites and is dimensioned for significant wave heights of 6 meter. Its double bow and V-shaped hull makes the barge stand out from other models in the market, ensuring superior stability even in rough weather. Smart details such as built-in feed selectors and shelter deck helps create safe operational conditions onboard.

From Egersund Trading

...deliver sustainable high-quality mooring
...rms, complete with mooring lines and
...especially designed for your site, making
...qually spread over the entire farm.




OUGH

than 45 years.
durability.

for
nts
he
ng
ch
fe



AKVA GROUP™



"THE GREATEST
AMOUNT OR LEVEL
OF SOMETHING THAT
IS POSSIBLE"

Redline has been used since the 1970s to denote a limit beyond which someone must not go without facing severe consequences. It suggests the idea of a physical boundary marking the limits between acceptable and unacceptable and is related to expressions such as 'cross a line'