



imageFORMULA

Canon

Delighting You Always

COMPACT SCANNING SOLUTIONS NOW WITH WIRELESS FEATURE

DR-C225 DR-C225W

Ideal for any office environment with its innovative compact upright design and new wireless feature to deliver high-quality results.

Win&Mac
Hybrid



Business **Can** be simple

A COMPACT, HIGH-SPEED & HIGH-RESOLUTION QUALITY SCANNER SOLUTION NOW COMES WITH WIRELESS OPTION

Sporting a unique and innovative upright design, the new imageFORMULA DR-C225 and DR-C225W* leaves you more space on the desktop while still performing smooth scanning operations. On top of a high-speed scanning of 25 ppm** in either color or monochrome, the scanner's document feed capably handles various types of document media. The new Capture OnTouch feature also improves workflow and makes an easy task of day-to-day scanning.

* DR-C225W is only available in certain countries.
 ** A4, Portrait, 200dpi (simplex)

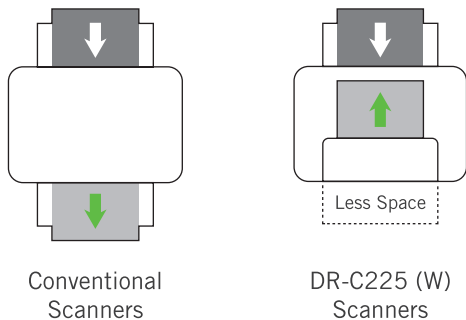


**DR-C225
DR-C225W**

A COMPREHENSIVE RANGE OF POWERFUL FUNCTIONS

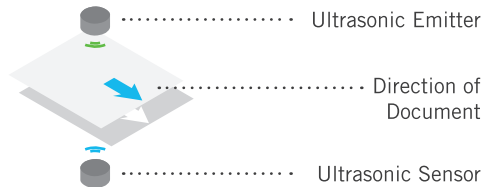
AN INNOVATIVE SPACE-SAVING UPRIGHT DESIGN

Once a document is fed into the scanner, it follows a u-turn path and then comes out at the front section of the scanner's main unit. This compact design eliminates the need for space at the front of the scanner for document delivery, thus saving quite a lot of space. Switching to a straight path makes it possible to scan business cards or thicker documents.



RELIABLE DOUBLE FEED DETECTION

As documents are being fed into the scanner, its upper sensor transmits ultrasonic waves that are received by its lower sensor. During feeds of multiple documents, if a double feed is detected, the document feed is automatically paused, so there is no risk of data loss during scanning.



FLEXIBLE FACE-UP FEEDING

When scanning, users will find it easier to position their documents the right way up with the printed side facing them. This allows users to check the scan preview on the display screen and confirm the correct order, especially when scanning multiple sheets.

HIGH-SPEED SCANNING

Simplex (ppm) at 200 dpi		Duplex (ipm) at 200 dpi	
B&W or Grayscale	Color	B&W or Grayscale	Color
25	25	50	50

ENHANCED EASE OF USE AND OPERABILITY

CaptureOnTouch



Now More Intuitive And Convenient

The screen is now laid out panel-style with large icons for easier operation and greater legibility. The items on the setup screen have been scaled down for a simpler design. Two scanning methods are now available to fulfill a variety of needs such as ad hoc and daily scanning. Besides 'Standard Scanning' where scanning mode and output mode can be separately configured, there is also 'Scanning Shortcut' where the specific scanning mode and output method are preconfigured, allowing for one-click operation. It is also now possible to edit scanned image, eliminating the need to redo a scan if the scanned data differs from the image that you want to save. You can even scan to a total of three outputs concurrently.

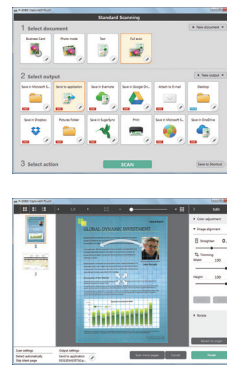
Enhanced Cloud Connectivity

Connection to cloud-based services is now even more comprehensive. In addition to Evernote, SharePoint and Google Drive, scanning destinations have been expanded to include SugarSync, OneDrive and Dropbox.

CaptureOnTouch MOBILE



CaptureOnTouch Mobile is scanning software for smartphones and tablets that can be used when a WU10 optional wireless unit is connected to the scanner. Using this software, you can easily scan images from a wirelessly connected scanner, and then upload them to a cloud service. Available through App Store and Google Play.



Desktop



Mobile

WIRELESS FEATURE FOR EXPANDED POSSIBILITIES

The imageFORMULA DR-C225 comes equipped with Wi-Fi connectivity for added compatibility with a number of compatible devices such as PC, smartphones and tablets that can use the scanner without need for cables. The DR-C225W lets users scan and share scan data across multiple devices.



1-TO-1 CONNECTION (AP MODE)

The scanner connects to PCs, smartphones, and tablets on a 1-to-1 basis in this mode. Detection of the scanner and connections are performed from the other device, allowing you to scan images with your smart device.



CONNECTING VIA WIRELESS ACCESS POINT (STATION MODE)

This mode connects the scanner to PCs, smartphones, and tablets via a wireless access point, and allows you to share the scanner among multiple devices. Using a WPS-compatible access point makes the network configuration process that is required for using this mode quick and easy.

VERSATILE IMAGE PROCESSING OPTIONS

Full Auto Mode — Full Auto Mode is available and helps to automatically determine the color mode, page size, resolution, and text orientation based on the contents of the document. This mode allows users to scan documents with varying types of pages under conditions that best suit each type. The Full Auto Mode also includes the Skip Blank Page function for efficient scanning of only the necessary pages.

Auto Color Detection — This function automatically decides which documents of a mixed batch should be saved in color, grayscale or black and white, so that users will not have to go through the hassle of separating color and black and white pages in a document prior to scanning.

Advanced Text Enhancement
Original image of a document page is shown. The processed image shows enhanced text clarity and contrast.

Auto Size Detection
Documents of different sizes are shown. The processed image shows that the document size is detected and adjusted to fit the scanner bed.

Skip Blank Page
A stack of documents is shown, including a blank page. The processed image shows only the content pages, with the blank page skipped.

Folio Mode
A document is shown being scanned as a folio. The processed image shows the document spread out as if it were a book.

Deskew
A skewed image of a document is shown. The processed image shows the document straightened with an angle and contents of the document.

Character Emphasis
Original image of a document page with text. The processed image shows the text with enhanced character emphasis and readability.

OTHER SOFTWARE



Presto! BizCard lets you scan business cards to convert and organize important contact information into a searchable database.



Evernote is a cloud-based data management application. The CaptureOnTouch software comes equipped with an option to send and store data (scanned images, photos, memos etc.) to the Evernote server.



OmniPage converts original paper documents into editable electronic files through OCR.



PaperPort is a file management application renowned for its intuitive and user-friendly graphic interface, making it easy to store, organize and retrieve your digital documents.



eCopy PDF Pro Office instantly creates 100% industry-standard, universally viewable PDF files, and converts static PDF documents into editable files and useful information. eCopy PDF Pro Office allows you to attain the flexibility of a universal document format for greater productivity and seamless exchange of information.



Presto! PageManager promptly puts your documents on the computer screen where they can be easily arranged and sorted. In addition to the above applications, the DR-C225 / DR-C225W can be used with a wide variety of ISIS- or TWAIN-based scanning software available on the market.

DR-C225 / DR-C225W Specifications

Type	Desktop sheet-fed scanner		
Document size	Plain paper	U-turn path	Width: 50.8 to 216 mm, Length: 70 to 356 mm
		Straight path	Width: 50.8 to 216 mm, Length: 53.9 to 356 mm Use Long Document mode to scan documents up to 3,000 mm long.
	Business card	50 x 53.9 mm or larger. Vertical feeding only.	
Document thickness	Plastic card	53.9 x 85.5 mm (ISO standard). Embossed cards can be scanned.	
	Plain paper	U-turn path	52 to 128 g/m ² (0.06 to 0.15 mm)
	Business card	Straight path	40 to 209 g/m ² (0.05 to 0.25 mm)
Plastic card	300 g/m ² (0.35 mm or less)		
Document feeding	Automatic sheet feeding		
Feeding capacity	6 mm stack (including curls) or 30 sheets of 80 g/m ²		
Scanning element	CMOS CIS		
Light source	LED (red, green, and blue)		
Scanning side	Simplex / Duplex, Skip Blank Page, Folio		
Scanning modes	Black and white, Error diffusion, Advanced Text Enhancement, Advanced Text Enhancement II (for Windows only), 256-level grayscale, 24-bit color		
Scanning resolutions	150 x 150 dpi, 200 x 200 dpi, 300 x 300 dpi, 400 x 400 dpi, 600 x 600 dpi		
Scanning speed *1	Simplex	25 ppm	
(A4/LTR, portrait, 200dpi)	Duplex	50 ipm	
Interface	Hi-speed USB 2.0		
Software	Windows	ISIS / TWAIN driver, CaptureOnTouch, Presto! BizCard, OmniPage, PaperPort, eCopy PDF Pro Office, Evernote *2	
	Mac *3	TWAIN driver, CaptureOnTouch, Presto! BizCard, Presto! PageManager, Evernote *2	
Dimensions (W x D x H)	300 mm x 220 mm x 156 mm with the feed tray closed		
Weight	DR-C225: Approx. 2.7 kg, DR-C225W: Approx. 2.8 kg		
Power requirements	AC100 to 240 V (50/60 Hz)		
Power consumption	DR-C225	Scanning: 12.8 W or less, Sleep: 1.8 W or less, OFF: 0.5 W or less	
	DR-C225W	Scanning: 15.6 W or less, Sleep: 4.4 W or less, OFF: 0.5 W or less	
Operating environment	Temperature	10°C to 32.5°C	
	Humidity	20% to 80% RH	
Options / consumables	Flatbed Scanner Unit 101/201 (DR-C225 only), Exchange Roller Kit (feed roller and retard roller)		
Wireless standard	Wireless standard	IEEE802.11b/g/n (2.4 GHz only)	
	Frequency	2.4 GHz band	
	Transfer method	IEEE802.11b: DS-SS system, IEEE802.11g: OFDM system	
	Data rate *4	IEEE802.11n: MIMO-OFDM system IEEE802.11b: Up to 11 Mbps, IEEE802.11g: Up to 54 Mbps IEEE802.11n: Up to 300 Mbps	
Basic wireless LAN specifications (DR-C225W only)	Security	WPA-PSK (TKIP/AES), WPA2-PSK (TKIP/AES)	
	Easy setting	WEP (64/128 bit)	
	Connection modes	WPS	

*1 Actual scanning speed may vary depending on your system configuration and PC. *2 Installed via Internet connection. *3 Requires Mac OS X 10.4.11 or later. *4 Varies according to environmental conditions. Specifications are subject to change without notice.



ENERGY STAR and the ENERGY STAR mark are registered U.S. trademarks.



Delighting You Always

SOUTH & SOUTHEAST ASIA REGIONAL HEADQUARTERS

Canon Singapore Pte. Ltd. *
1 HarbourFront Avenue #04-01, Keppel Bay Tower, Singapore 098632
Tel: +65-6799 8888 | Fax: +65-6799 8882 | www.canon-asia.com | www.canon.com.sg

CANON SALES SUBSIDIARIES & BUSINESS PARTNERS

Bangladesh:

Flora Limited
Adamjee Court Annex-2 (4th Floor),
119-120 Motijheel Commercial Area
Dhaka 1000, Bangladesh
Tel: 880-2-716-2742-46 / 225
Fax: 880-2-955-0030
www.floralimited.com

J.A.N Associates Ltd.

Surma House
House - 25, Road - 5
Dhanmondi R/A, Dhaka-1205
Bangladesh
Tel: +880-2-861 1444 / 9660601 /
8624102 / 8624292
Fax: +880-2-8610410

Brunei:

Interhouse Company
No. 5-7 Bunut Jaya Complex,
Spg 574 Jalan Tutong BF1320,
P.O. Box 423, Seri Complex, Bandar
Seri Begawan BA 1779, Brunei
Darussalam
Tel: 673-2-653-001
Fax: 673-2-653-003

Cambodia:

Royal Cambodia Co., Ltd
#437 Preah Monivong Blvd, Phnom
Penh, Kingdom of Cambodia
Tel: 855-23-428955
Fax: 855-23-722961

Hong Kong:

Canon Hongkong Co. Ltd
19F, The Metropolis Tower,
10 Metropolis Drive,
Hungghom, Hong Kong
Tel: 852-3191-2388
Fax: 852-2369-3800
www.canon.com.hk

India:

Canon India Private Limited
7th & 8th Floor, Tower B
Building # 5, DLF Epitome,
DLF Phase III Gurgaon - 122002
Tel: 91-124-416 0000
Fax: 91-124-416 0011
www.canon.co.in

Indonesia:

PT DataScrip
Jl. Selaparang Blok B-15 Kav.9
Kompleks Kemayoran,
Jakarta 10610, Indonesia
Tel: 62-21-654515
Fax: 62-21-6544811-13
Call Center: 62-21-29226000
www.datascrip.com

Malaysia:

Canon Marketing (Malaysia) Sdn Bhd
Block D, Peremba Square, Saujana
Resort Section U2, 40150 Shah Alam,
Selangor Darul Ehsan, Malaysia
Tel: 60-3-7844 6000 / 7845 0055
Fax: 60-3-7844 6196 / 6198
www.canon.com.my

Maldives:

Simdi Company Pvt Ltd.
G. Manaam Building, 2/1 Neeloafaru
Magu, Male' 20-129, Maldives
Tel: 960-333 4421
Fax: 960-333 4424

Myanmar:

Myanmar Golden Rock
International Co. Ltd (Showroom)
Unit 7-8, Aung San Stadium (South
Wing) Mingalar Taung Nyunt
Township, Yangon
Tel: +95 1243036 / +95 1243038
Fax: +95 13933438
Email: sales@mgr.com.mm

Nepal:

International Electronics
Concern (P) Ltd
Kha 14, 1st Floor, Haratibhawan
Putalisadak, Ramshah Path,
Kathmandu, Nepal, P.O. Box 12588
Tel: 977-1-442 1991
Fax: 977-1-442 1909

Pakistan:

Shirazi Trading Company (Pvt.) Ltd
8th Floor, Adamjee House, I.I.
Chundrigar Road,
Karachi 74000 Pakistan
Tel: 92-21-3241 (7659),
(7737) or (7746)
Fax: 92-21-3241 (7747),
(3242 0417) or (3242 0418)
www.shirazitradng.com.pk

Philippines:

Canon Marketing (Philippines), Inc.
7th Floor and Ground Floor
Commerce and Industry Plaza,
Campus Ave. Cor. Park Ave.,
McKinley Hill, Fort Bonifacio,
Taguig City
Tel: 632-884-9000
Fax: 632-556-1456
www.canon.com.ph

Sri Lanka:

Metropolitan Office (Pvt) Ltd
12, Magazine Road
Colombo 08, Sri Lanka
Tel: 94-11-470 0200
Fax: 94-11-470 0267

Thailand:

Canon Marketing (Thailand) Co. Ltd
No.98 Sathorn Square Office Tower,
21st -24th floor, North Sathorn Road,
Silom, Bangrak, Bangkok. 10500
Tel: 66-2-344 9999
Fax: 66-2-344 9960
www.canon.co.th

Vietnam:

Canon Marketing Vietnam Co. Ltd.
10th & 11th Floor, President Place,
93 Nguyen Du street, District 1,
Ho Chi Minh city, Vietnam
Tel: [84-8] 38 200 466
Fax: [84-8] 38200 477
E-mail: cvro_enq@canon.com.sg

Branch of Canon Marketing

Vietnam Co. Ltd (Hanoi)
11th Floor, CharmVit tower,
117 Tran Duy Hung Street,
Trung Hoa ward,
Cau Giay District, Hanoi
Tel: [84-4] 37711 677
Fax: [84-4] 37711 678

* DR-C225W only available in these countries

This document is for information purpose only and the contents are subject to change without notice. Product options, name and availability may vary by regions. Nothing in this document should be construed as a warranty. We expressly disclaim any liability or contractual obligations with respect to this document.

Canon, imageFORMULA, Business can be simple are trademarks of Canon and/or its affiliates. Other names may be the trademarks of their respective owners.

Dealer's Stamp

[0186W459] © 2014 Canon Singapore Pte. Ltd.
All rights reserved. Printed in Singapore.