

Océ LabelStream 4000 series

TAILORED LABEL CONVERSION

BASED ON INKJET DNA



NEW

Canon

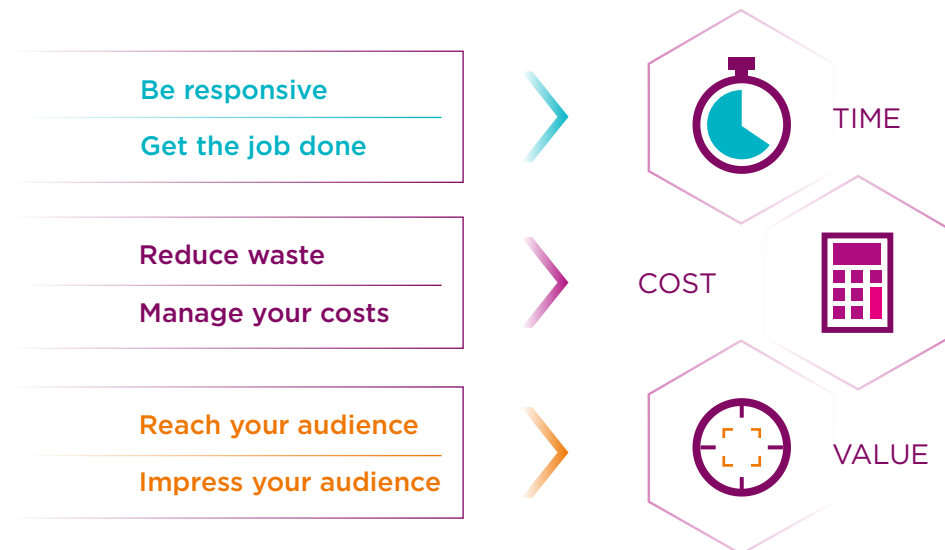
Océ LabelStream 4000 series

TAILORED LABEL CONVERSION BASED ON INKJET DNA

Adapt to **CHANGING MARKET DYNAMICS**

Digital printing for labels and packaging is the answer to fundamental trends in the packaging value chain such as decreasing run lengths, waste and cost reduction, or reduced turnaround time for faster campaign execution. Océ LabelStream offers minimal set-up times, combined with a unique capability to individually change contents and artwork, whilst enabling shortest possible time to market.

To be successful in today's challenging market environment you'll need to deliver an outstanding performance along the three major business dimensions: Time, Cost and Value.



Embrace the **POSSIBILITIES**

The Océ LabelStream 4000 series is an industrial-scale UV inkjet conversion platform for self-adhesive labels and selected flexible packaging applications. Rapid job change over, customized content and inline finishing and embellishment will give brands a boost while meeting the most demanding supply chain challenges.

The Océ LabelStream 4000 series will help you turn challenges into opportunities.

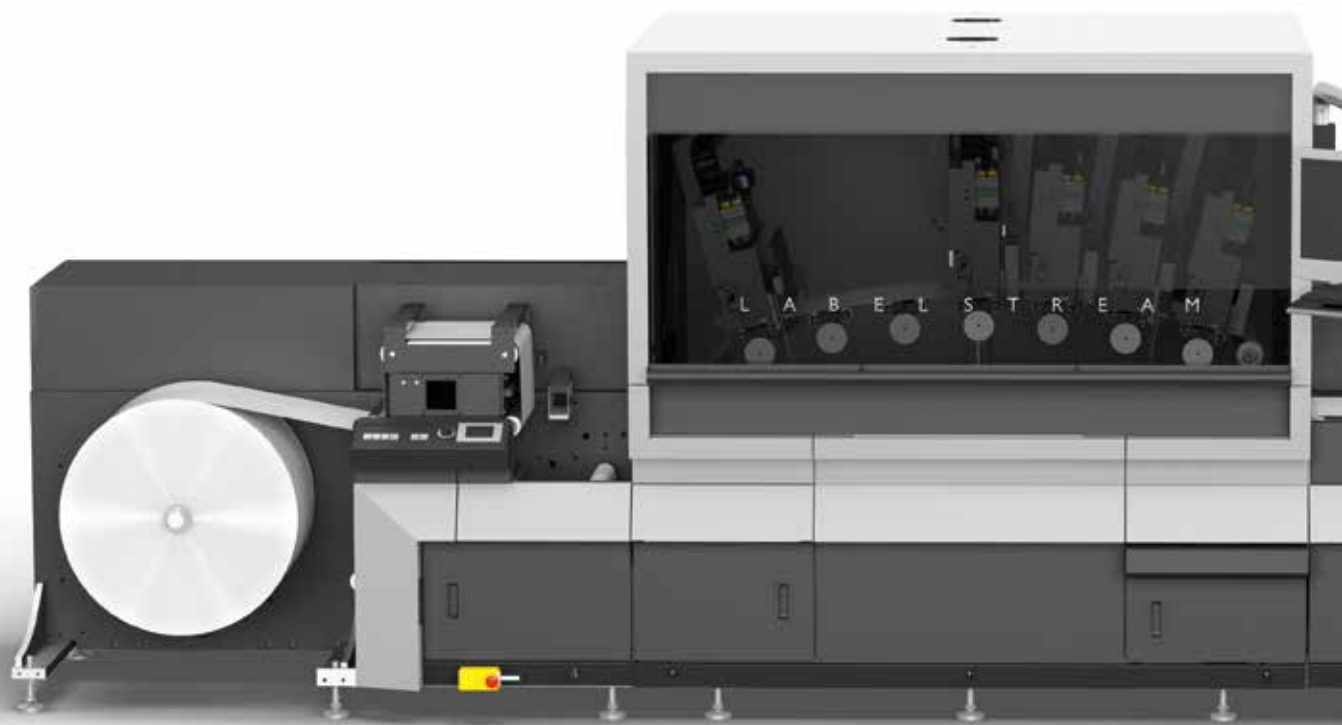
- Configure the system to your needs
- Benefit from exceptional productivity
- Deliver top league print quality including outstanding digital White
- Achieve greater efficiency with minimized make-ready times
- Add value with customized content and targeted messaging
- Enjoy Canon's world class service

UV inkjet

Latest Xaar 2001 UV Inkjet printheads with 720 x 600 dpi and variable dot size (CMYK and optional white) for excellent reproduction of fine details, smooth tones, vibrant color and solid areas.

Industry-leading productivity

Two print speeds of 48 m/min and 68 m/min combined with two print width of 330 mm (13") and 410 mm (16") correspond to a productivity range of 950 – 1,672 sqm/hr.



Flexible media handling

A wide range of standard label stocks including PP, PE, PET plus select special substrates. From 40 to 450 microns on standard configuration.

Seamless integration and automation

Single-point of operation, servo-drive technology, auto-registration and impression setting plus inspection cameras enhances the usability while reducing make-ready times.

Modular toolbox

From a standalone digital press to a full hybrid configuration – custom mix of digital, flexo and finishing, seamlessly integrated.

Excellent digital White

> 80% opacity white in one-pass at standard press speed.

Workflow integration

Océ LabelStream connects to existing workflows ensuring coexistence and easy integration.



Service quality

Each unit comes with the confidence of working with the world's number one vendor for inkjet production technology. Canon's world class service includes 24/7 availability, remote service assistance and outstanding parts logistics.

One platform, **LIMITLESS OPPORTUNITIES**



UV inkjet core with many expansion options: from a standalone digital press to a full hybrid configuration with a mix of flexo, digital, embellishment and finishing modules. This flexibility allows a tailored label conversion solution for any demand.

Digital Standalone Press

- + 330 mm or 410 mm
- + Unwinder and rewinder
- + CMYK + optional white
- + Central control system
- + Web cleaning
- + Corona treatment
- + Edge guide, web tension

Digital Press with Inline Finishing

Digital standalone press +

- + Semi rotary die cutting
- + Slitting
- + Sheeting
- + Dual rewind

Digital Hybrid Press

Digital inline finishing +

- + Register control and inspection
- + Flexo color units
- + Turnbar
- + Delam/relam
- + Cold foil
- + Lamination
- + Varnish

THE CANON INKJET DNA as basis for your success

There is no shortcut to true inkjet DNA. It grows and evolves with each installation of more than 1,500 high-volume inkjet printing systems in the field. Being the worldwide No. 1 in inkjet webfed printing Canon identified the key factors of our customers for a successful digital printing business.



Leading Technology

Canon can build on 30+ years of experience in developing and manufacturing high-quality industrial inkjet printing equipment utilizing different technologies for different needs. We are sure to have the right one for you.



End-to-End Solutions

Canon as a one-stop-shop for the entire production line will help you assess your current workflow and find the right solutions to meet your application needs. Dedicated project managers will guarantee a smooth system implementation.



First-Class Service

Downtime often isn't an option. Océ's award-winning service team uses preventive maintenance and remote support to minimize downtimes. A service technician is here for you, 24 hours a day, 7 days a week, across the globe.



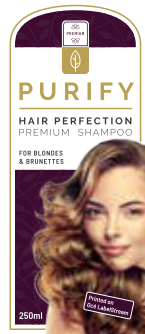
Business Development

Canon will help you tailor your business model to unlock the full potential of the digital technology and separate yourself from the competition.

Sample APPLICATIONS



Personal Care



Pharma



Beverages



TECHNICAL DATA

Océ LabelStream 4000 series

Printmodes

High Definition	720 x 600 dpi at 3 grey levels at 48 m/min
Standard Graphics	720 x 360 dpi at 4 grey levels at 48 m/min
High Performance	720 x 360 dpi at 3 grey levels at 68 m/min

Digital print width 330 mm | 410 mm

Flexo print width 420 mm

Web width 430 mm

Productivity 950 – 1,672 sqm/hr

Printing technology Single pass UV inkjet
Xaar 2001 hybrid side shooter® with variable dot size and greyscale technology

Ink/colors UV CMYK, optional white

Substrate thickness 40 – 450 µm standard range
40 – 600 µm extended range

Substrate type Backed liners: e.g. PE, PP, PVC, PET, paper (uncoated, coated)
Linerless/unsupported: e.g. Kraft, carton, BO-PET, BO-PP, metallised film

For information and services, visit us at:

www.oce.com