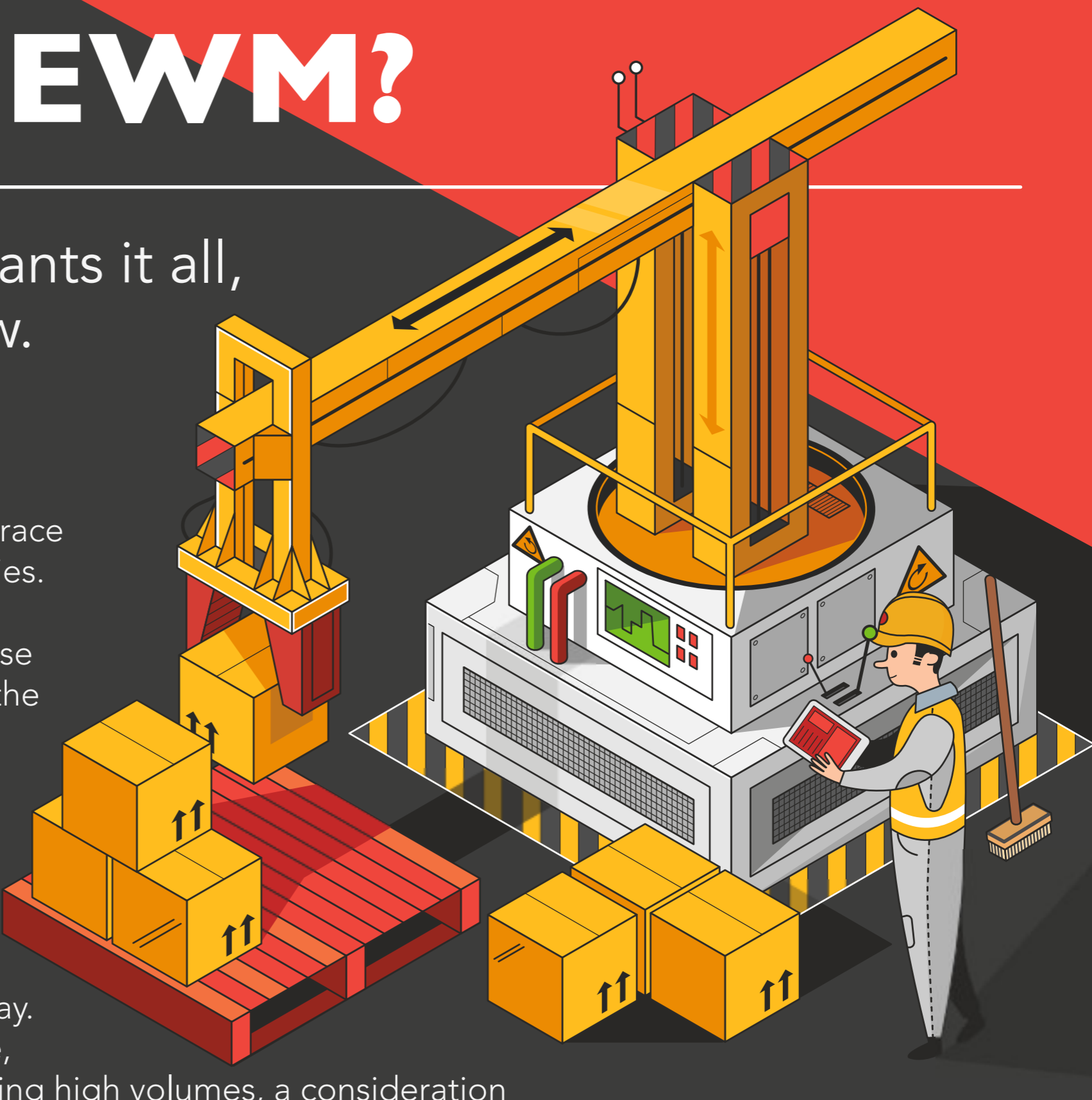


WHAT'S THE VALUE IN SAP EWM?

Today's consumer wants it all, and they want it now.

This dramatic shift in expectations has put enormous pressure on supply chain management to embrace change and adopt new technologies. Leaders in the field are building elaborate, hyper-efficient warehouse systems that are accommodating the increasingly demanding customer.

Drones, robotics and automated systems are optimising every step of the process; boosting productivity, reducing costs and avoiding human error along the way. Efficiency is the name of the game, and for complex businesses handling high volumes, a consideration must be made when looking at their current warehouse management technologies.



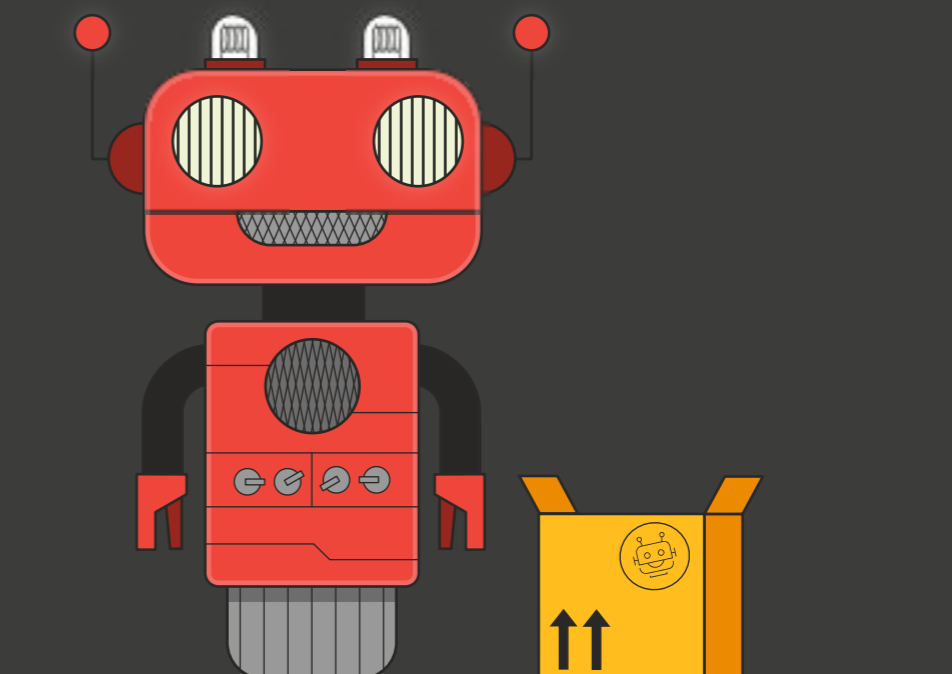
SAP EWM

The EWM solution can help optimize warehouse processes, including resources and tasks – maximising efficiency and reducing overall costs. Development of EWM has facilitated the customer mind shift from managing stocks to optimizing operational processes.



Productivity:

SAP EWM offers a higher level of flexibility in terms of the design of the warehouse and processes



Automation:

SAP EWM is designed to allow the Warehouse Management System to enable and control automation



Benefits:

All the activities related to the warehouse are monitored by SAP EWM, along with utilizing all available resources and managing at an efficient rate.

SAP EWM provides insight and visibility to warehouse managers by assigning tasks, maintaining warehouse orders and optimising these processes, providing a platform for growth.

Optimizes resources and minimizes travel distance in the warehouse by up to 70%

Optimized warehouse processes



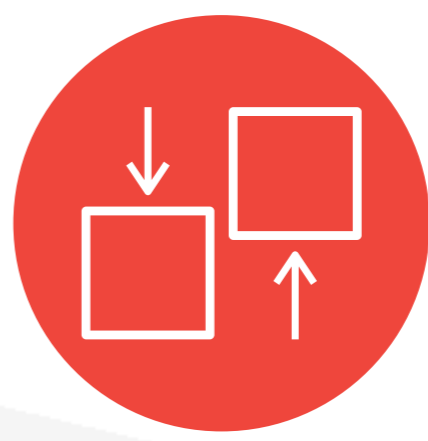
Resource & labour management



Picking waves



Cross docking



Slotting & re-arrangement



Task Interleaving

GET STARTED: **FAST EWM**

automate key warehouse processes, increase productivity and drive value from innovation.

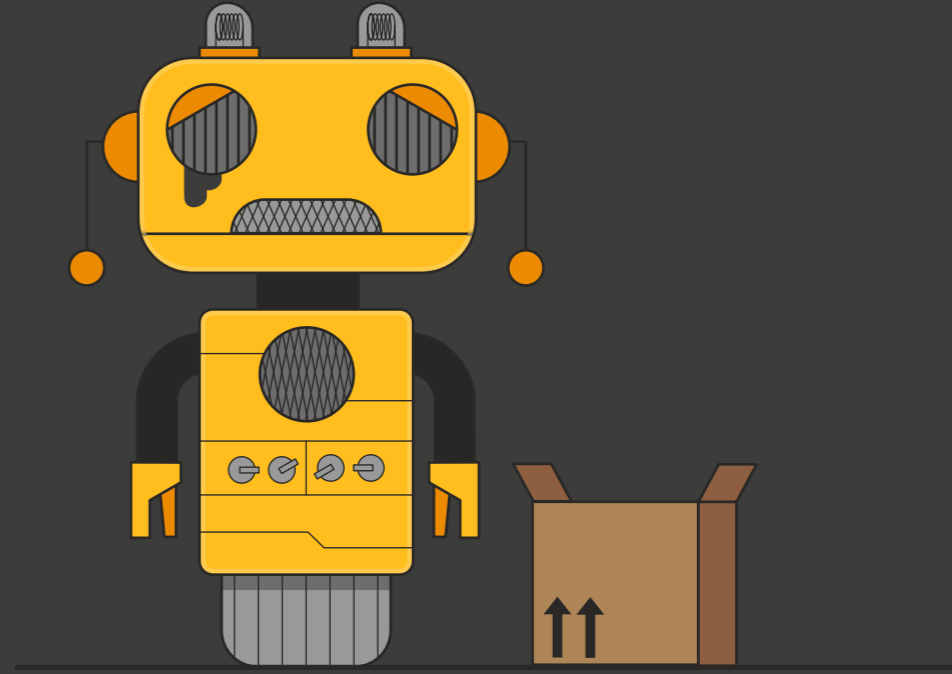
SAP WM ECC

SAP WM is a transactional tool which is used for managing stocks and processing movement of goods from A to B. It is a legacy tool which doesn't allow integration and by design, it is not future-proof.



Productivity:

SAP WMS is not that flexible in the design of the processes and warehouses.



Automation:

SAP WMS do not have the functionality to manage and control automation.



Benefits:

SAP WM is equipped to manage basic warehouse processes and dealing with stock in a structured and simplified manner.

SAP WMS helps companies to tackle challenges related to managing inventories in the warehouse in a systematic manner. However, there is limited integration into automated warehouses, so it is better suited to a simple, non-complex operation that doesn't need to scale.

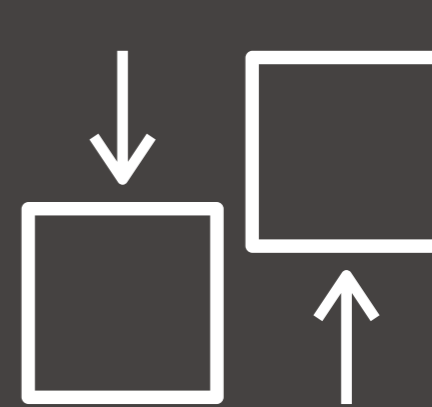
WHY MAKE THE MOVE NOW?



Current SAP ECC WMS will not be developed or enhanced beyond its existing capabilities.



Handle larger volumes of data at a faster pace, with the ability to utilise simulation and predictive analytics.



Optimise warehouse activities with inbuilt industry best practice applied.

CREATING A SMART WAREHOUSE



Real-time truck planning and Automated Yard Management.



Geo Positioning and travel distance calculation via connected forklifts.



Workload prediction for warehouse tasks using machine learning.

GET STARTED: **FAST EWM**

automate key warehouse processes, increase productivity and drive value from innovation.