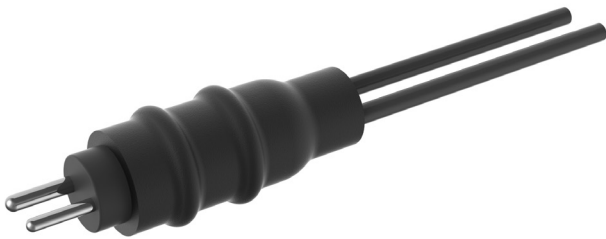


KD503 & KD503R

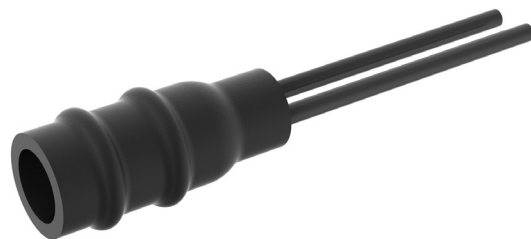
Secondary Connector Kits

FAA AC 5345-26
L-823, Class B

KD503-series (plug)



KD503R-series (receptacle)



For two single wires, Styles 4 and 11

EFLA's Secondary connectors are designed and manufactured for top level circuit protection and performance between the secondary output of airfield isolation transformer and airfield lighting equipment.

The connector kits are packed and delivered separately in plug and receptacle kits. Each kit contains all the necessary parts for assembly of the the secondary wires, resulting in a water tight post-installation connection. Nominal Rating: 20 A and 600 V.

Dimensional data

EFLA Type	Type	Conductor Size	AWG	Wire Diameter
KD503	Plug	1.5-2.5 mm ²	16-14	2.8-4.0 mm, 0.110-0.157"
KD503.1	Plug	4.0-6.0 mm ²	12-10/8	3.8-5.5 mm, 0.149-0.216"
KD503.2	Plug	4.0-6.0 mm ²	12-10/8	2.8-3.4 mm, 0.110-0.133"
KD503.3	Plug	4.0-6.0 mm ²	12-10/8	5.0-8.0 mm, 0.196-0.314"
KD503/R	Receptacle	1.5-2.5 mm ²	16-14	2.8-4.0 mm, 0.110-0.157"
KD503R.1	Receptacle	4.0-6.0 mm ²	12-10/8	3.8-5.5 mm, 0.149-0.216"
KD503.2	Receptacle	4.0-6.0 mm ²	12-10/8	2.8-3.4 mm, 0.110-0.133"
KD503R.3	Receptacle	4.0-6.0 mm ²	12-10/8	5.0-8.0 mm, 0.196-0.314"