

# Parallel Voltage Transformers

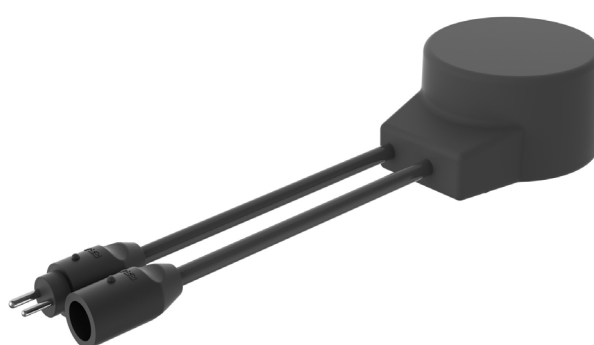
## KRV & KRVS

### Product datasheet

#### KRV



#### KRVS



EFLA is the leading manufacturer of high-quality series isolating transformers, connector kits and prefabricated cable assemblies for Airfield Ground Lightning. EFLA offers a broad range of standard products as well as customized solutions. EFLA products have been manufactured for over 30 years in Finland. EFLA is an ISO 9001 and ISO 14001 certified company.

**EFLA has two types of parallel voltage transformers: KRV for single wires and KRVS for two-core cables.**

#### KRV

The KRV transformers are installed using EFLA's standard KD510-series primary connector kits or prefabricated cable leads and assemblies or extension cords. Also, end caps KDCV01 are be used at the end of a circuit.

#### Technical information

Primary leads	2 x 60 cm/1.969 ft
Primary connector type	T-connector FAA L-823 Style 2 Plug & Style 9 Receptacle
Secondary lead	1 x 1.2 m/3.937 ft, 2 x 2.5 mm <sup>2</sup>
Secondary connector type	FAA-L-823 Style 7

## KRVS

The KRVS transformers are installed using EFLA's standard KD501- and KD502-series secondary connector kits or prefabricated secondary leads, cable assemblies and extension cords. The end cap KDVS.END is used at the end of a circuit. The transformers can be connected by using a prefabricated distribution connector KDCV.P2R.

### Technical Information

Primary lead	60 cm/1.969 ft
Primary connector type	FAA L-823 Style 1
Secondary lead	60 cm/1.969 ft
Secondary connector type	FAA L.823 Style 7

### Electrical information

EFLA type for KRV	EFLA type for KRVS	Primary voltage	Secondary voltage	Secondary power
KRV530	KRVS530	230 V	6.8 V	45/50 W
KRV536	KRVS536	230 V	9.85 V	65 W
KRV540	KRVS540	230 V	15.2 V	100 W
KRV545	KRVS545	230 V	22.7 V	150 W
KRV550	KRVS550	230 V	30.2 V	200 W