

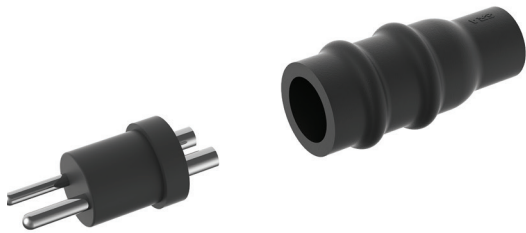
## PRODUCT DATASHEET

### Secondary Connector Kits KD501 & KD502



FAA AC 5345-26, L-823, Class B

#### KD501-series (plug)



#### KD502-series (receptacle)



KD501/502 have been the industry requirement for over 30 years. They are designed for a fast-and-easy watertight connection between the secondary cable and the series isolating transformer. This waterproof silicon filled connector is used with double insulated two core cables, 3-pin also available. Connector is fast to install, approx. 1 min. KD501/502 connectors are FAA certified.

- Superior isolation resistance by thermoplastic elastomer (TPE)
- Nominal rating: 20 A and 600 V
- Wire diameter 8,5 - 18 mm (0.334 - 0.708 inches)
- Conductor size 1,5 - 6 mm<sup>2</sup> (16 - 10/8 AWG)
- ROHS compliance with EU directive NO2002/95/EC

KD501 (Plug) and KD502 (Receptacle) are packed and delivered in kit including all the necessary parts for making the assembly on secondary cable. Each secondary connector kit contains components for a plug or a receptacle.



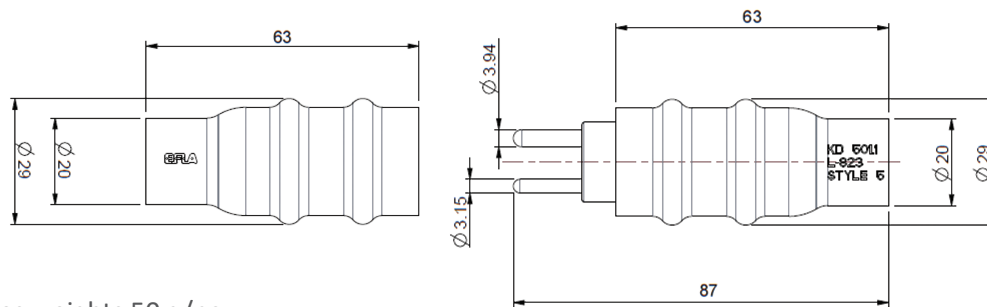
## Contents:

- 1 Silicone grease tube
- Cleaning cloth
- 1 Body with connecting parts
- Installation instructions
- 1 Plug or receptacle housings

## Dimensional data

EFLA Type	Type	Conductor Size	AWG	Cable Diameter
KD501	Plug	1.5-2.5 mm <sup>2</sup>	16-14	8.5-13.5 mm, 0.334-0.531"
KD501.1	Plug	4.0-6.0 mm <sup>2</sup>	12-10/8	11.5-18.0 mm, 0.453-0.708"
KD501.2	Plug	4.0-6.0 mm <sup>2</sup>	12-10/8	8.5-13.5 mm, 0.334-0.531"
KD502	Receptacle	1.5-2.5 mm <sup>2</sup>	16-14	8.5-13.5 mm, 0.334-0.531"
KD502.1	Receptacle	4.0-6.0 mm <sup>2</sup>	12-10/8	11.5-18.0 mm, 0.453-0.708"
KD502.2	Receptacle	4.0-6.0 mm <sup>2</sup>	12-10/8	8.5-13.5 mm, 0.334-0.531"

## Outline



\* KD501/502 series weights 50 g/pc

## Suggested crimping tools

EFLA recommends these following tools:

### Manual crimping tools:

- Elpress DKB 0760

### Electrical crimping tool:

- Elpress PVL 130S - RB0560



EFLA is the world's leading supplier of seamless power and communication products for airfield ground lighting circuits. With more than 30 years experience in the field, it develops, manufactures and sells globally-certified series isolation transformers, connector kits and prefabricated cable leads. The company's components meet the highest qualifications in materials and electrical design to withstand challenging installation in underground pits and cans and direct underground installation. Headquartered in Porvoo, Finland, EFLA supplies products to international airports around the world.