

## PRODUCT DATASHEET

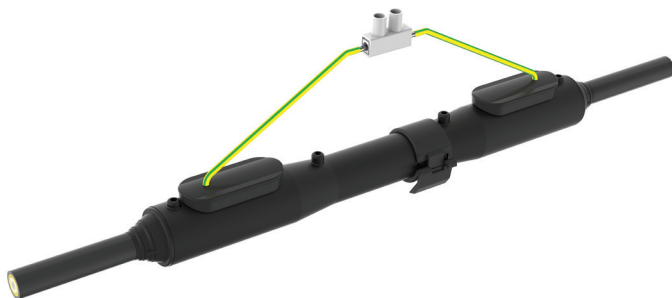
### AGL Primary Connector Kits KDR600 & KDR610



**FAA AC 5345-47, L-823 Styles 3 and 10, Class B**

**KDR600 for screened cable**

**KDR610 for unscreened cable**



KDR resin connector is designed for extreme conditions. KDR connector comes with polyurethane resin, which is poured inside the connector housing upon installation. This provides a permanent connection between connector housing and cable, which cannot be dismantled. Insulated screen continuity and epoxy resin version to high humidity environment are available on request.

- Superior isolation resistance by thermoplastic elastomer (TPE)
- Nominal rating: 25 A and 5000 V
- Cable diameter 9,0 - 19,0 mm (0.354 - 0.748 inches)
- Conductor size 6 - 10 mm<sup>2</sup> (8 - 6 AWG)
- ROHS compliance with EU directive NO2002/95/EC
- Available for screened cables (KDR600) and unscreened cables (KDR610).

KDR primary connectors are packed and delivered in kits including all the necessary parts for making the assembly on primary cables. Each primary connector kit contains components for a pair (a plug and a receptacle).

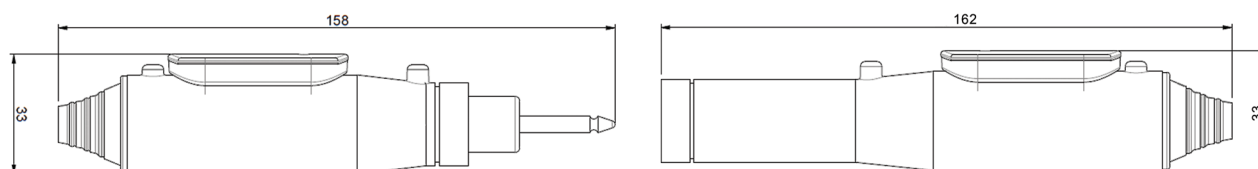


## Dimensional Data

EFLA Type	Conductor size [mm <sup>2</sup> ]	AWG	Cable diameter [mm, inch]	Diameter/Length of assembly [mm, inch]
KDR600	6	8**	9.0 – 19.0 mm, 0.354 – 0.748"	31/270 mm, 1.22/10.62"
KDR600.2	10*	6	9.0 – 19.0 mm, 0.354 – 0.748"	31/270 mm, 1.22/10.62"
KDR610	6	8**	9.0 – 19.0 mm, 0.354 – 0.748"	31/270 mm, 1.22/10.62"
KDR610.2	10*	6	9.0 – 19.0 mm, 0.354 – 0.748"	31/270 mm, 1.22/10.62"

\*16 mm<sup>2</sup> stranded, \*\*up to 19 strands

## Outline dimensions

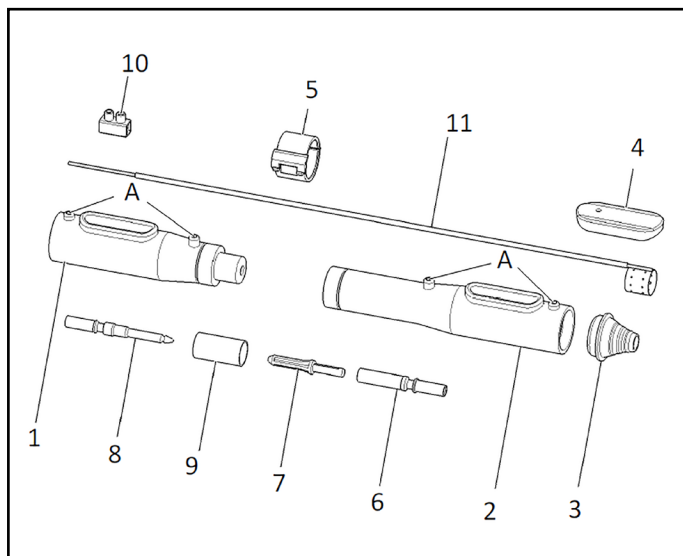


\* KD600/610 series weights 130 g/pc

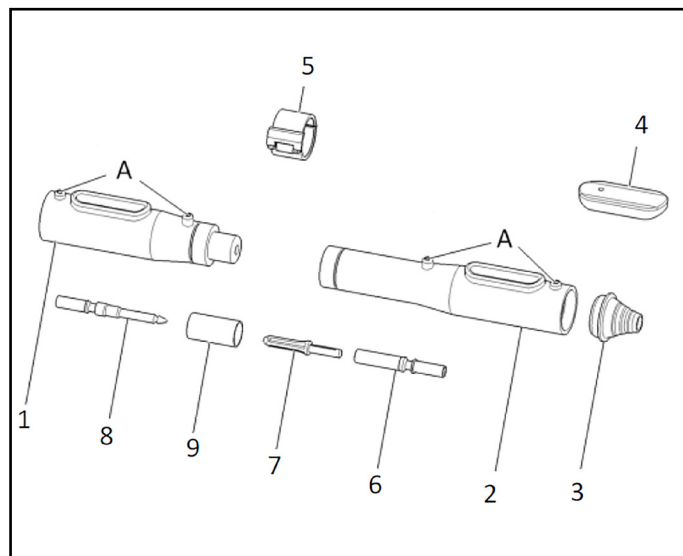
## Screen continuity – KDR600

The screen continuity for the KDR600 is a 300 mm long, 2.5 mm<sup>2</sup> yellow-green insulated copper wire.





KDR600



KDR610

## Content

Resin Bag (resin + hardener), Gloves, Sandpaper, Installation instructions, 2 strips of self-vulcanizing tape and the components labeled in these figures above.

- |    |                                       |     |                                      |
|----|---------------------------------------|-----|--------------------------------------|
| 1. | Plug elastomer housing (male)         | 7.  | Guiding pin (plastic)                |
| 2. | Receptacle elastomer housing (female) | 8.  | Metal pin                            |
| 3. | End cap (x2)                          | 9.  | Plastic gauge                        |
| 4. | Protective cap (x2)                   | 10. | Screw type connector (6mm2)          |
| 5. | Locking device                        | 11. | Screen conducting wire and ring (x2) |
| 6. | Socket                                | A.  | Air holes                            |

## Suggested crimping tools

EFLA recommends these following tools:

### Manual crimping tools:

- Elpress EWB 4099C
- KLAUKE K05/6
- KLAUKE K24
- KLAUKE K18

### Electrical crimping tool:

- Elpress PVL 130S - WB4099



EFLA is the world's leading supplier of seamless power and communication products for airfield ground lighting circuits. With more than 30 years experience in the field, it develops, manufactures and sells globally-certified series isolation transformers, connector kits and prefabricated cable leads. The company's components meet the highest qualifications in materials and electrical design to withstand challenging installation in underground pits and cans and direct underground installation. Headquartered in Porvoo, Finland, EFLA supplies products to international airports around the world.