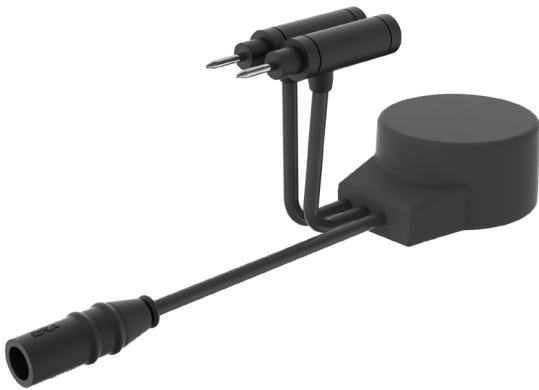


# PRODUCT DATASHEET

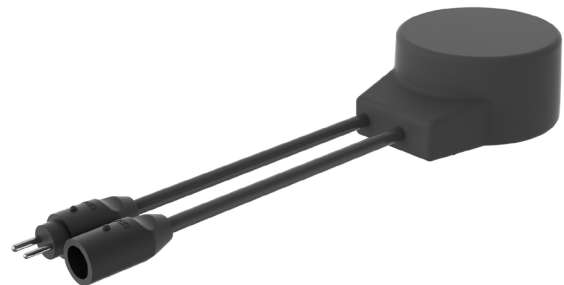
## Parallel Voltage Transformers KRV & KRVS



### KRV



### KRVS



KRV parallel transformers are designed to be connected to a normal line voltage (for example, 230 VAC). Transformers supply a certain voltage on the secondary side. They are typically used in heliports and helipads.

- Superior isolation resistance by thermoplastic elastomer (TPE)
- Optimal physical size and electrical performance of toroidal structure
- Primary voltage of 230 VAC
- Secondary voltages 6.8 - 30 VAC
- Secondary power 45 - 200 W
- Current rating of 20 A and frequency of 50/60 Hz

EFLA has two types of parallel voltage transformers: KRV for single wires and KRVS for two-core cables.



## KRV

The KRV transformers are installed using EFLA's standard KD510-series primary connector kits or prefabricated cable leads and assemblies or extension cords. Also, end caps KDCV01 are used at the end of a circuit.

## KRVS

The KRVS transformers are installed using EFLA's standard KD501- and KD502-series secondary connector kits or prefabricated secondary leads, cable assemblies and extension cords. The end cap KDVS.END is used at the end of a circuit. The transformers can be connected by using a prefabricated distribution connector KDCV.P2R.

## Technical information

	KRV	KRVS
<b>Primary leads</b>	2 x 60 cm/1.969 ft	60 cm/1.969 ft
<b>Primary connector type</b>	T-connector FAA L-823 Style 2 Plug & Style 9 Receptacle	FAA L-823 Style 1
<b>Secondary lead</b>	1 x 1.2 m/3.937 ft, 2 x 2.5 mm <sup>2</sup>	60 cm/1.969 ft
<b>Secondary connector type</b>	FAA-L-823 Style 7	FAA L.823 Style 7

## Electrical information

EFLA type for KRV	EFLA type for KRVS	Primary voltage	Secondary voltage	Secondary power
KRV530	KRVS530	230 V	6.8 V	45/50 W
KRV536	KRVS536	230 V	9.85 V	65 W
KRV540	KRVS540	230 V	15.2 V	100 W
KRV545	KRVS545	230 V	22.7 V	150 W
KRV550	KRVS550	230 V	30.2 V	200 W



## Dimensions

	EFLA type	D [mm]	L [mm]	H [mm]	Weight [kg]
KRV530	KRVS530	100	125	55	1.4
KRV536	KRVS536	126	168	56	1.5
KRV540	KRVS540	147	193	60	2.3
KRV545	KRVS545	147	193	60	2.4
KRV550	KRVS551	147	193	63	3.3

## Connecting accessories

EFLA type	Description
KDCVO1	End cap for KRV-series
KVDS.END	End cap for KRVS-series
KDCV.2PR	Distribution connector for KRVS-series

**KDCV01**



**KDVS.END**



**KDCV.P2R**



EFLA is the world's leading supplier of seamless power and communication products for airfield ground lighting circuits. With more than 30 years experience in the field, it develops, manufactures and sells globally-certified series isolation transformers, connector kits and prefabricated cable leads. The company's components meet the highest qualifications in materials and electrical design to withstand challenging installation in underground pits and cans and direct underground installation. Headquartered in Porvoo, Finland, EFLA supplies products to international airports around the world.

