

## PRODUCT DATASHEET

### Accessories for secondary connectors



#### Accessories for secondary connectors

Offers a quick solution to handle more complex secondary circuit application requirements in terms of parallel transformer setting, double loading on secondary and short impedance on secondary side.

- Special solution for special secondary requirement
- Easy and fast installation

**KDCA.P2R**



**KDCA.2PR**

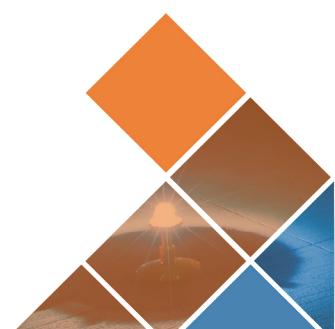


In some cases, it is possible to use two loads after one AGL series transformer. KDCA.P2R has been designed for this purpose. The distance between connectors is approx. 20 cm.

Materials: Both of the above mentioned products are made by assembling prefabricated products in combination.

If the load supplied by standard AGL series transformers is insufficient, it is possible to use two AGL series transformers connected through KDCA.2PR. Distance between connectors is approx. 20 cm.

Note: When the secondary circuit is earthed, only one of the transformers can have the earthing option.



## KDC506.SHORT



This connector is designed for the short-circuited secondary side of an unused AGL transformer, almost eliminating the impedance of the secondary side. The connector also operates as a watertight cap.  
Current rating: 20A, Voltage rating: 600V

## KDCY



An easy and space saving way to divide the secondary circuit into two parallel circuits. Perfect for installations where long cable are not wanted/needed.

**EFLA is the world's leading supplier of seamless power and communication products for airfield ground lighting circuits.** With more than 30 years experience in the field, it develops, manufactures and sells globally-certified series isolation transformers, connector kits and prefabricated cable leads. The company's components meet the highest qualifications in materials and electrical design to withstand challenging installation in underground pits and cans and direct underground installation. Headquartered in Porvoo, Finland, EFLA supplies products to international airports around the world.

EFLA OY • Kipinätie 3 • FI-06150 Porvoo, Finland • tel +358 (0)20 198 0190 • [www.efla.net](http://www.efla.net)