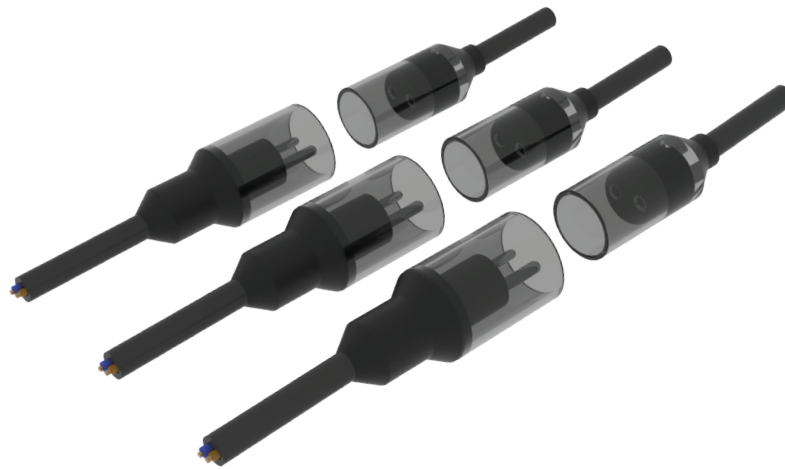


PRODUCT DATASHEET

Extension cords for frangible masts KDC6



ICAO Aerodrome Design Manual, Part 6, Frangibility
FAA AC 150/5220-23 Frangible connections



KDC6 prefabricated extension cords meet the frangibility standards. They are equipped with a special break-away connector which is secured by an additional sleeve. If an airplane crashes with the approach light mast, connector opens safely from specific points, prevents cable rupture, and minimizes the risk of any additional hazards, like ignition of kerosin. Break-away extension cords are fully compliant with **ICAO Aerodrome Design Manual Part 6, Frangibility requirements**.



Proven frangibility

- Full scale impact tested break-away mechanism according to the ADM Part 6 Chapter 5 and FAA AC 150/5345-45g, section 4
- Ensure proper frangibility behavior of mast structure
- Prevent any additional hazards in case of an impact, like fires or cable wrapping around the aircraft

Lowest cost of ownership

- Easy and fast plug and play installation on-site
- Maintenance free solution for the whole frangible mast lifespan including cable assemblies and mount ties

Extension cord information

Type	Extension cord, plug & receptacle
Housing	TPE molded
Cross section	Two-core, 2 x 2.5 mm ²
Length*	According to customer specs
Diameter of insulation (approx.)	3.7 mm
Outer diameter	9.7 ± 0.3 mm
Max. conductor resistance at 20 °C	7.98 ohm/km
Dual insulation	EPR-insulated & TPE-sheathed
Core insulation	Special EPR compound
Outer sheath	Halogen free TPE compound (IEC 60752-2 / EN 50267-2-3)
Conductors	Copper, Class 5 (IEC 60228)
Nominal voltage	600 V
Temperature range	-40 °C to +120 °C (-40 °F to 248 °F)
Short term short circuit temperature resistance	300 °C (570 °F)
Bending radius	5D
Specifications	FAA L-824, MIL-C-3432, MIL-C-4921 & ICEA S-66-524 ICAO ADM6 FAA AC 150/5220-23



Ordering information

Customized cable length (cm)

KDCX - X . X . X I

Extension cord type	Receptacle type	Plug type	Cable cross section
Lighting fixture cabling	502 Secondary receptacle style 7	6 Break-away plug	1 1.5 mm ²
Mast cabling	6R Break-away receptacle	6 Break-away plug	2 2.5 mm ²
Transformer pit cabling	6R Break-away receptacle	501 Secondary plug style 1	4 4 mm ²

Break-away points are illustrated as Figure 1.

Extension cord type	
1	Lighting fixture cabling
2	Mast cabling
3	Transformer pit cabling

Related products

Break-away connector kits	KD6 & KD6R
Mount ties for mast assembly	DTRH-LR0 DT-HQ0
Transformer connector kit	KD501
Light fixture connector kit	KD502

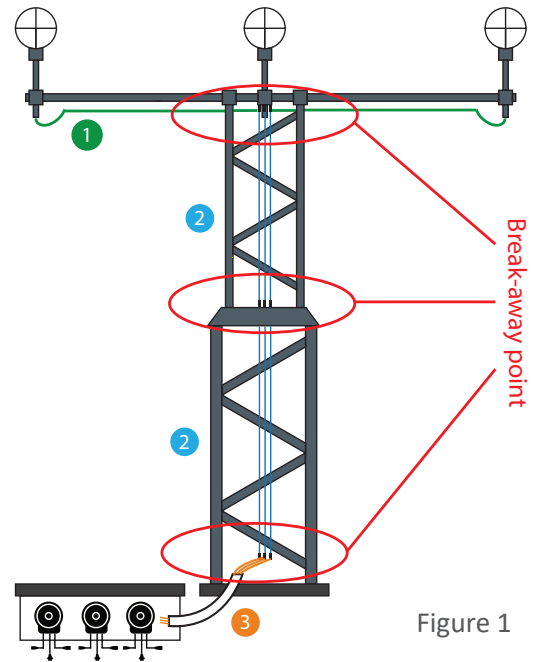


Figure 1

EFLA is the world's leading supplier of seamless power and communication products for airfield ground lighting circuits. With more than 30 years experience in the field, it develops, manufactures and sells globally-certified series isolation transformers, connector kits and prefabricated cable leads. The company's components meet the highest qualifications in materials and electrical design to withstand challenging installation in underground pits and cans and direct underground installation. Headquartered in Porvoo, Finland, EFLA supplies products to international airports around the world.