

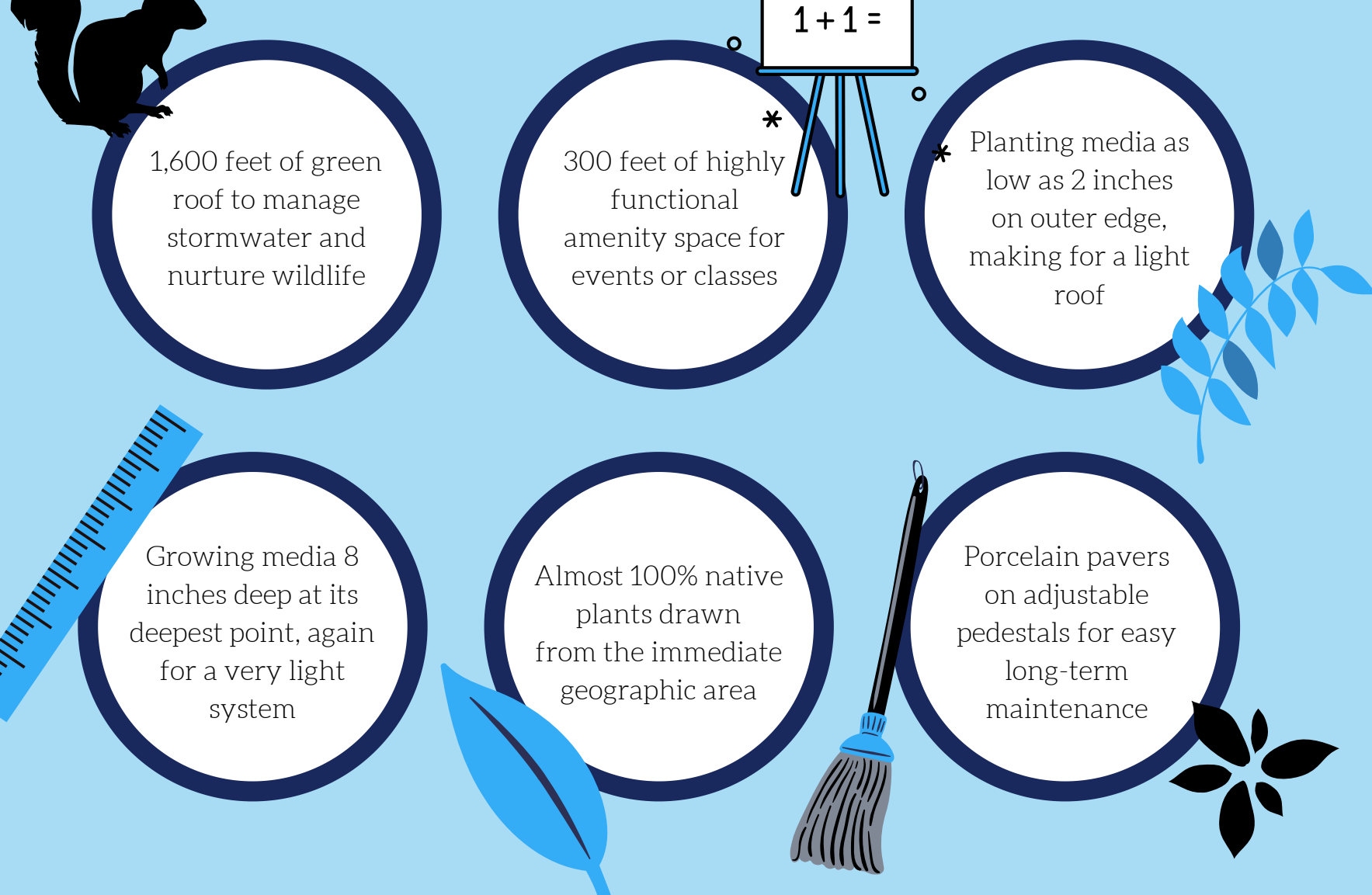


## HOW GREEN ROOF CONSULTING BENEFITED ORLAND PARK

In partnership with the Village of Orland Park, the Ecogardens team developed a novel model of green roof construction. Not to brag, but this consultation-based approach to green roof design and installation is something we need more of.

### functional, beautiful design on a municipal building

here are the highlights:

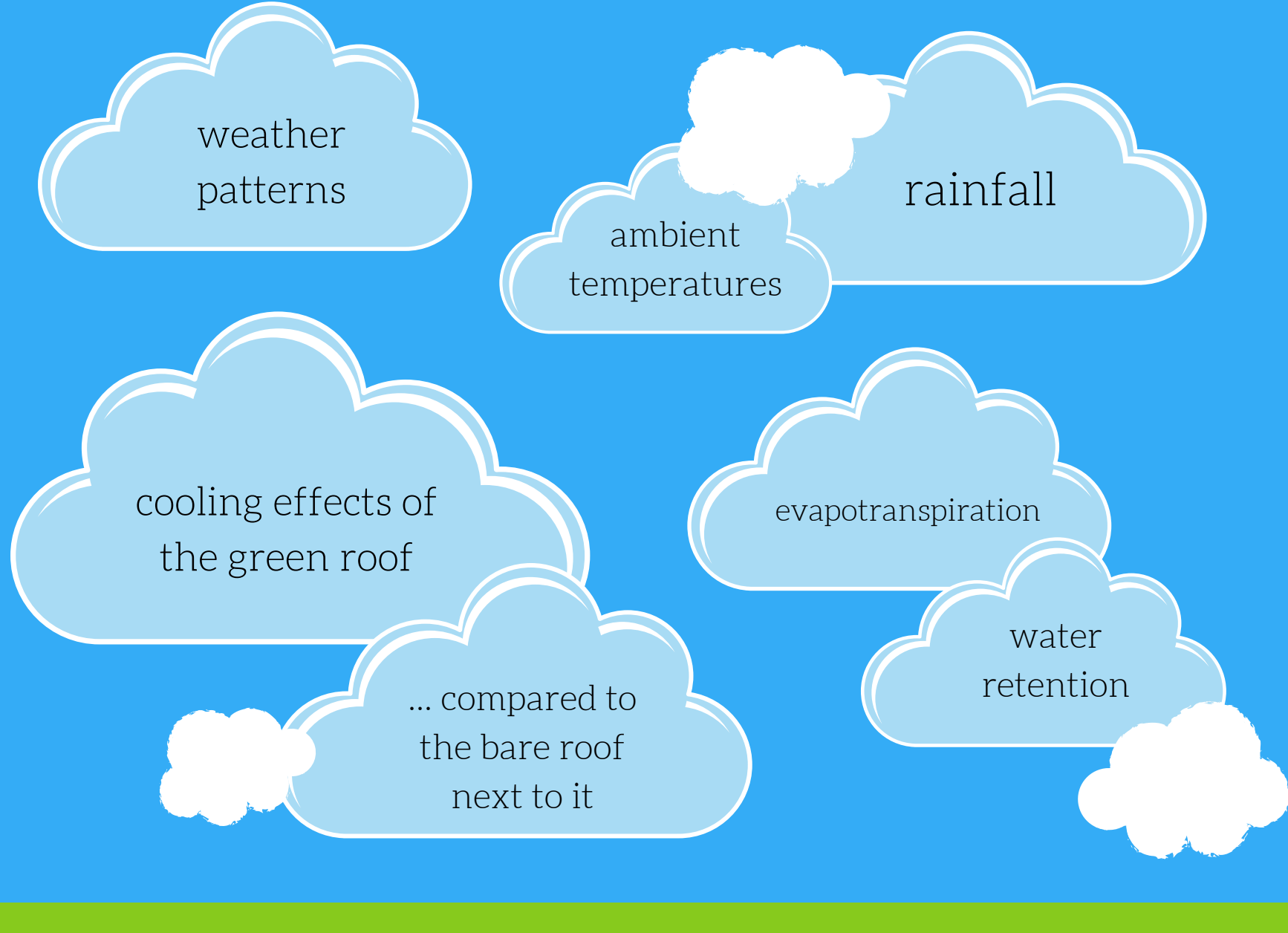


### TO GET THESE BENEFITS, WE WORKED COLLABORATIVELY WITH ORLAND PARK.

In the process, we:

- Partnered with the city government to create a novel public-private game plan
- Supplied the design and materials to the city's stakeholders
- Worked with city workers to install the green roof from start to finish
- Taught those municipal workers green roofing skills to use on future projects
- Created hundreds of square feet of new green roof and amenity space that didn't exist before
- Used almost entirely local plantings that will help draw in local wildlife
- Employed a range of cutting-edge technologies to manage stormwater
- Installed specialized monitoring equipment to track multiple climate metrics

### this working rooftop employs technology to monitor:

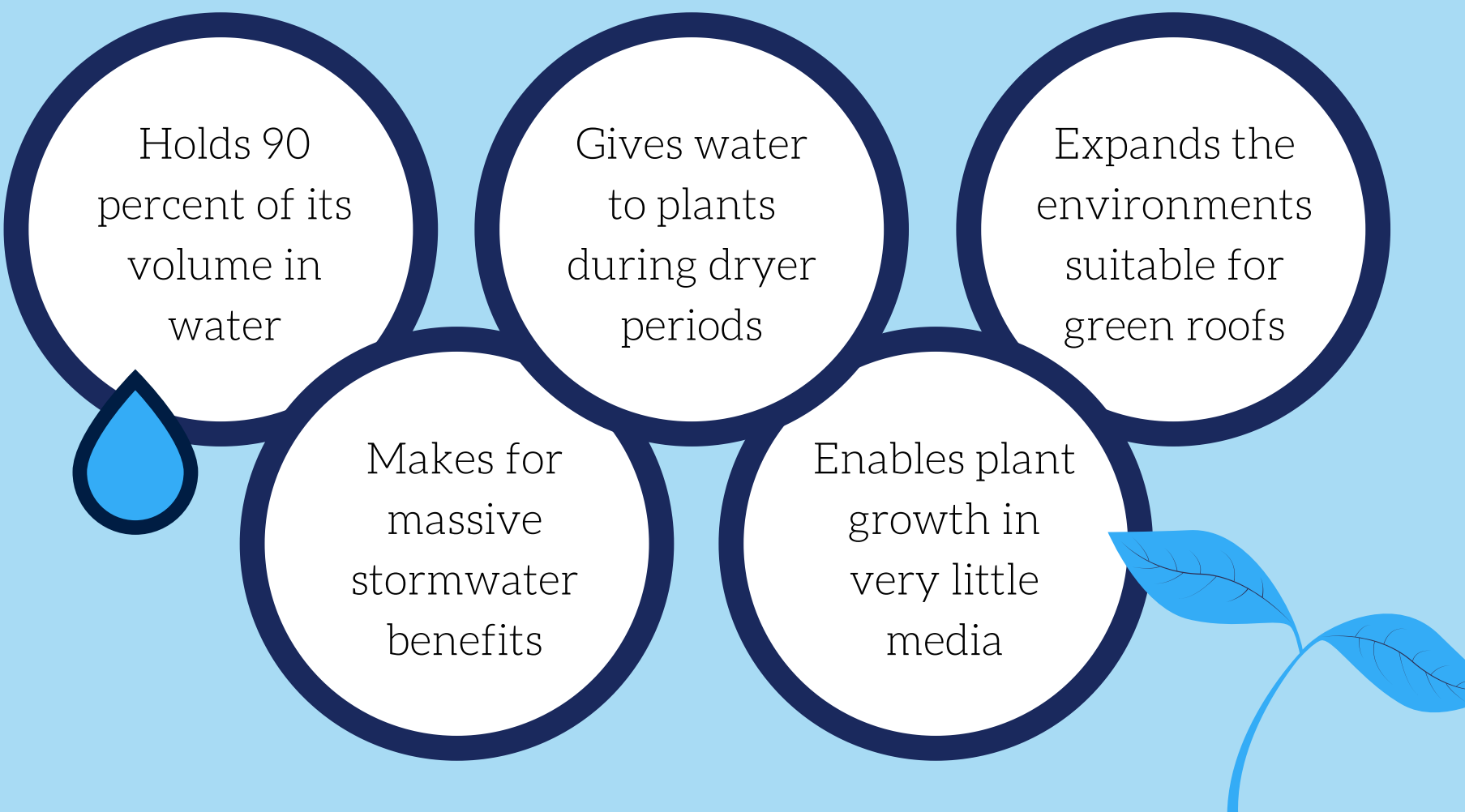


It also has video, so we've caught all sorts of wildlife on candid camera! We see you, you adorable birds, you.

### OTHER CUTTING-EDGE TECHNOLOGIES USED INCLUDE:

- Prototype high-efficiency water retention layer
- Thin, light growing media capable of supporting plants in 2 inches or more
- Porcelain pavers on adjustable pedestals
- Monitoring and weather station equipment

### speaking of that prototype high-efficiency water retention layer:



### THE BENEFITS OF CONSULTING

So much was possible because the Village of Orland Park worked with a knowledgeable green roofing company, leveraging the benefits of consulting while still playing an active role in the process. Throughout the partnership we:

- Taught municipal personnel how to create green roofs
- Saved the city money - between 20 and 30 percent the cost of outsourcing entirely
- ... and that's including the learning curve and union wages
- Worked in close partnership to realize Orland Park's vision
- Will continue to consult in future on the health of the green roof

### JUST HOW DO YOU KEEP A ROOF AS HEALTHY AS POSSIBLE?

Here's a great start:

