

EXPERIENCE THE NEXT



Next level of Performance, p. 2

Next level of Reliability, p. 3

Next level of Efficiency, p. 4

Next level of Usability, p. 7

Next level of Functionality, p. 9

Open Platform VMS by AxxonSoft

- Unlimited number of cameras, servers and remote clients
- iOS, Android, and web remote client applications
- Support for more than 1,500 IP camera models and analog cameras
- New IP camera Drivers Pack every 6 weeks free of charge
- Interactive 3D Map for instant camera pinpoint
- Unique tools for fast video footage retrieval
- Advanced video analytics
- Full functionality in systems of any scale
- Zero maintenance fees: free support and free updates
- Free 16 channel version is available



By Benchmark magazine

Next level of performance

SolidStore file system

- Fast file access, zero fragmentation
- Unsurpassed reliability for video storage
- Greater hard disk service life



SolidStore

Green Stream

- Automatic switching between video streams based on resolution of a camera view
- Reduced CPU and network footprint



Video grooming for detection tools

- Decompression performed only for frames needed for video detection tools, not the entire stream: keyframes (H.264 , MPEG) or 2 fps (MJPEG)
- Reduced load on server CPU when detection tools are used



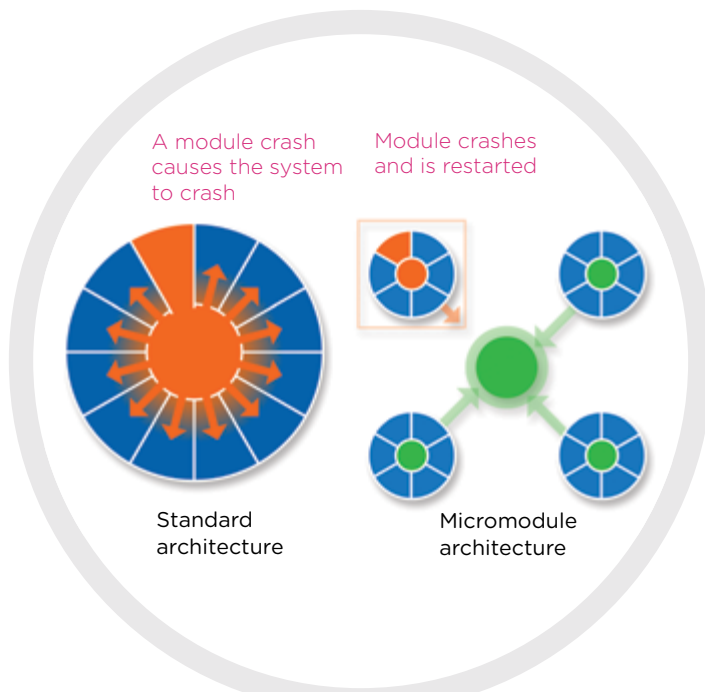
Video recompression on server

- Camera video is decompressed and compressed with the Motion Wavelet codec on the server
- Once compressed, video can be sent to different clients at the necessary resolution and frame rate
- Reduced load on network and client computer CPUs



Next level of reliability

Micromodule architecture



- Greater reliability – each system function is performed by a separate micromodule
- If an error occurs, only the micromodule in question is relaunched, without affecting the functioning of the system overall
- Ease of micromodule testing enables quicker delivery of stable new product versions

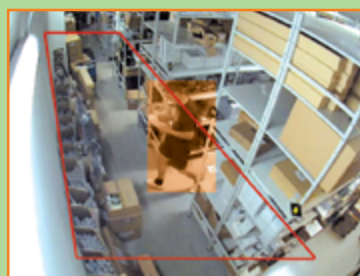
Next level of efficiency

Advanced thumbnail search

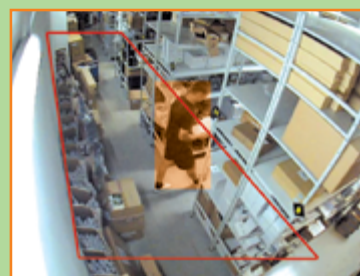
- Split a section of a video into equal-sized intervals, with display of the first frame of each interval
- For more detail, select an interval and split it again by clicking
- Find any moment of interest in a recording in just a few clicks



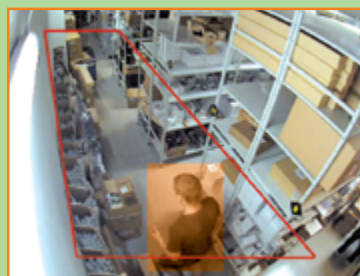
Search range: 13/03/2013 09:00:00 AM – 13/03/2013 11:00:00 AM



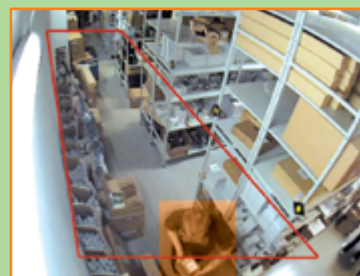
09:17:34.371 AM



09:19:12.003 AM



09:22:40.022 AM



09:23:02.107 AM

Event-based archive search

- Get an on-screen preview of all video that matches the selected event type

Select one or more event types:

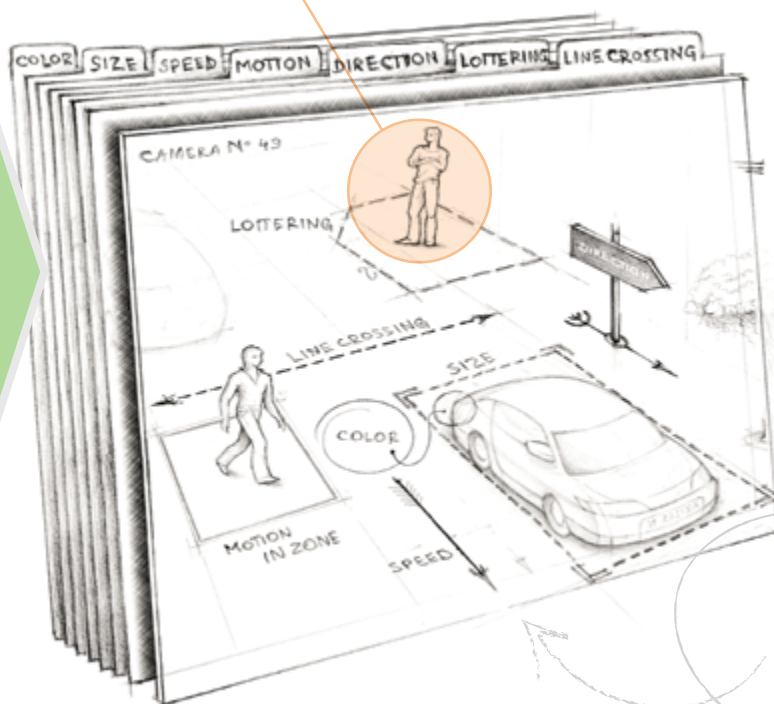
- detection triggered, recording started, alarms
- Fast synopsis of recorded video by type, quick pinpointing of specific moments

Comment-based archive search



- Add text comments to a frame, video interval, or alarm
- Indicate the places or areas in the frame to which the comment applies
- Quick search of video by comment text

MomentQuest2 forensic search



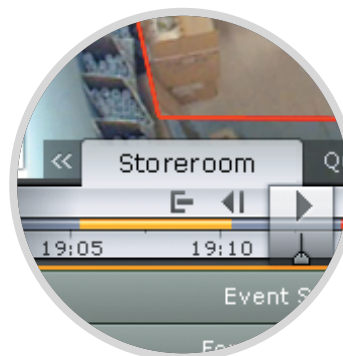
Search criteria:

- zone entry, motion in area of interest, movement between areas, color, size, etc.
- Criteria set at the time of search, no pre-configuration of detectors is necessary
- Metadata generated during video recording guarantees fast searches

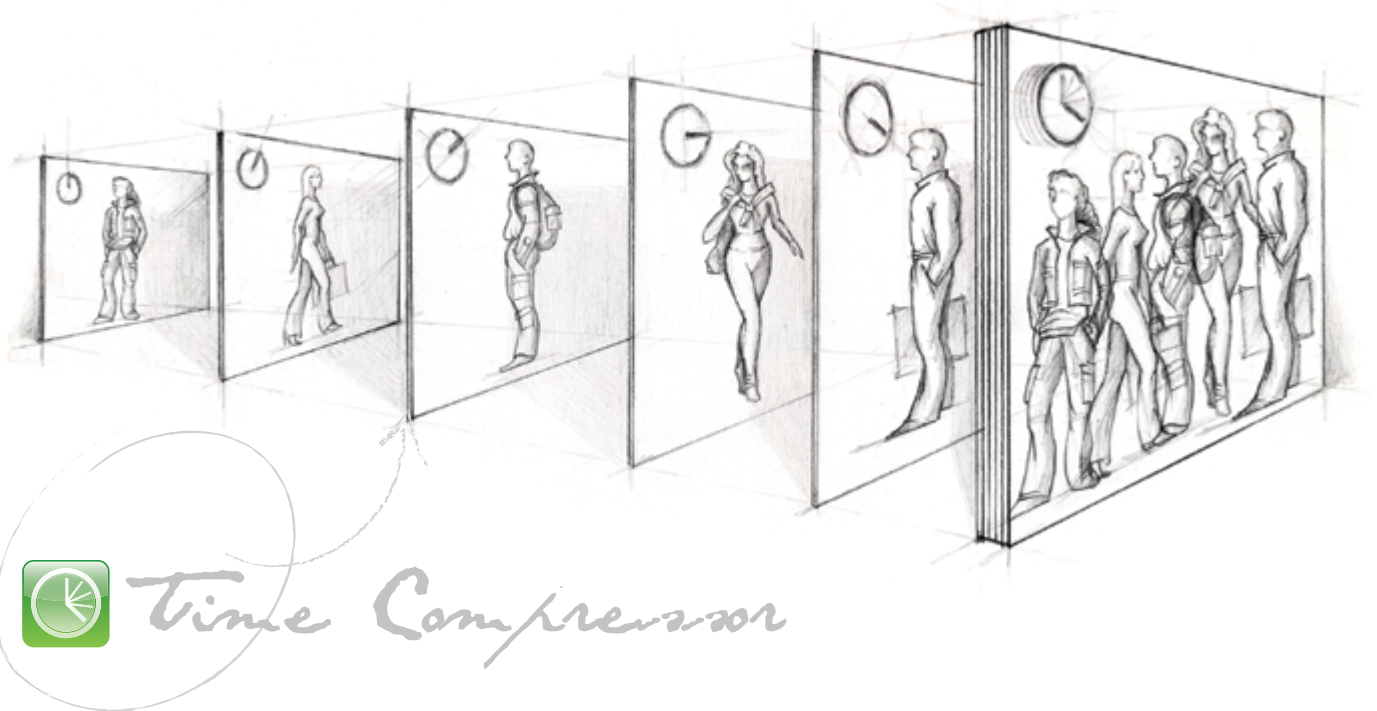


Automated tagging

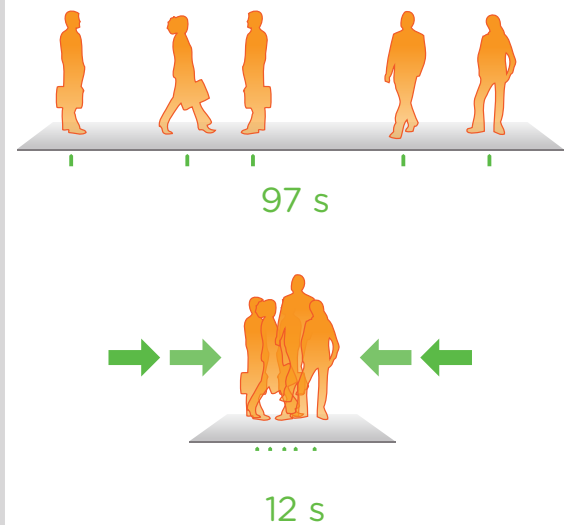
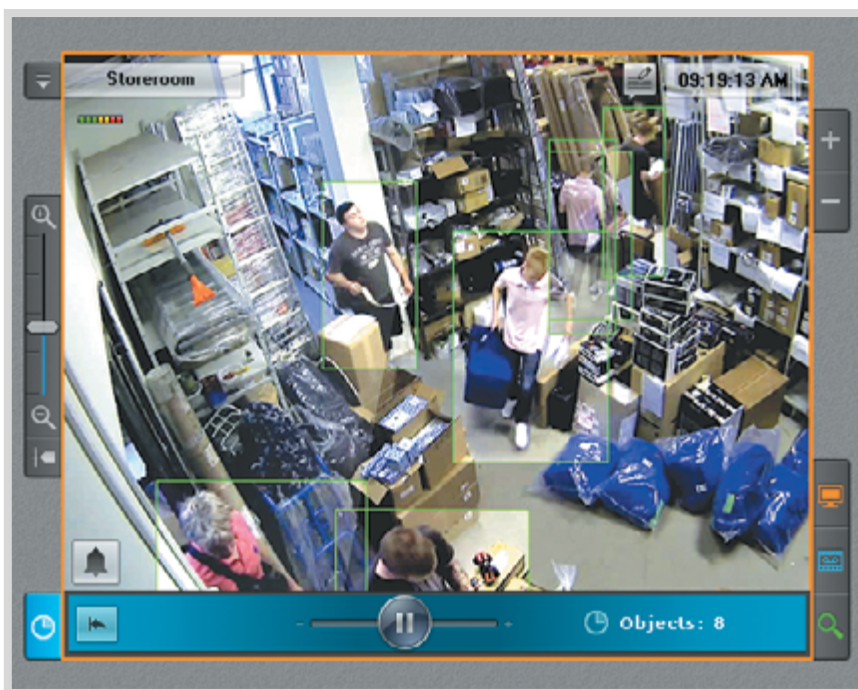
- Save common MomentQuest2 searches for rapid access
- Give plain English names to searches
- Edit searches



Time Compressor



- Simultaneously view all objects that moved in the frame during the selected period
- Speed up search (by dozens of times) for an object of interest
- Click to view a video fragment in normal mode

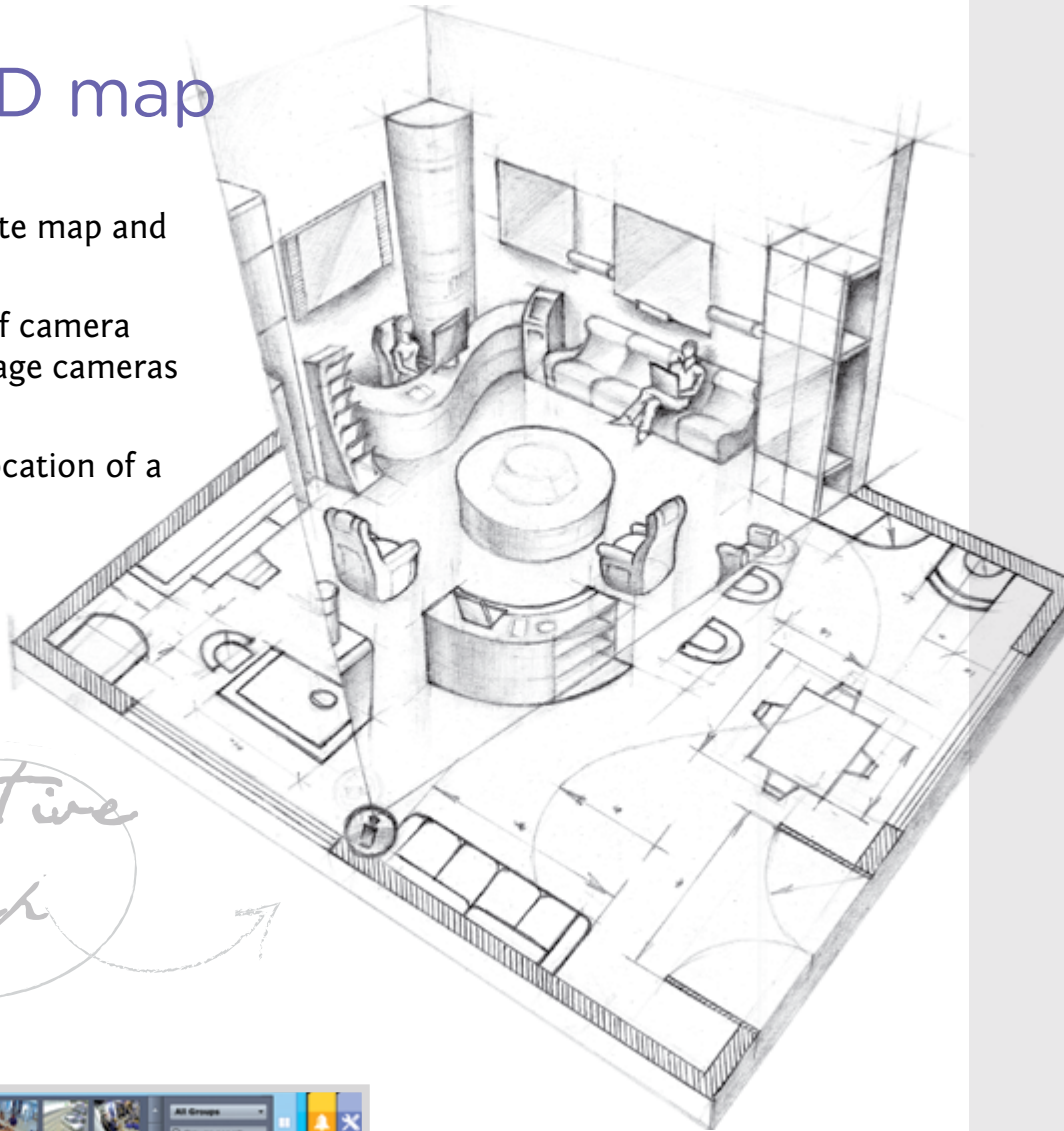


Next level of usability



Interactive 3D map

- Efficient placement of a site map and video in a single window
- Visually intuitive display of camera locations at the site; manage cameras with context menus
- Instantly determine the location of a camera of interest

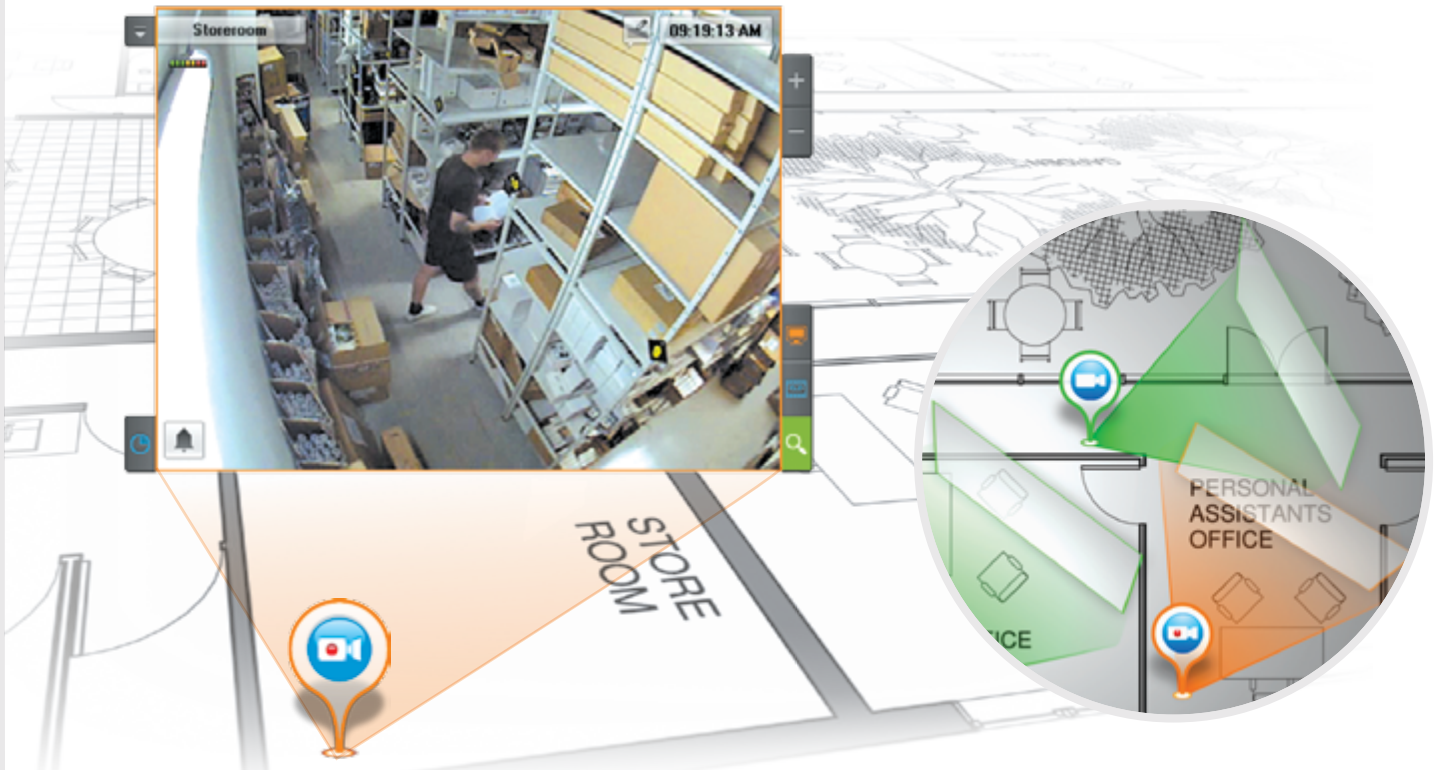


*Interactive
3D Map*



Immersion Mode

- Superimpose video on the map, combining in-frame objects with their representations on site blueprints
- See how motion of objects in-frame is reflected as movement in real space
- Support for fixed and fisheye cameras, switch between cameras in immersion mode



Integration with Geomaps



- Use Geomaps as site blueprints
- Save time on creating blueprints; map is automatically updated
- Scale and navigate the map while additional data is obtained from the Internet in real time

Next level of functionality

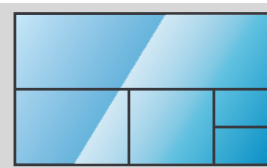
Customizable camera layouts



- Create layouts for any configuration

Display all video formats in a single layout:

- 4:3, 16:9, panorama
- Digital zoom position is saved for each camera



VideoWall. Configure viewing tiles on additional monitors



- Configure layouts for additional monitors from the main computer monitor
- Configuration steps are not visible on the additional monitor
- The new layout is instantly displayed on the additional monitor, without any downtime

360 degree camera support

- Fisheye dewarping via GPU processing
- Multiple fixed images are derived to create tiles in the user-specified format
- Support for standard fisheye lenses and panomorphic lenses from ImmerVision



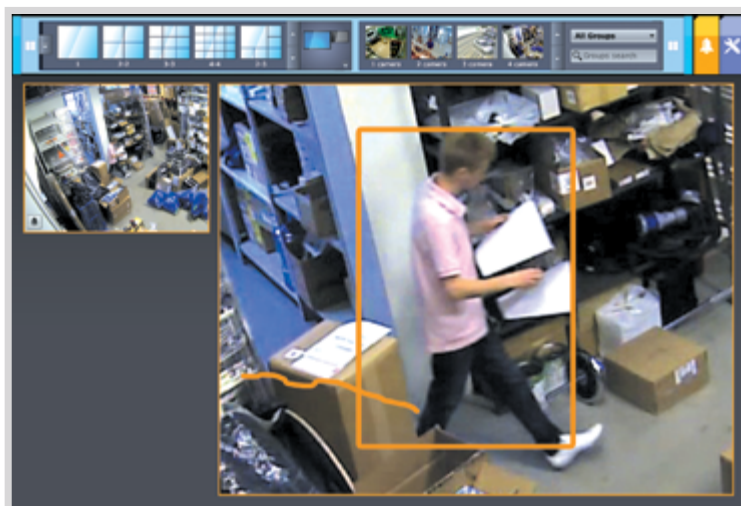
Manage Virtual PTZ cameras from the map

- Click to position a Virtual PTZ camera at a selected location on the map
- Easy, visual camera management



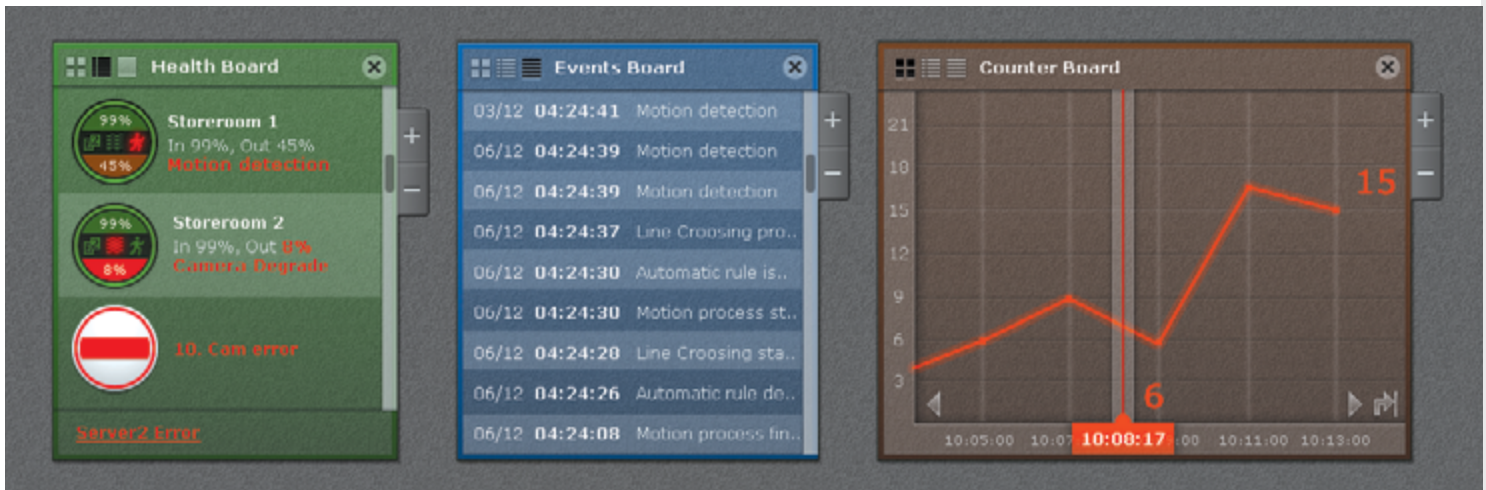
Autozoom

- Automatic digital zoom and following of objects
- Change the position of digital zoom based on the number of objects in the frame
- Support for fixed cameras and Virtual PTZ cameras



Dashboards

On-screen display of vital information at a glance:



Health Board – status and function indicators for servers and connected cameras

Events Board – list of system events, based on a custom filter

Counter Board – the number of events of a selected type, as an image and numeric value

Video Analytics

- 10 video detection tools included in all licenses, free of charge
- Convenient, interactive configuration of video detection tools
- Flexible, convenient configuration of system responses to triggers

