

Quick Start Guide of UVR

1 Notes

- Before using the device, read the following guide carefully to avoid human injury, device damage, data loss, decrease of the device performance, and other unexpected damages.
- The descriptions herein may not exactly match the product or its accessories you purchase. It is just for reference only.
- Please do not use the power adapter unauthorized. Any change or modification that not approved by the related department will void the warranty of the product.

2 HDD installation

This series products support 1 or 2 HDD(s). Please turn off the power and then start the installation of HDD. The pictures of the installation are only for reference.

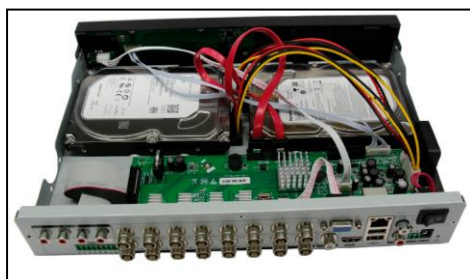
1. Loosen the screws in back and right/left side to open the cover.



2. Place the HDD in the machine and tight the screws.



3. Connect the power and data cables.



4. Install the cover and screws.

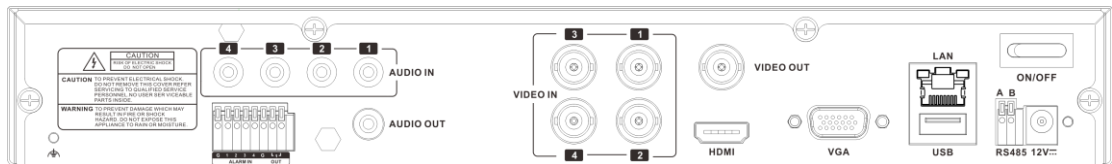


3 Front Panel



The front panel is for reference only.

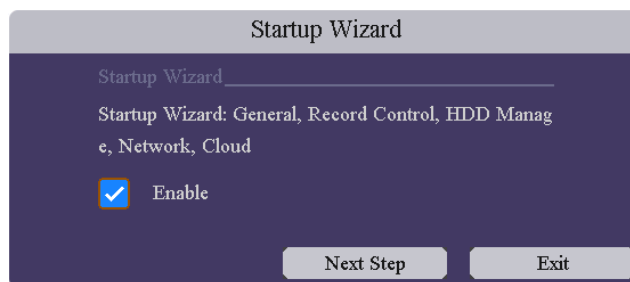
4 Rear Panel



The rear panel is for reference only.

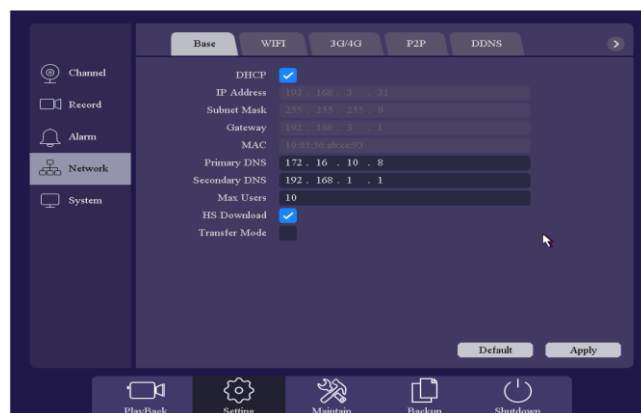
5 Startup Wizard

After power on the device, it will show the Startup Wizard configuration. Click “Next Step” to login(default login password is 1234567u). It will help you to set the general parameters, record schedule, HDD configuration, Network Setting and P2P(Cloud).



6 Network configuration

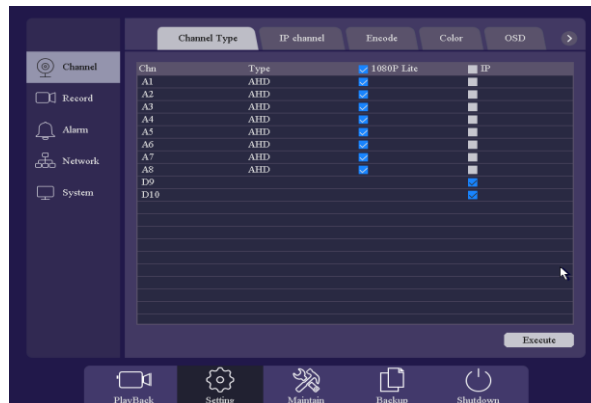
Enter the menu: [Main Menu] ->[Setting]->[Network]->[Base]. Enable the option “DHCP”, the device will obtain an IP address from the Router. You may set the IP address manually: disable the option “DHCP” and fill in the blanks with IP address and DNS information.



7 Channel type

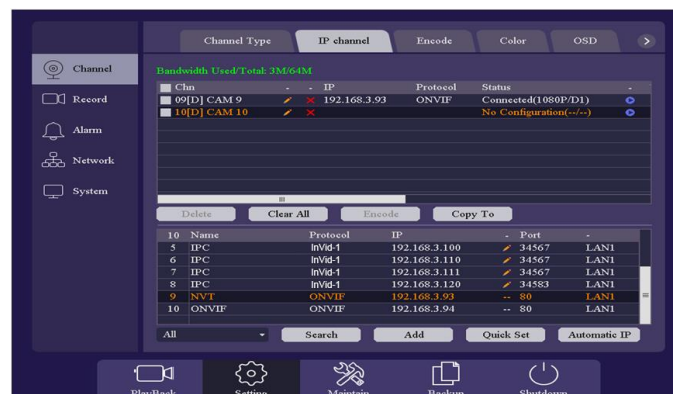
Enter the menu: [Main Menu]->[Setting]->[Channel]->[Channel Type]. The device can identify the

signal of AHD/TVI/CVBS automatically and no need to configure. It support 8 analog channels and 2 IP channels by default. A1-A8 can be changed to IP channel.



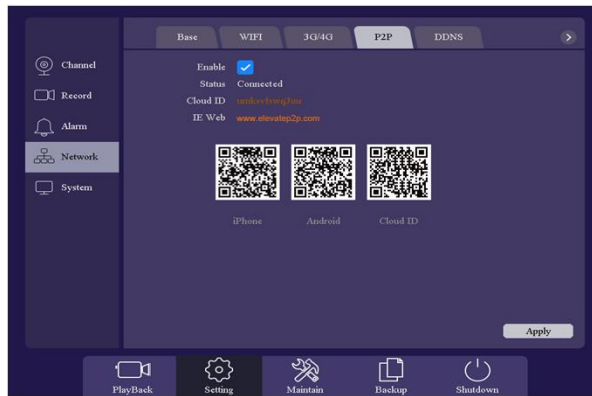
8 IPC configuration

Click the “+” on the preview screen and enter the IPC configuration screen. Click the Search button and it lists all the IPCs in the local network. Click the “Quick Set” button and the IPCs will be set to the channels in order automatically. Also you can add the IPC manually by click the icon and fill in the parameters of IPC. Click the icon to check the status of the channel. Click the icon to upgrade the IPC via this UVR device. Select the channel and click “Delete” button to remove the IPC from the channel, or click “Clear All” button to remove all IPCs by one click. Also you may configure the IP address of IPC by clicking the icon for the IPCs listed below(only InVid-1's IPC support this function), or click the button “Automatic IP” and the IPC will be set to defined IP address from “192.168.1.20”. You may refer to the User Manual for more details.



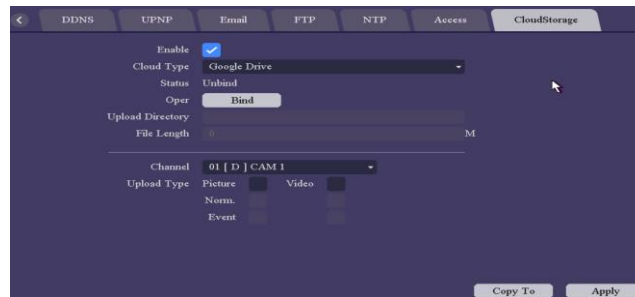
9 P2P

Make sure that the device is connected to the network and then enter the menu: [Main Menu] ->[Setting]->[Network]->[P2P]. Enable the option and it will show the status if connecting to the server successfully. Try to access the IE Web: www.elevatep2p.com to login the web server and manage the device. You may also download the APP by scanning the QR-code.




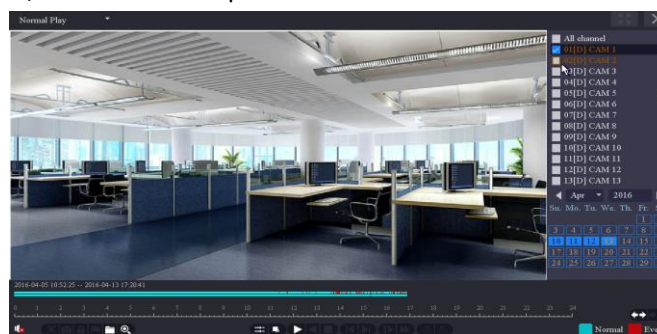
10 Cloud Storage

Enter [Main Menu] ->[Setting] ->[Network]->[Cloud Storage]. Two types of cloud storage are supported: Google Drive and Drop box. Enable the function and choose the one you would like to use and start the binding procedure. You may upload videos and pictures to the Cloud Storage automatically.



11 Playback

Right click the mouse and enter [Record Playback], select the playback mode on the Top-left of the screen. It supports 5 play modes such as: Normal play/ event play/ label play/ Time division play/ Normal play(Picture), select channels and date, then click  to play the records. Control bar is used to play/pause, speed up/slow down, backward/stop, etc. You may clip the record, set a label or lock the file, for more details please refer the User Manual.



12 Backup

Right click the mouse, enter [Main Menu] and choose the option [Backup]. You can backup videos and pictures to extend USB driver. Two kinds of file format are available: DAV&AVI. Then detect/select the memory device and start the backup.

Video
Picture

Record CHN
All 1 2 3 4 5 6 7 8 9 10

Type: All Record File format: dav

Start Time: 2016 - 07 - 02 00 : 00 : 00

End Time: 2016 - 07 - 02 11 : 00 : 07

9	CH	Type	Start Time	End Time	Size	
1	1	R	16-07-02 09:18:39	16-07-02 09:25:15	59.57 MB	
2	1	R	16-07-02 09:25:31	16-07-02 09:25:40	1.46 MB	
3	1	R	16-07-02 09:26:36	16-07-02 09:26:50	2.19 MB	
4	1	R	16-07-02 09:27:40	16-07-02 09:27:50	1.56 MB	
5	1	R	16-07-02 09:29:26	16-07-02 09:29:39	1.97 MB	
6	1	R	16-07-02 09:29:51	16-07-02 09:30:05	2.27 MB	
7	1	R	16-07-02 09:30:36	16-07-02 09:30:45	1.39 MB	
8	1	R	16-07-02 09:47:17	16-07-02 09:47:31	2.29 MB	
9	1	A	16-07-02 10:42:34	16-07-02 10:50:26	136.13 MB	

Require/Remain: 208.98 MB / 3.48 GB Search

Selected Device: sdb1 (USB DISK) Detect Start Format

PlayBack
 Setting
 Mantain
 Backup
 Shutdown