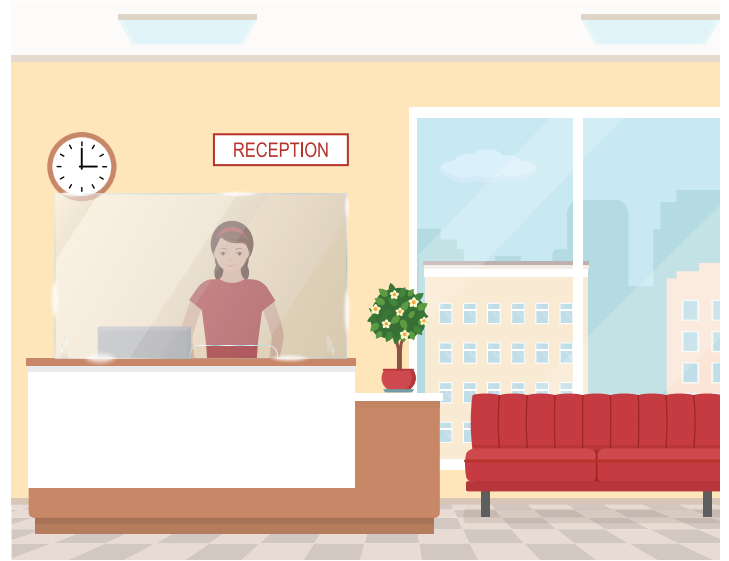
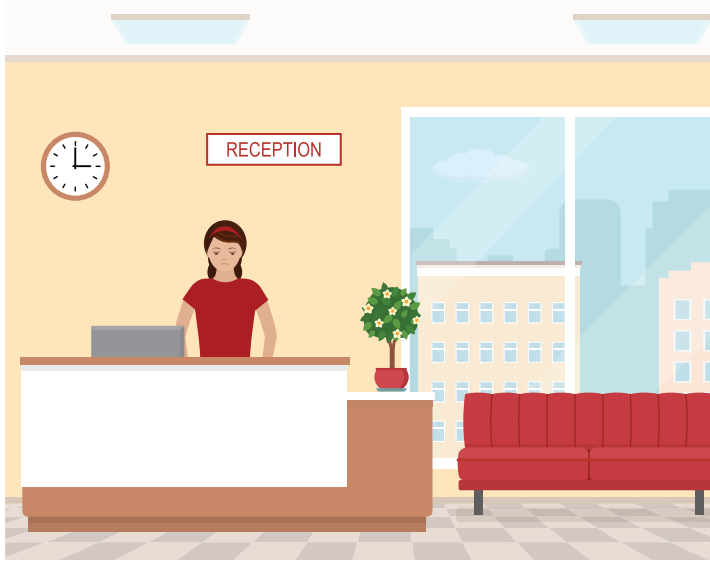


PHASE:3

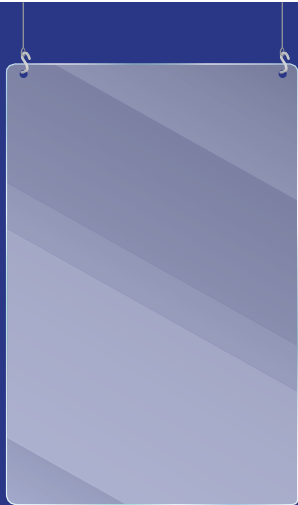
Workplace Protective Solutions

On-demand acrylic protective sheets, optically clear and ready to install.



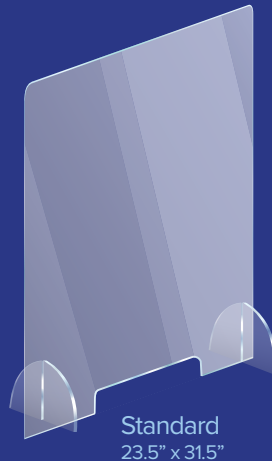
As the nation considers how to get back to work, we have your back...and your front. We know the health and safety of employees and customers alike is paramount. Acrylic, crystal clear barriers provide protection and peace of mind from the front desk to the production floor.

today
to ———
tomorrow



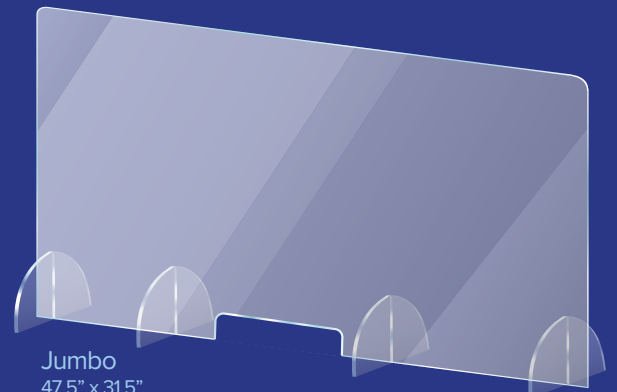
Hanging Protective Shield

- Includes hanging hardware:
2 s-hooks & 6ft of cable per hook
- Custom sizing available



Freestanding Protective Barrier

- Interlocking acrylic feet
- Letter sized pass-through
- Two sizes: Standard & Jumbo
- Custom sizing available



Contact us today for pricing and details.

www.phase3mc.com • 214.741.1970