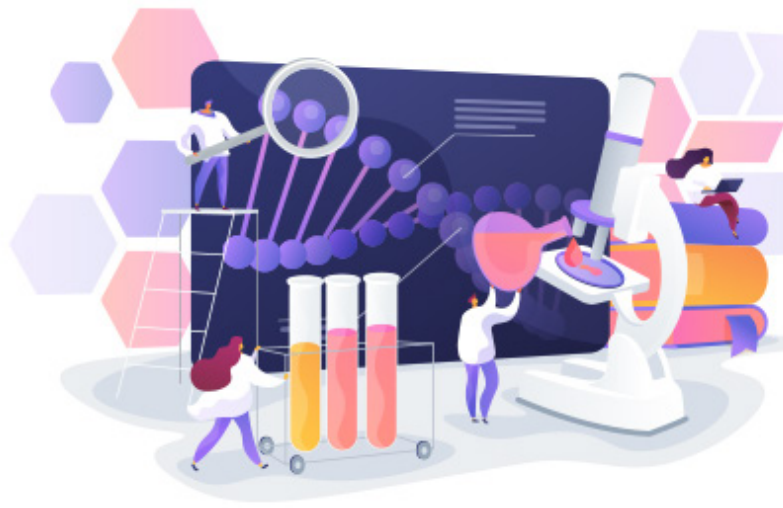


# TC Shield

COVID-19 has caused a tremendous disruption in the way we work. As employers begin to re-open their doors, they'll need the right tools & services to ensure the health & safety of their employees.

TouchCare Shield provides employees with a centralized solution for healthcare navigation, virtual doctor visits, and access to valuable COVID antibody testing.



## Virtual Medical Consultations

TouchCare Shield comes bundled with VirtualCare. Medical professionals will be available to virtually consult with members, monitor symptoms, and prescribe testing.

## COVID-19 Antibody Testing

Our unique relationship with two of the nation's largest testing facilities means our doctors can prescribe antibody tests, administered safely and at no cost to employees.

## Concierge Support

TouchCare's compassionate concierge services ensure members are never alone through the process. Our Health Assistants are available to provide expert support.

### What will be tested?

This test will only be a blood measure of COVID-19 IgG and no other immunoglobulin antibody levels (e.g., IgM, IgA, etc.)

### How accurate is the test?

The Positive Predictive Value (PPV) of a single positive COVID-19 antibody test ranges from 15 – 46% as per current data evaluated by the FDA. A second positive COVID-19 IgG antibody test increases the PPV to 95 – 99%.

### Who qualifies for testing?

The COVID-19 IgG antibody can be ordered for patients who are asymptomatic, but believe they may have come into contact with the virus in the past.

### What does 'positive' mean?

Medical research states that if you have COVID-19 antibodies, you may have some protection from COVID-19 infection. Protection is NOT guaranteed.

*ADDITIONAL EMPLOYEE TELETHERAPY SUPPORT AVAILABLE THROUGH MINDCARE.*