

PrimeSight™ 



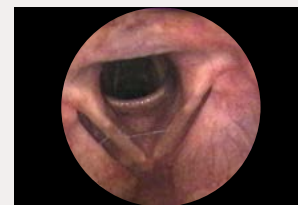
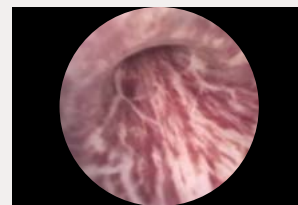
HD Rigid Endoscopy

primesightendoscopy.com

Cogentix
Medical

PrimeSight™ Rigid Endoscopy

Cogentix Medical HD Rigid Endoscopy portfolio features high quality, stainless steel scopes that fit perfectly into any practice or facility. HD scopes have better color reproduction, sharper image, and a significant depth of field compared to traditional endoscopes.



PrimeSight STR-5000 Stroboscopy Unit
Requires SLS-1000 LED Light Source
Catalog No: 07-5075 (for use with rigid scopes)
Catalog No: 07-5070

PrimeSight DPU-7000A Digital Processing Unit
Catalog No: 07-7001

PrimeSight XLS-3000 Xenon Light Source
Catalog No: 07-3020



PrimeSight DCH-5000 Digital Camera
Catalog No: 07-5010 (NTSC) 07-5011 (PAL)

CYSTOSCOPES



Catalog No.08-4203

CSR-2900 CYSTOSCOPE TECHNICAL SPECIFICATIONS
Working Length: 302mm
Working Diameter: 2.9mm
Direction of View: 0°
Field of View: 88° ± 7°
Reprocessing Method: Autoclavable



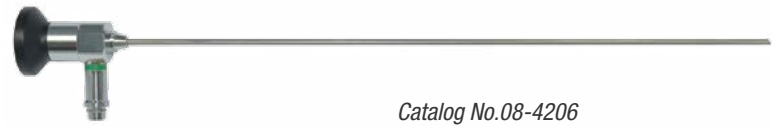
Catalog No.08-4204

CSR-2930 CYSTOSCOPE TECHNICAL SPECIFICATIONS
Working Length: 302mm
Working Diameter: 2.9mm
Direction of View: 30°
Field of View: 88° ± 7°
Reprocessing Method: Autoclavable



Catalog No.08-4205

CSR-4000 CYSTOSCOPE TECHNICAL SPECIFICATIONS
Working Length: 302mm
Working Diameter: 4.0mm
Direction of View: 0°
Field of View: 80° ± 5°
Reprocessing Method: Autoclavable



Catalog No.08-4206

CSR-4012 CYSTOSCOPE TECHNICAL SPECIFICATIONS
Working Length: 302mm
Working Diameter: 4.0mm
Direction of View: 12°
Field of View: 67° ± 5°
Reprocessing Method: Autoclavable



Catalog No.08-4207

CSR-4030 CYSTOSCOPE TECHNICAL SPECIFICATIONS
Working Length: 302mm
Working Diameter: 4.0mm
Direction of View: 30°
Field of View: 67° ± 5°
Reprocessing Method: Autoclavable



Catalog No.08-4208

CSR-4070 CYSTOSCOPE TECHNICAL SPECIFICATIONS
Working Length: 302mm
Working Diameter: 4.0mm
Direction of View: 70°
Field of View: 80° ± 5°
Reprocessing Method: Autoclavable

LARYNGOSCOPES



Catalog No.02-4317

ENT-1070 LARYNGOSCOPE TECHNICAL SPECIFICATIONS
Working Length: 173mm
Working Diameter: 10mm
Direction of View: 70°
Field of View: 60° ± 5°
Reprocessing Method: Autoclavable



Catalog No.02-4316

ENT-1090 LARYNGOSCOPE TECHNICAL SPECIFICATIONS
Working Length: 168mm
Working Diameter: 10mm
Direction of View: 90°
Field of View: 43° ± 5°
Reprocessing Method: Soakable

OTOSCOPES



Catalog No.02-4304

OTO-2700 OTOSCOPE TECHNICAL SPECIFICATIONS
Working Length: 34mm
Working Diameter: 2.7mm
Direction of View: 0°
Field of View: 55° ± 7°
Reprocessing Method: Soakable



Catalog No.02-4305

OTO-2701* OTOSCOPE TECHNICAL SPECIFICATIONS
Working Length: 34mm
Working Diameter: 2.7mm
Direction of View: 0°
Field of View: 55° ± 7°
Reprocessing Method: Soakable



Catalog No.02-4302

OTO-4000 OTOSCOPE TECHNICAL SPECIFICATIONS
Working Length: 50mm
Working Diameter: 4.0mm
Direction of View: 0°
Field of View: 90° ± 5°
Reprocessing Method: Soakable



Catalog No.02-4303

OTO-4030 OTOSCOPE TECHNICAL SPECIFICATIONS
Working Length: 50mm
Working Diameter: 4.0mm
Direction of View: 30°
Field of View: 90° ± 5°
Reprocessing Method: Soakable

OTO-1000 EAR SPECULUM SPECIFICATIONS

*Ear speculum for OTO-2701 Otoscope
Catalog No.02-4306

SINUSCOPES



Catalog No.02-4314



Catalog No.02-4315



Catalog No.02-4307



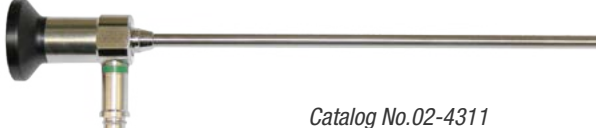
Catalog No.02-4308



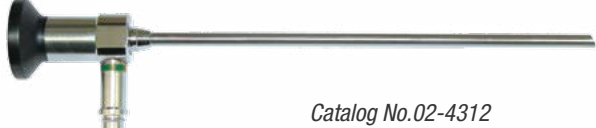
Catalog No.02-4309



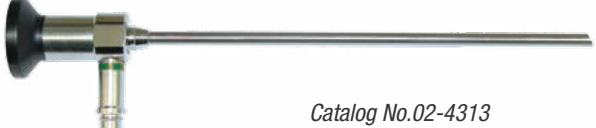
Catalog No.02-4310



Catalog No.02-4311



Catalog No.02-4312



Catalog No.02-4313

SNU-2000 SINUSCOPE TECHNICAL SPECIFICATIONS

Working Length: 110mm
 Working Diameter: 2.0mm
 Direction of View: 0°
 Field of View: Wide Angle
 Reprocessing Method: Autoclavable

SNU-2030 SINUSCOPE TECHNICAL SPECIFICATIONS

Working Length: 110mm
 Working Diameter: 2.0mm
 Direction of View: 30°
 Field of View: Wide Angle
 Reprocessing Method: Autoclavable

SNU-2700 SINUSCOPE TECHNICAL SPECIFICATIONS

Working Length: 110mm
 Working Diameter: 2.7mm
 Direction of View: 0°
 Field of View: 95° - 5° +10°
 Reprocessing Method: Autoclavable

SNU-2730 SINUSCOPE TECHNICAL SPECIFICATIONS

Working Length: 110mm
 Working Diameter: 2.7mm
 Direction of View: 30°
 Field of View: 87° - 5° +10°
 Reprocessing Method: Autoclavable

SNU-2770 SINUSCOPE TECHNICAL SPECIFICATIONS

Working Length: 110mm
 Working Diameter: 2.7mm
 Direction of View: 70°
 Field of View: 82° ± 5°
 Reprocessing Method: Autoclavable

SNU-4000 SINUSCOPE TECHNICAL SPECIFICATIONS

Working Length: 175mm
 Working Diameter: 4.0mm
 Direction of View: 0°
 Field of View: 102° ± 5°
 Reprocessing Method: Autoclavable

SNU-4030 SINUSCOPE TECHNICAL SPECIFICATIONS

Working Length: 175mm
 Working Diameter: 4.0mm
 Direction of View: 30°
 Field of View: 100° ± 5°
 Reprocessing Method: Autoclavable

SNU-4045 SINUSCOPE TECHNICAL SPECIFICATIONS

Working Length: 175mm
 Working Diameter: 4.0mm
 Direction of View: 45°
 Field of View: 95° ± 5°
 Reprocessing Method: Autoclavable

SNU-4070 SINUSCOPE TECHNICAL SPECIFICATIONS

Working Length: 175mm
 Working Diameter: 4mm
 Direction of View: 70°
 Field of View: 100° - 5° +10°
 Reprocessing Method: Autoclavable

Connect with Cogentix Medical



Rx Only. PrimeSight is a trademark of Cogentix Medical. © 2015 Cogentix Medical. All rights reserved.
 70023A 11/15

Cogentix Medical

Cogentix Medical
 5420 Feltl Road
 Minnetonka, MN 55343

cogentixmedical.com

TEL 866.258.2182
 FAX 866.255.4522