

MOONEY AIRCRAFT, INC.

SERVICE LETTER 20-53

(This Service Letter is FAA Approved)

DATE: NOVEMBER 16, 1959  
SUBJECT: INSPECTION OF BATTERY CABLES AND MODIFICATION OF BATTERY BOX  
MODELS AFFECTED: M-20 - M-20A Serial Nos. 1002-1453  
TIME OF COMPLIANCE: NEXT TIME SIDE COWL IS REMOVED

INTRODUCTION

Due to variation in the height of the batteries used in the aircraft noted above, some battery cables may be worn at the points where the cables enter the battery box, and it is therefore necessary that the following inspection be accomplished.

INSTRUCTIONS

1. Remove left hand side cowl.
2. Remove battery box cover and disconnect the cables from battery poles.
3. Lift cables and grommets from battery box.
4. Inspect grommets and cables for cuts or wear. Replace or repair worn parts.
5. Figures 1 and 2 show a recommended rework for installations where battery cables are bearing too heavily against battery box.

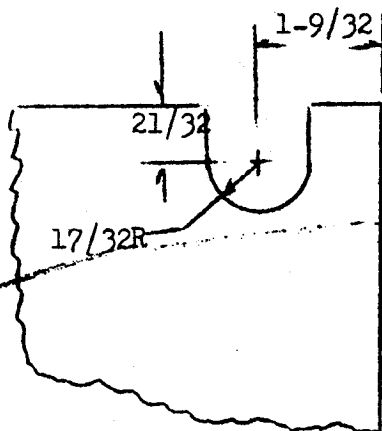


Figure No. 1

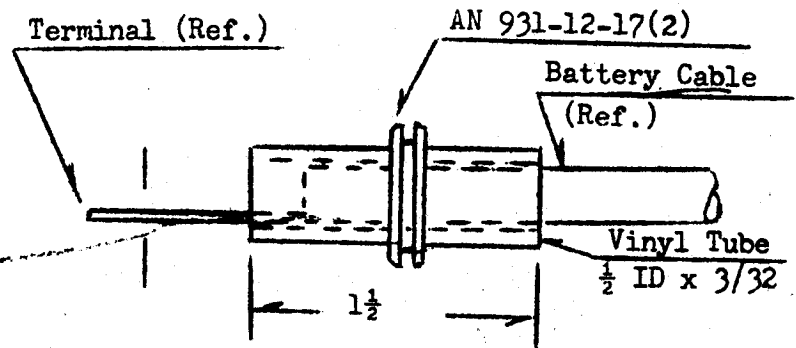


Figure No. 2

INSTALL VINYL TUBING  
AND GROMMET AS SHOWN

BATTERY BOX MODIFICATION - ENLARGE  
GROMMET SLOTS (2) TO DIMENSIONS SHOWN