



A QUALICO Company

BRISBANE

861 PLAN

Highlighted Features Include:

- Covered front porch and deck
- Open concept kitchen and great room
- Dedicated dining room with large window
- Kitchen island with breakfast bar
- Master bedroom with large walk-in closet and 3-piece ensuite
- Large family room upstairs
- Optional deluxe ensuite and basement plan
- Natural gas high-efficiency furnace
- Premium trim work
- Decora switches
- Triple pane and dual pane low-e windows
- LED lighting package
- Moen faucets, including high-arc kitchen faucet in chrome finish
- 20' x 22' oversized garage
- Industry leading standard features
- 1-2-5-10 National Home Warranty



2 Storey



2 1/2 Bathrooms



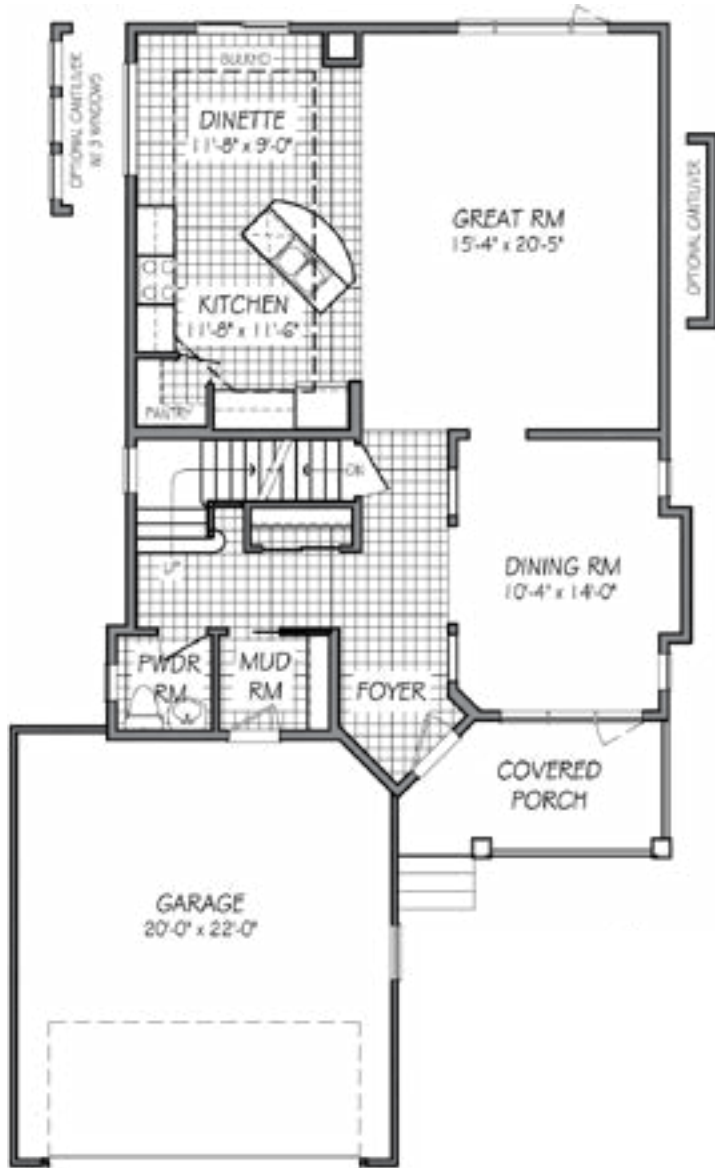
3 Bedrooms



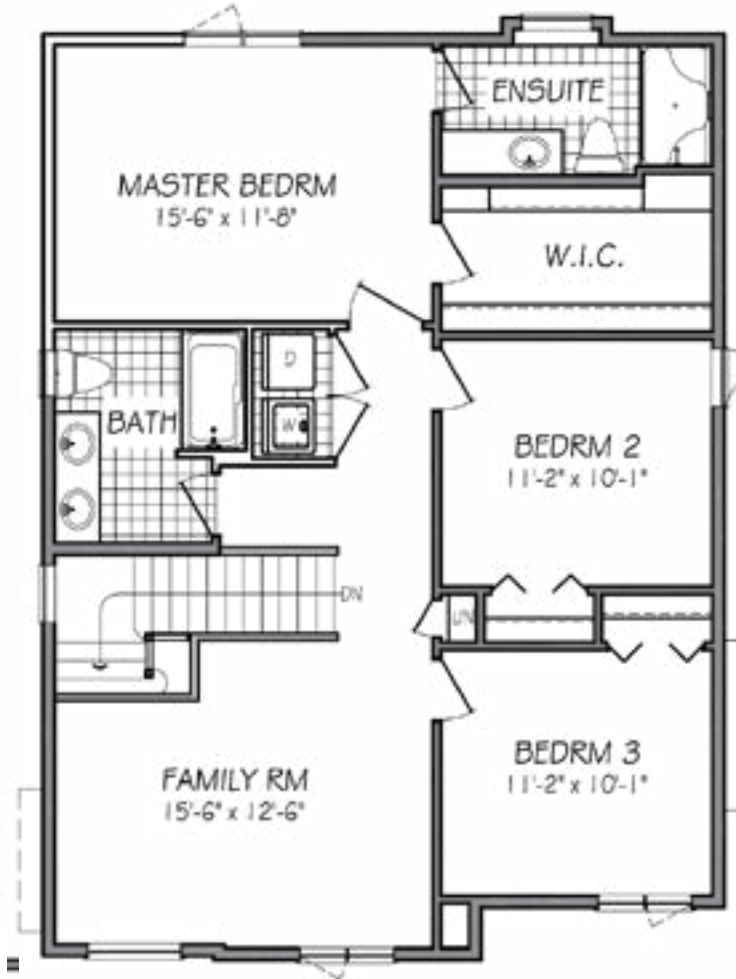
2089 sq. ft.



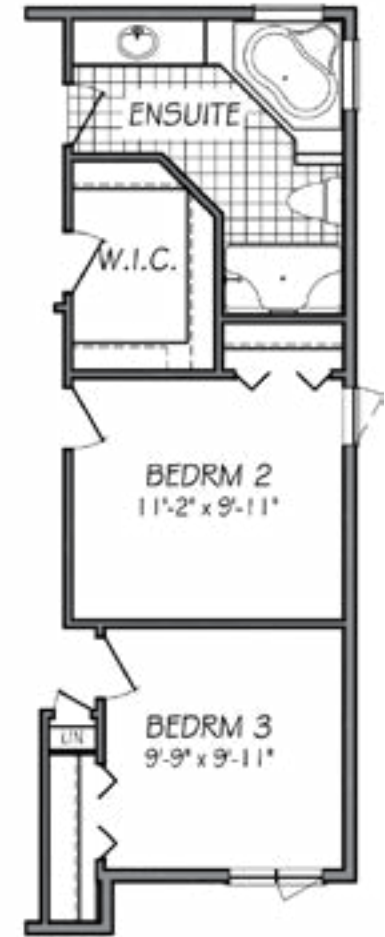
861 PLAN



MAIN FLOOR PLAN
1048 SQ. FT.



SECOND FLOOR PLAN
1041 SQ. FT.



OPT'L DELUXE ENSUITE

One Dr. David Friesen Drive
Winnipeg, Manitoba

Phone: (204) 224-4243
kensingtonhomes.com

All illustrations are artist's conception and may vary. Room dimensions are approximate. Windows and room sizes may vary with elevations. Mechanical equipment location and placement subject to change as required by building code and at discretion of builder. Furniture outlines for purpose of visualizing room layout only, furniture not included. Kensington Homes reserves the right to change material or specifications without notice.

