



A QUALICO Company

# GRANDVIEW

329 PLAN

## Highlighted Features Include:

- Front elevation with stucco, vinyl and smart trim
- Open concept main floor layout
- Main floor powder room
- Raised ceilings in the dining room
- Main floor flex room, ideal for home office or study
- Gourmet kitchen with walk-in pantry
- Large walk-in closet and ensuite in master bedroom
- 20' - 22' attached garage
- Industry leading standard features
- Moen faucets
- LED lighting package
- Natural gas high-efficiency furnace
- Premium trim work
- Decora switches
- Triple pane & dual pane low-e windows
- 1-2-5-10 National Home Warranty

Elevation B



Not exactly as shown. Final drawings and elevation details are per offer to purchase and subject to architectural approval.



2 Storey



3 Bedrooms



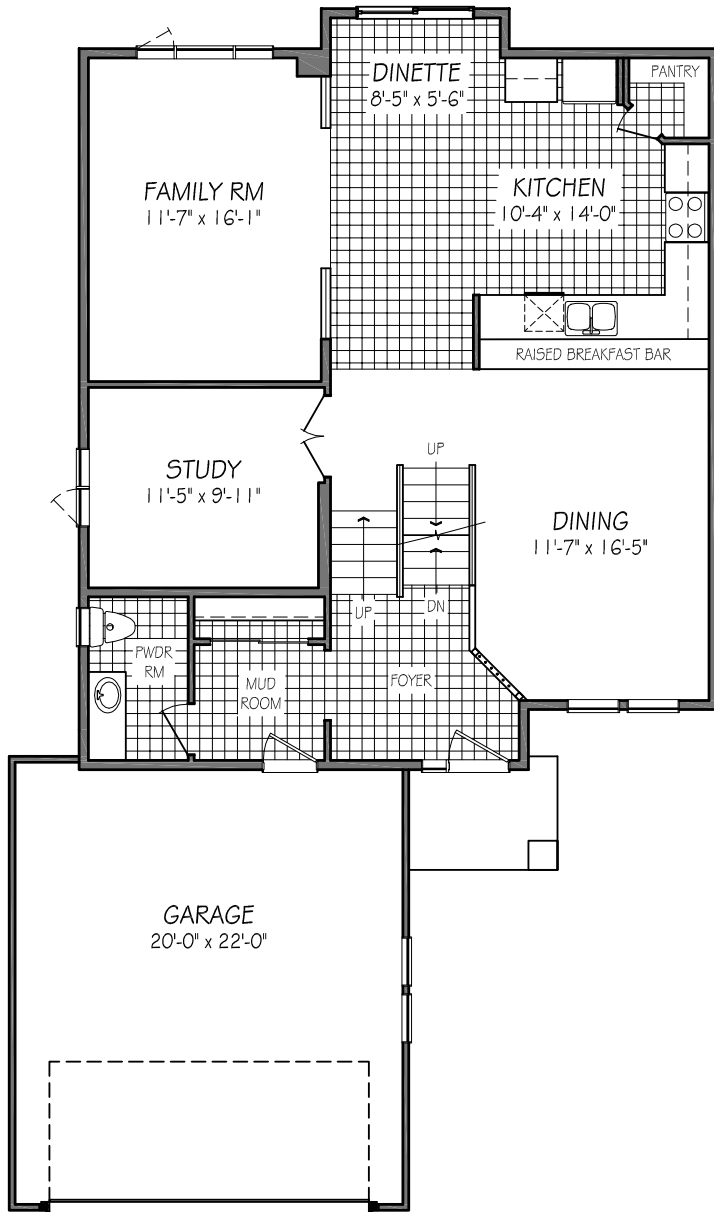
2 1/2 Bathrooms



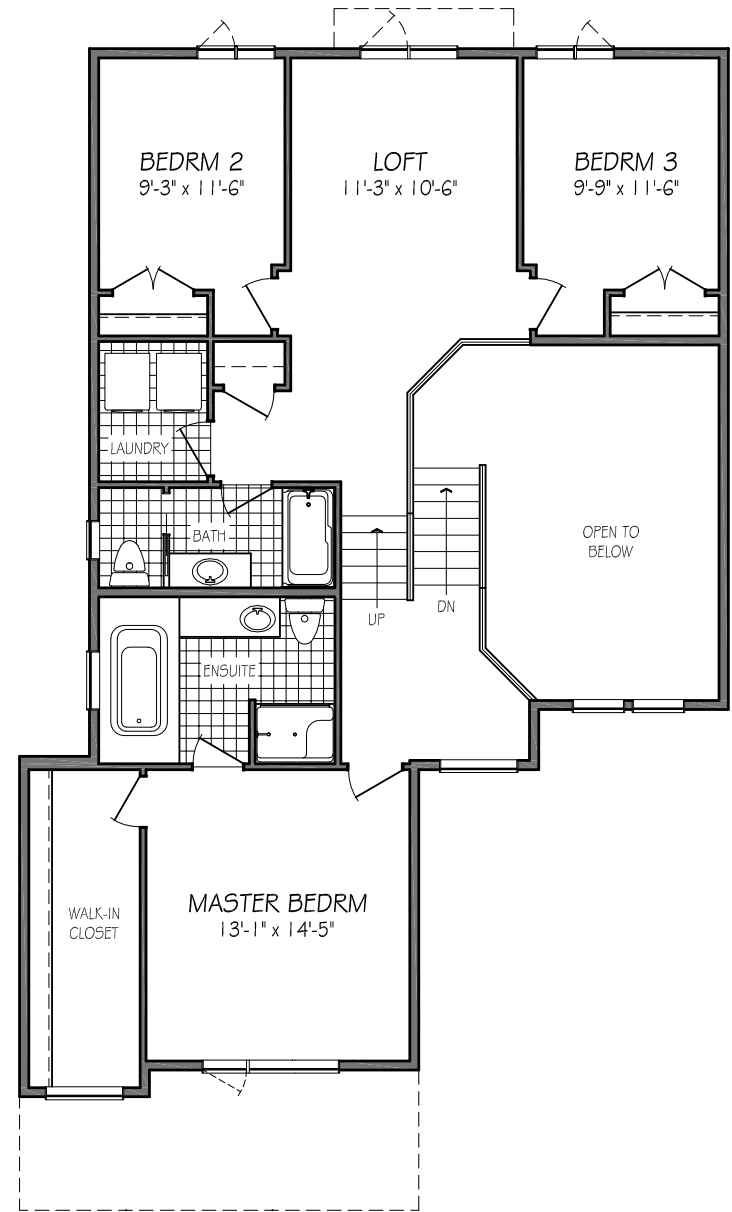
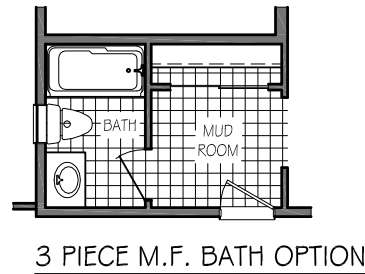
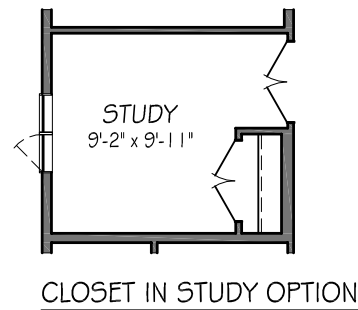
2340 sq. ft.

OVER 45 YEARS OF BUILDING QUALITY HOMES

# 329 PLAN



MAIN FLOOR PLAN  
1142 SQ. FT.



MAIN FLOOR PLAN  
1198 SQ. FT.

One Dr. David Friesen Drive  
Winnipeg, Manitoba

Phone: (204) 224-4243  
kensingtonhomes.com

All illustrations are artist's conception and may vary. Room dimensions are approximate. Windows and room sizes may vary with elevations. Mechanical equipment location and placement subject to change as required by building code and at discretion of builder. Furniture outlines for purpose of visualizing room layout only, furniture not included. Kensington Homes reserves the right to change material or specifications without notice.

