



A QUALICO Company

MADISON II

941 PLAN

Elevation B

Not exactly as shown. Final drawings and elevation details are per offer to purchase and subject to architectural approval.



Highlighted Features Include:

- Exterior includes stone, vinyl, stucco and smart trim
- Large designer kitchen with island, breakfast bar, and corner pantry
- Spacious master bedroom with large walk-in closet and ensuite
- 20' x 22' double car garage
- Industry leading standard features
- LED lighting package
- Moen Faucets
- Natural gas high-efficiency furnace
- Premium trim work
- Decora switches
- Triple pane & dual pane low-e windows
- 1-2-5-10 National Home Warranty
- Variety of floor plan options to choose from



2 Storey



3 Bedrooms



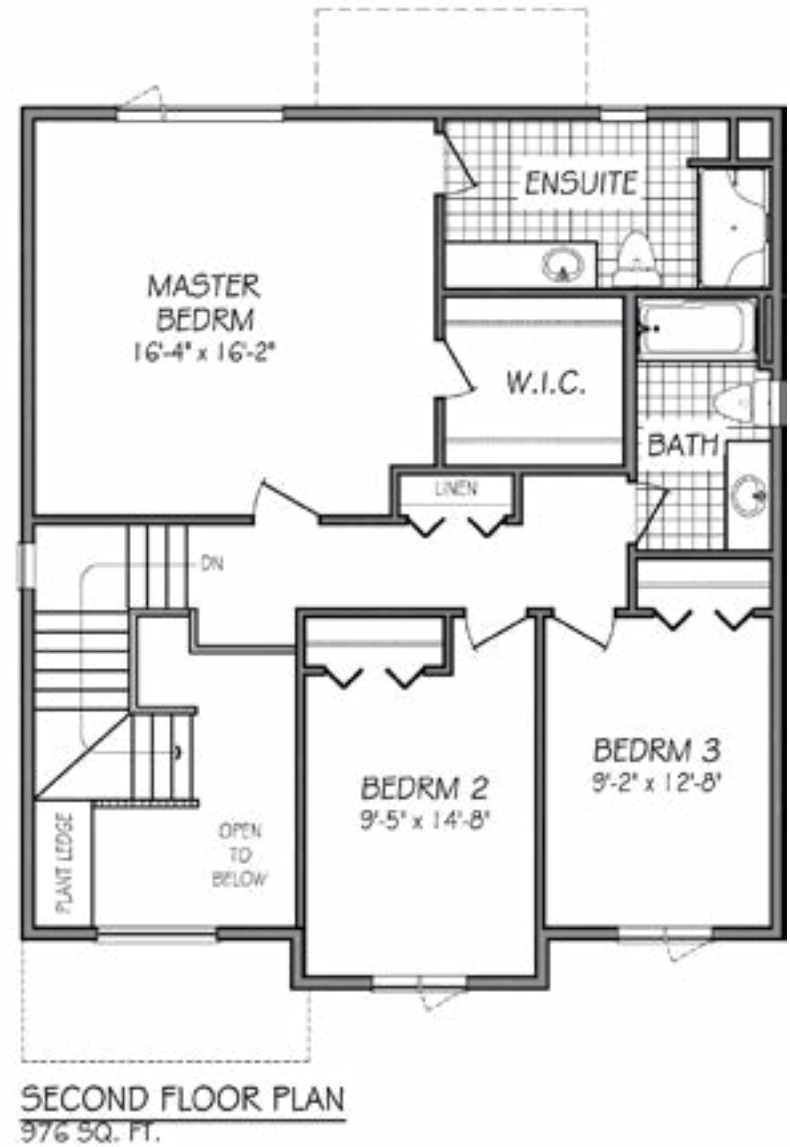
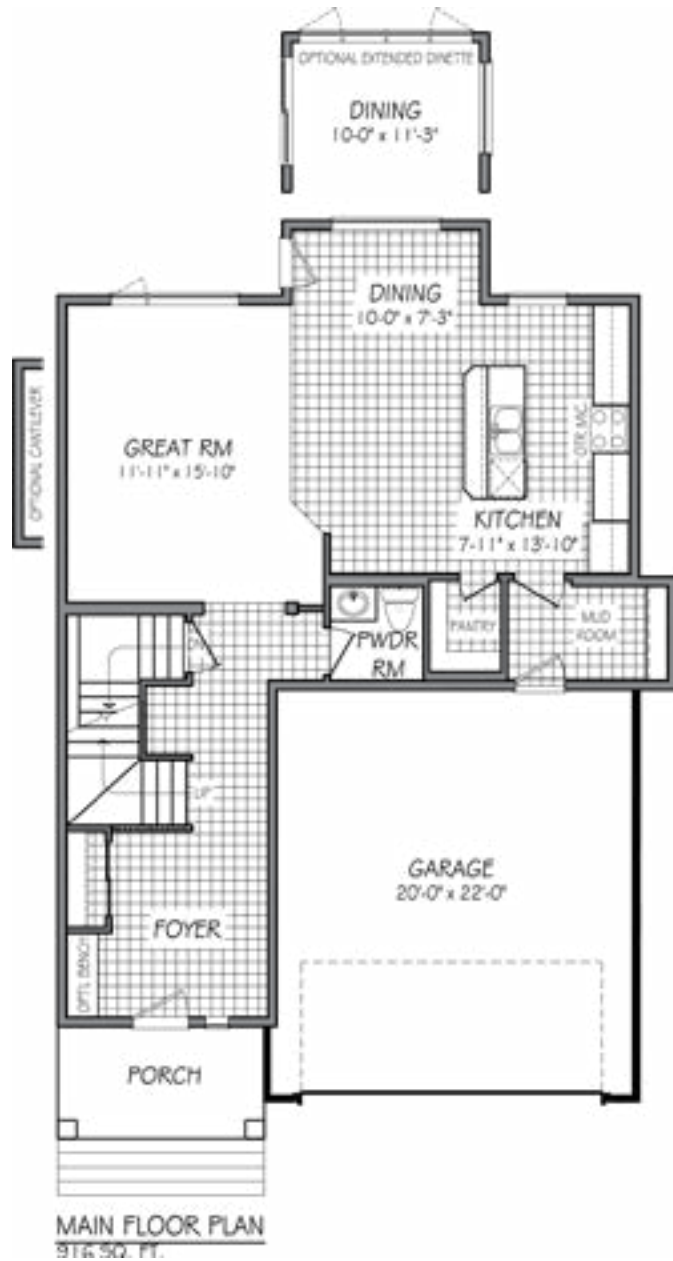
2 1/2 Bathrooms



1892 sq. ft.

OVER 45 YEARS OF BUILDING QUALITY HOMES

941 PLAN



One Dr. David Friesen Drive
Winnipeg, Manitoba

Phone: (204) 224-4243
kensingtonhomes.com

All illustrations are artist's conception and may vary. Room dimensions are approximate. Windows and room sizes may vary with elevations. Mechanical equipment location and placement subject to change as required by building code and at discretion of builder. Furniture outlines for purpose of visualizing room layout only, furniture not included. Kensington Homes reserves the right to change material or specifications without notice.

