



A QUALICO Company

MANCHESTER

326 PLAN

Highlighted Features Include:

- Front elevation with stucco and smart trim
- Open concept main floor layout
- Raised ceilings in great room and dining room
- Main floor flex room, ideal for home office or study
- Gourmet kitchen with walk-in pantry
- Large closet space and ensuite in master bedroom
- 18' x 20' attached garage
- Industry leading standard features
- Moen faucets
- LED lighting package
- Natural gas high-efficiency furnace
- Premium trim work
- Decora switches
- Triple pane & dual pane low-e windows, as per plan
- 1-2-5-10 National Home Warranty



2 Storey



2 1/2 Bathrooms



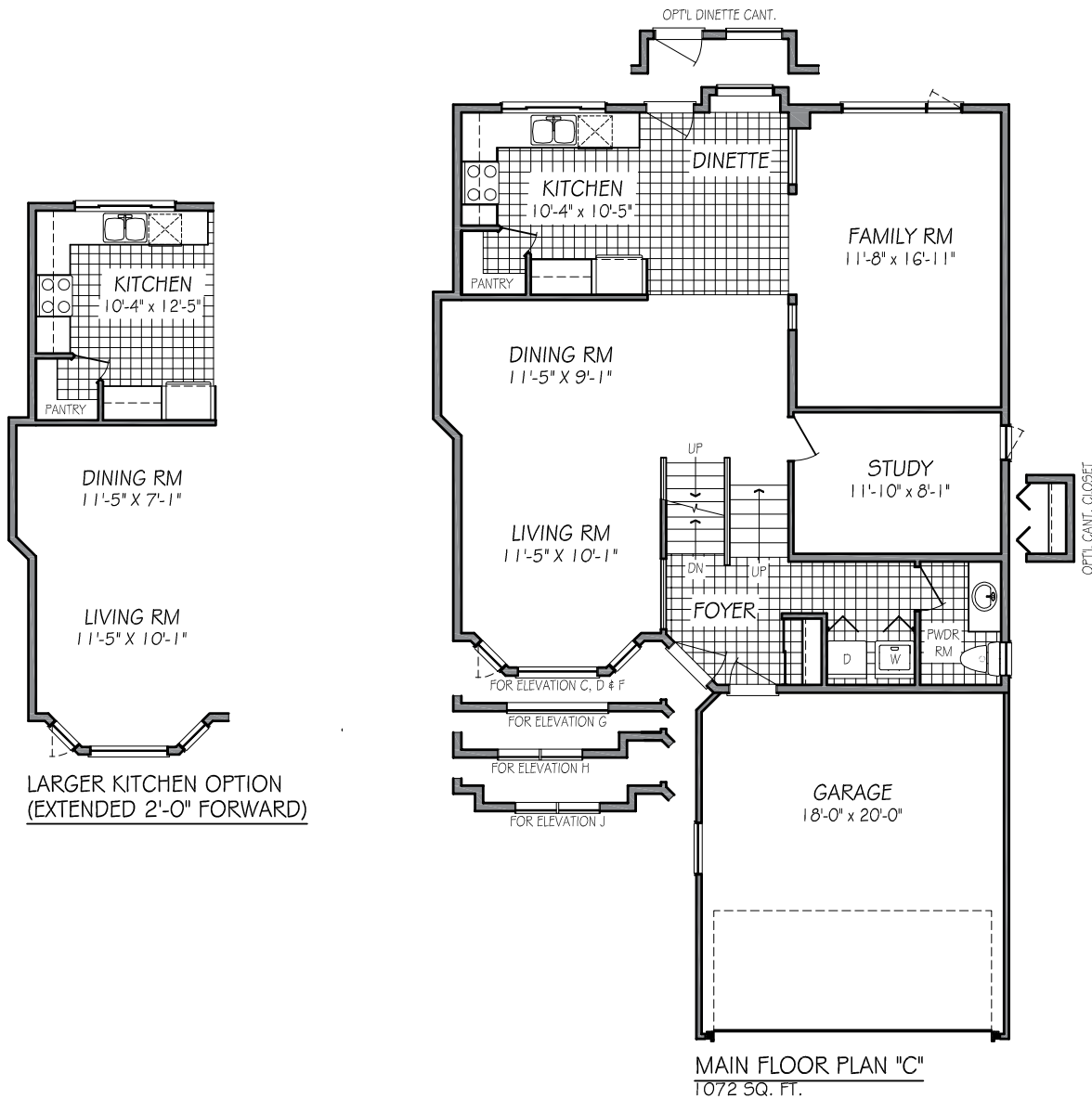
3 Bedrooms



1847 sq. ft.



326 PLAN



One Dr. David Friesen Drive
Winnipeg, Manitoba

Phone: (204) 224-4243
kensingtonhomes.com

All illustrations are artist's conception and may vary. Room dimensions are approximate. Windows and room sizes may vary with elevations. Mechanical equipment location and placement subject to change as required by building code and at discretion of builder. Furniture outlines for purpose of visualizing room layout only, furniture not included. Kensington Homes reserves the right to change material or specifications without notice.



A QUALICO Company