



A QUALICO Company

PRAIRIEHAVEN

825 PLAN

Highlighted Features Include:

- Cultured stone, stucco, and smart trim exterior details
- 20' x 22' double car garage
- Open concept kitchen with island, breakfast bar, and walk-in pantry
- Main floor study and large foyer
- Main floor laundry room / mudroom
- Great room with open ceiling
- Spacious master bedroom with walk-in closet and ensuite
- Variety of floor plan options to choose from, such as 4th bedroom and laundry option, or walk-thru pantry, etc.
- Industry leading standards
- Decora switches
- LED lighting package
- Moen faucets
- Natural gas high-efficiency furnace
- Triple pane and dual pane low-e windows
- Premium trim work
- 1-2-5-10 National Home Warranty

Elevation A



Not exactly as shown. Final drawings and elevation details are per offer to purchase and subject to architectural approval.

Elevation B



2 Storey



2 1/2 Bathrooms

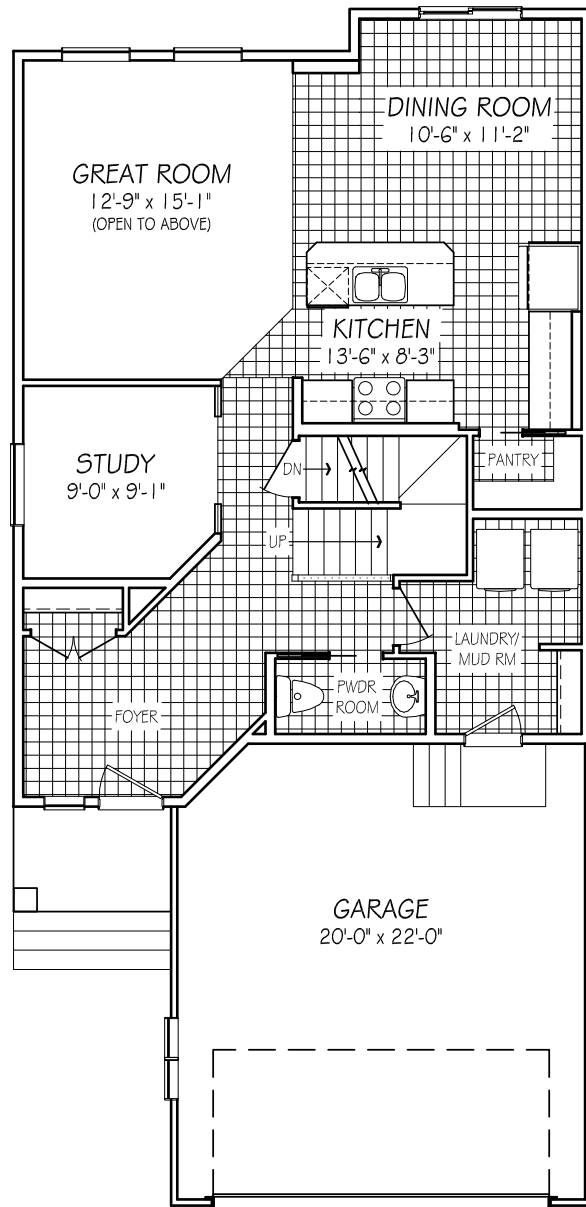


3 Bedrooms

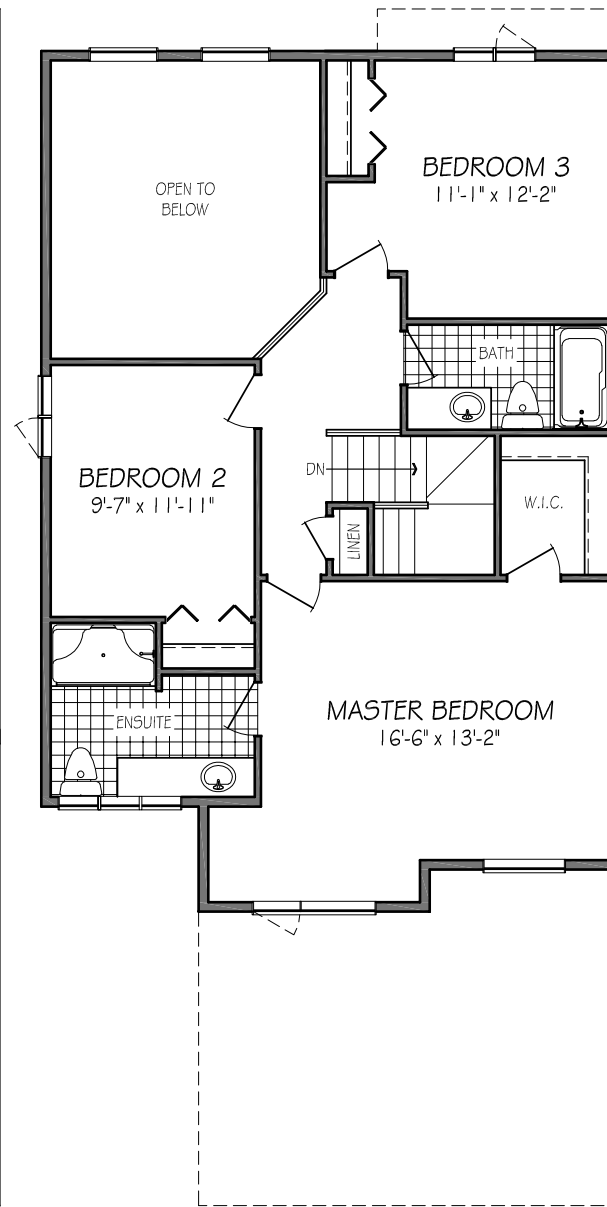


1841 sq. ft.

825 PLAN



MAIN FLOOR PLAN
959 SQ. FT.



SECOND FLOOR PLAN
882 SQ. FT.

One Dr. David Friesen Drive
Winnipeg, Manitoba

Phone: (204) 224-4243
kensingtonhomes.com

All illustrations are artist's conception and may vary. Room dimensions are approximate. Windows and room sizes may vary with elevations. Mechanical equipment location and placement subject to change as required by building code and at discretion of builder. Furniture outlines for purpose of visualizing room layout only, furniture not included. Kensington Homes reserves the right to change material or specifications without notice.

