



2-Storey



3 Bedrooms



2 ½ Bathrooms



1603 sq. ft.

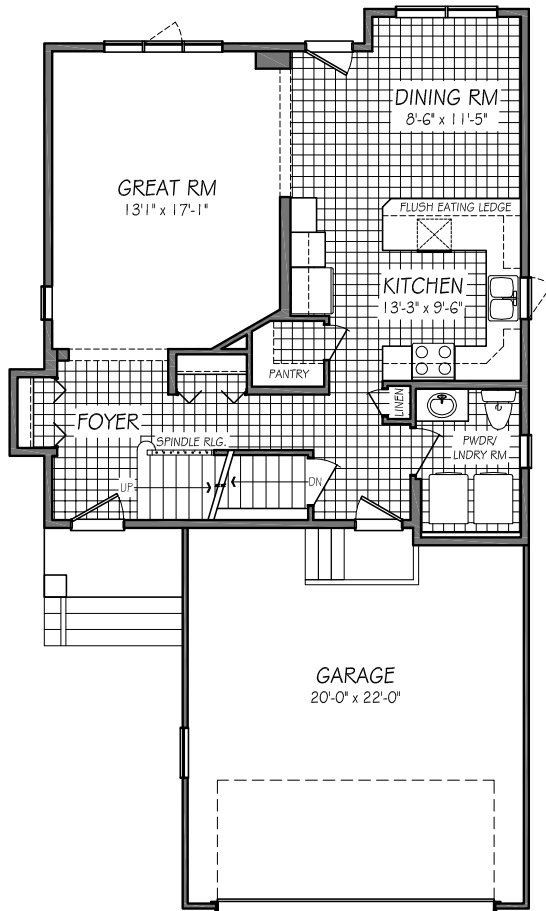
Highlighted Features Include:

- Spacious master bedroom with walk-in closet and ensuite bath
- Professionally designed cabinetry and vanities
- Breakfast bar adjacent to dining room
- Walk-in pantry
- Master bedroom with ensuite and walk-in closet
- Second floor window seats
- Pile foundation
- 20' x 22' double car garage
- 1-2-5-10 National Home Warranty

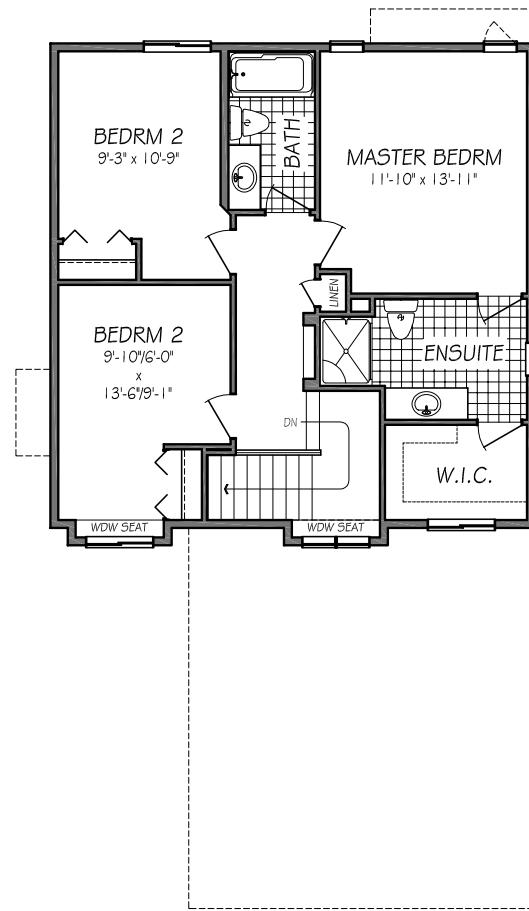


FLOOR PLAN

(b-rev3-7-18)



MAIN FLOOR PLAN
819 SQ. FT.



SECOND FLOOR PLAN
784 SQ. FT.



FLORENCE

822 PLAN

One Dr. David Friesen Drive
Winnipeg, Manitoba
R3X 0G8

Phone: (204) 224-4243
kensingtonhomes.com

All illustrations are artist's conception and may vary. Room dimensions are approximate. Windows and room sizes may vary with elevations. Mechanical equipment location and placement subject to change as required by building code and at discretion of builder. Furniture outlines for purpose of visualizing room layout only, furniture not included. Kensington Homes reserves the right to change material or specifications without notice.

