



2 Storey



3 Bedrooms



2 ½ Bathrooms



1492 sq. ft.

## Highlighted Features Include:

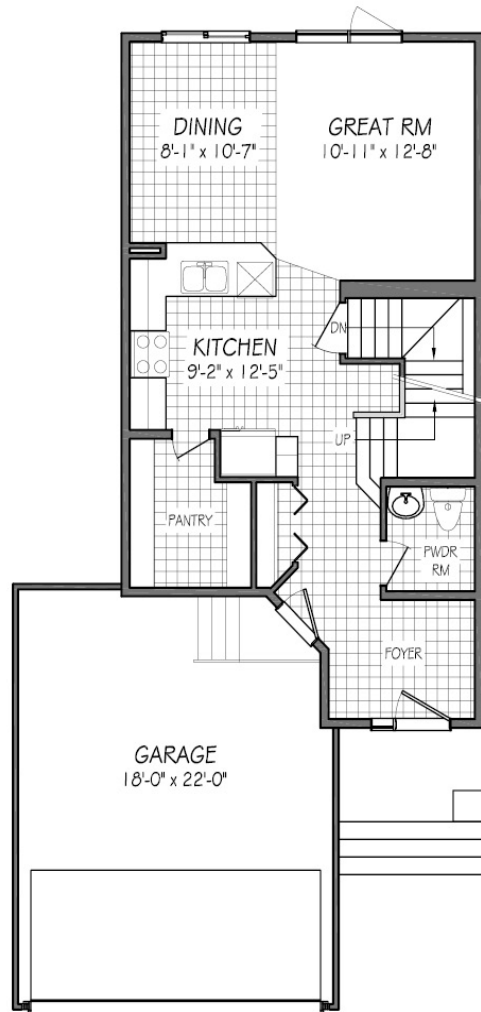
---

- Open style great room, dining room and kitchen
- Professionally designed kitchen cabinetry and vanities
- Gourmet kitchen with large walk-in pantry
- Double car garage with decorative glass inserts
- Cultured stone, vinyl shakes, and smart trim exterior details
- Industry leading standard features throughout
- 1-2-5-10 National Home Warranty



# FLOOR PLAN

(b-rev4-7-18)



**MAIN FLOOR PLAN**  
668 SQ. FT.



**SECOND FLOOR PLAN**  
824 SQ. FT.



One Dr. David Friesen Drive  
Winnipeg, Manitoba  
R3X 0G8

Phone: (204) 224-4243  
[kensingtonhomes.com](http://kensingtonhomes.com)

All illustrations are artist's conception and may vary. Room dimensions are approximate. Windows and room sizes may vary with elevations. Mechanical equipment location and placement subject to change as required by building code and at discretion of builder. Furniture outlines for purpose of visualizing room layout only, furniture not included. Kensington Homes reserves the right to change material or specifications without notice.



RIVERSIDE

730 PLAN