



2 Storey, Duplex



3 Bedrooms



2 ½ Bathrooms



1400-1494 sq. ft.

## Highlighted Features Include:

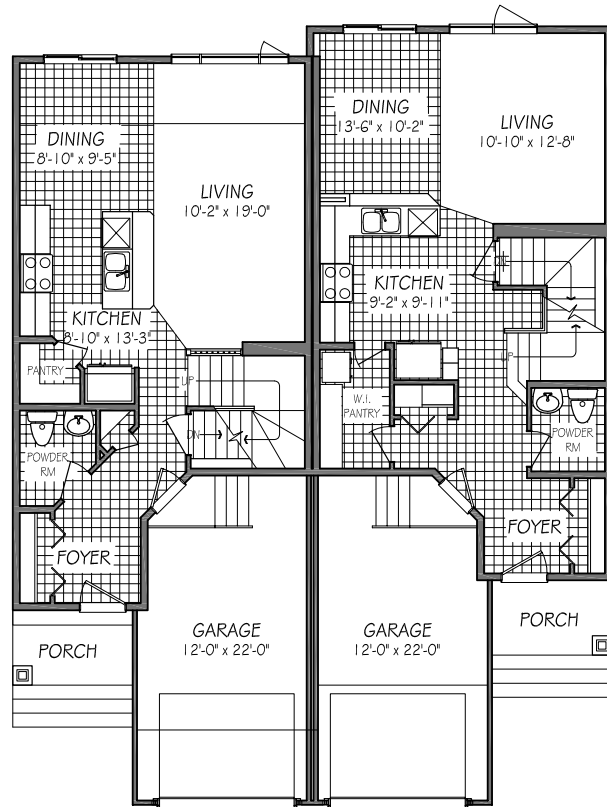
---

- Attractive exterior includes cultured stone, smart trim and vinyl siding or stucco detailing
- Two main level floor plans to choose from
- 3 bedrooms including master suite with walk-in closet and ensuite
- 22' deep attached garage with stairs
- Concrete driveway
- Pile foundation
- 1-2-5-10 National Home Warranty

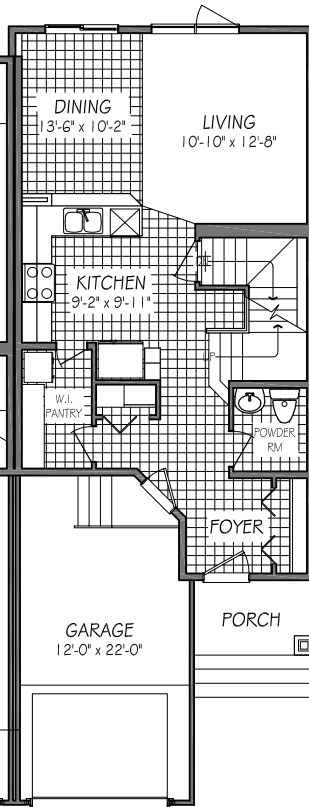


# FLOOR PLAN

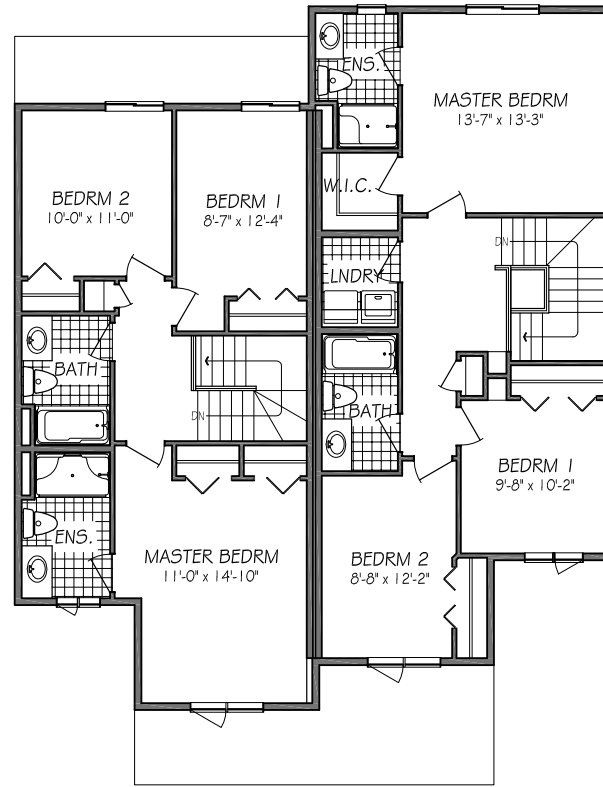
(b-rev4-7-18)



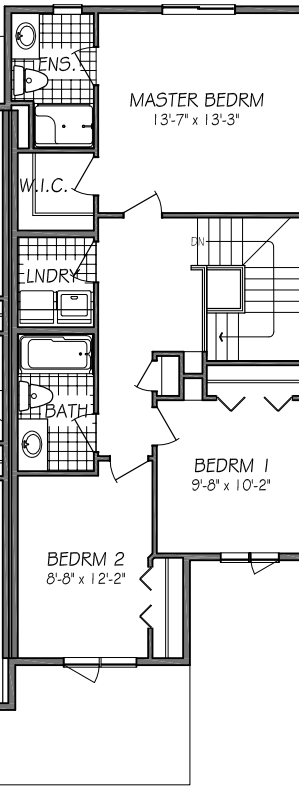
MAIN FLOOR PLAN  
645 SQ. FT.



MAIN FLOOR PLAN  
668 SQ. FT.



SECOND FLOOR PLAN  
755 SQ. FT.



SECOND FLOOR PLAN  
826 SQ. FT.



One Dr. David Friesen Drive  
Winnipeg, Manitoba  
R3X 0G8

Phone: (204) 224-4243  
kensingtonhomes.com

All illustrations are artist's conception and may vary. Room dimensions are approximate. Windows and room sizes may vary with elevations. Mechanical equipment location and placement subject to change as required by building code and at discretion of builder. Furniture outlines for purpose of visualizing room layout only, furniture not included. Kensington Homes reserves the right to change material or specifications without notice.



RIVERSTONE

2830 PLAN