



2-Storey Duplex



3 Bedrooms



2 ½ Bathrooms



1433-1529 sq. ft.

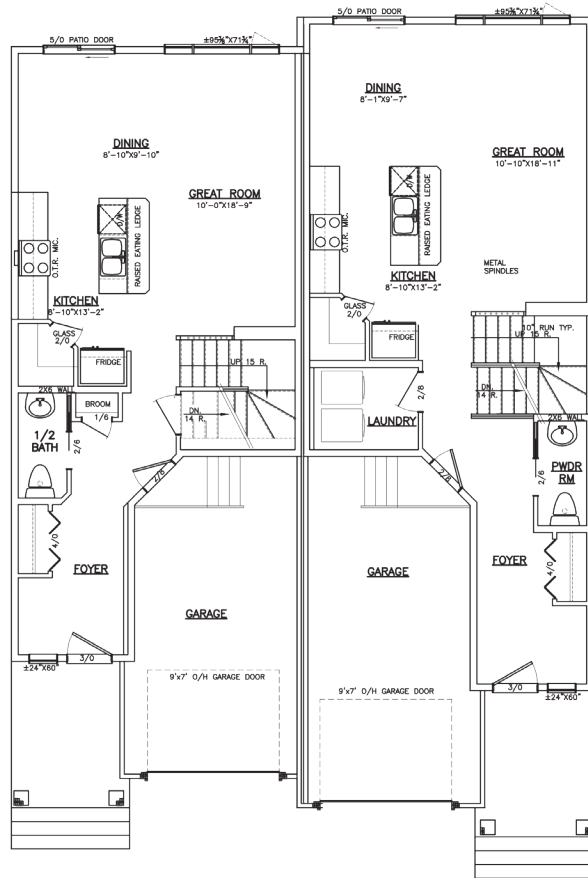
Highlighted Features Include:

- Open concept main floor layout
- Stone, vinyl siding, and smart trim details.
- Main floor powder room
- Walk-in corner pantry and kitchen island with breakfast bar
- Large closet space and ensuite in master bedroom
- 22' - 24' deep attached garage
- Concrete driveway and sidewalk
- Pile Foundation
- 1-2-5-10 National Home Warranty



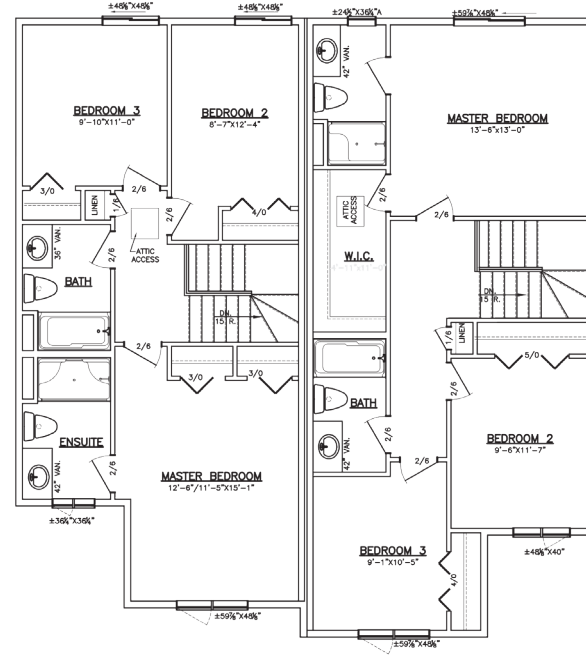
FLOOR PLAN

(b-revl-7-18)



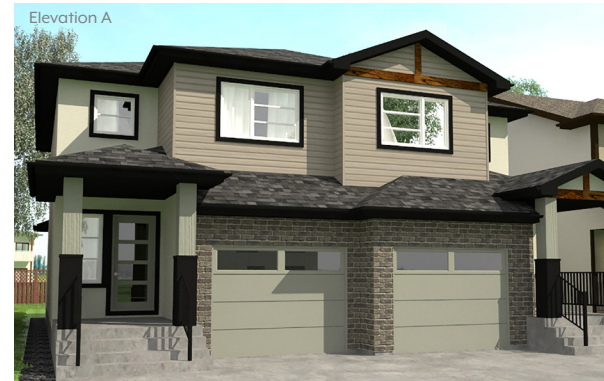
MAIN FLOOR PLAN—UNIT 1
AREA: 680 SQ.FT.

MAIN FLOOR PLAN—UNIT 2
AREA: 737 SQ.FT.



UPPER FLOOR PLAN—UNIT 1
AREA: 753 SQ.FT.

UPPER FLOOR PLAN—UNIT 2
AREA: 792 SQ.FT.



DRIFFTWOOD

2840 PLAN

One Dr. David Friesen Drive
Winnipeg, Manitoba
R3X 0G8

Phone: (204) 224-4243
kensingtonhomes.com

All illustrations are artist's conception and may vary. Room dimensions are approximate. Windows and room sizes may vary with elevations. Mechanical equipment location and placement subject to change as required by building code and at discretion of builder. Furniture outlines for purpose of visualizing room layout only, furniture not included. Kensington Homes reserves the right to change material or specifications without notice.

