



2 Storey



3 Bedrooms



2 ½ Bathrooms



1892 sq. ft.

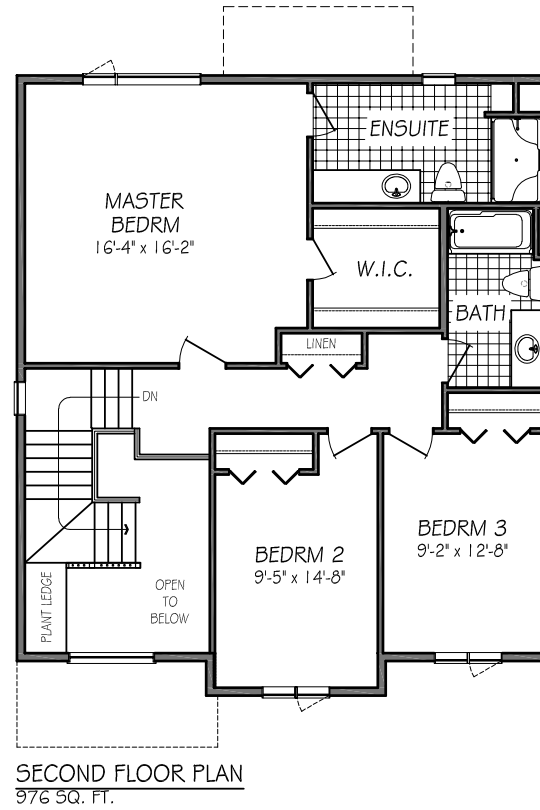
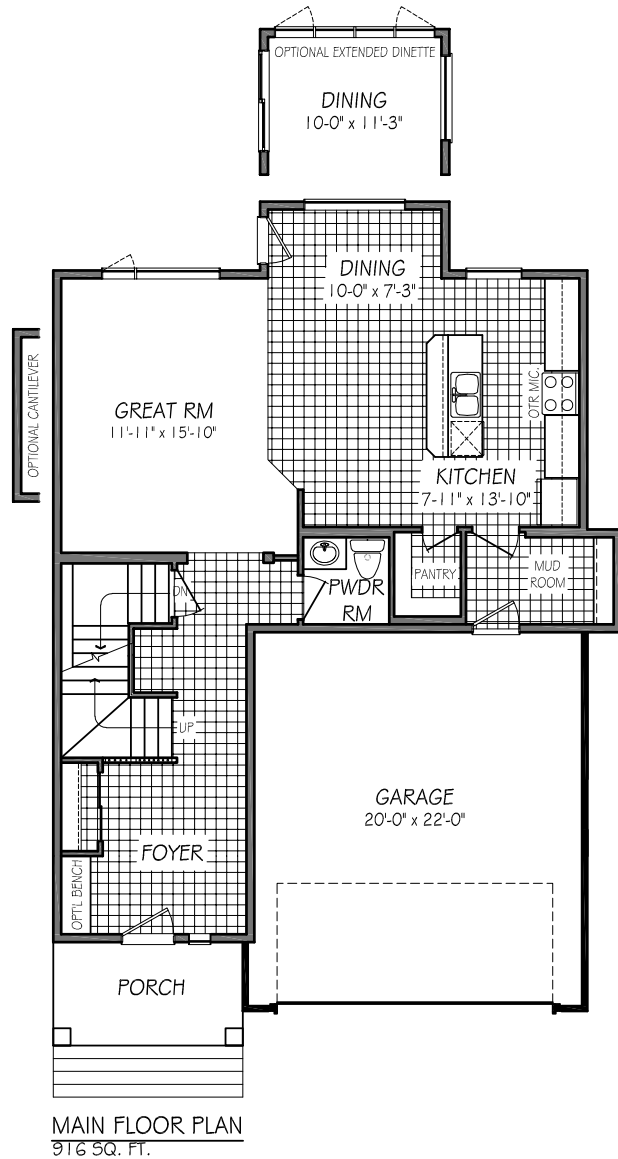
Highlighted Features Include:

- Large designer kitchen with island, breakfast bar, and corner pantry
- Spacious master bedroom with large walk-in closet and ensuite
- 20' x 22' double car garage
- 1-2-5-10 National Home Warranty
- Variety of floor plan options to choose from



FLOOR PLAN

(b-rev6-8-18)



MADISON II

941 PLAN

One Dr. David Friesen Drive
Winnipeg, Manitoba
R3X 0G8

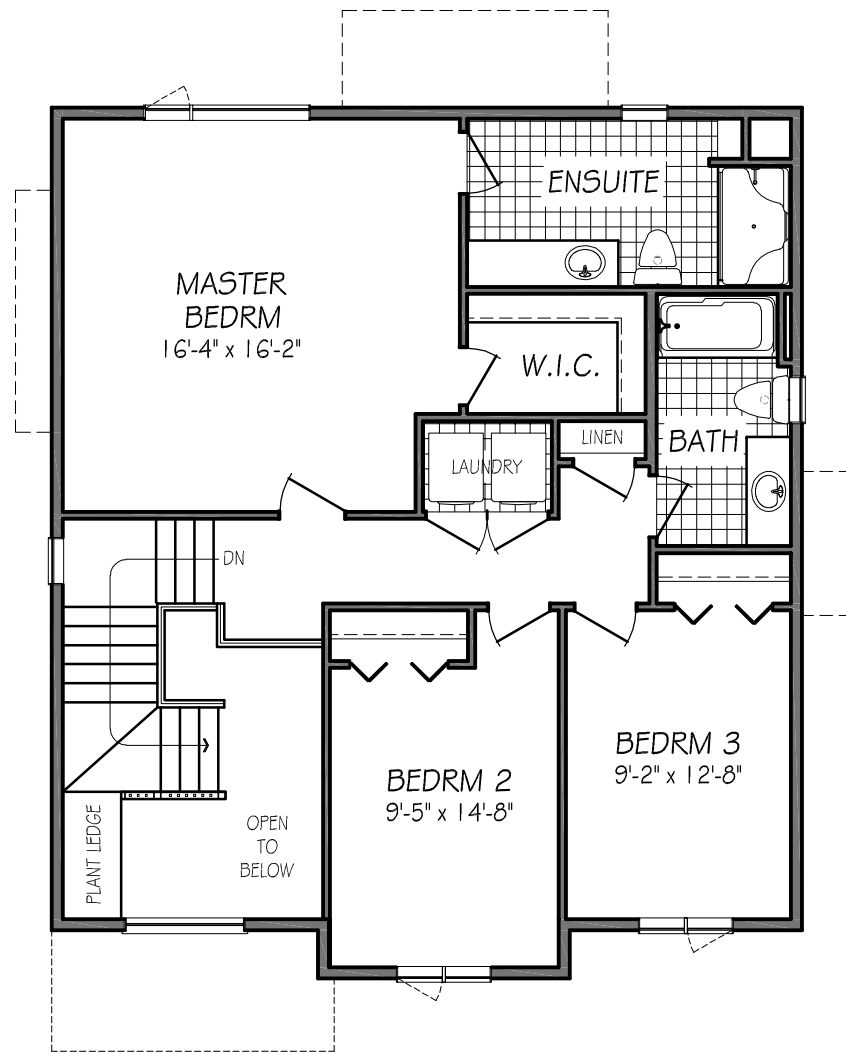
Phone: (204) 224-4243
kensingtonhomes.com

All illustrations are artist's conception and may vary. Room dimensions are approximate. Windows and room sizes may vary with elevations. Mechanical equipment location and placement subject to change as required by building code and at discretion of builder. Furniture outlines for purpose of visualizing room layout only, furniture not included. Kensington Homes reserves the right to change material or specifications without notice.

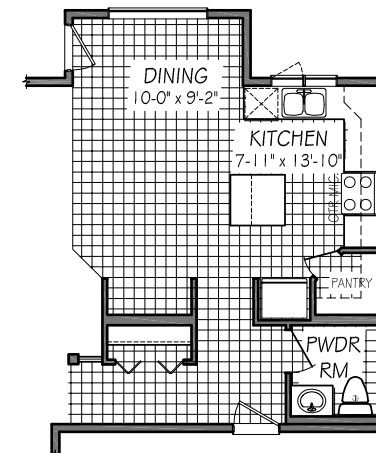


MADISON II

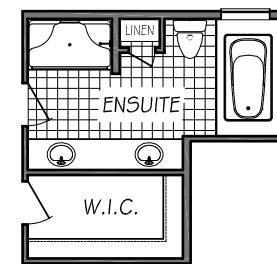
OPTIONAL FLOOR PLANS



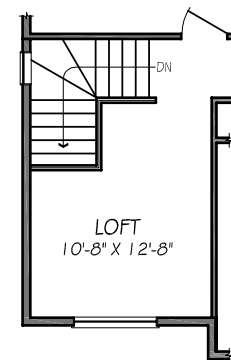
**SECOND FLOOR PLAN
(W/ SECOND FLOOR LAUNDRY OPTION)**
976 SQ. FT.



OPT'L MAIN FLOOR PLAN



OPT'L DELUXE ENSUITE



OPT'L SECOND FLOOR LOFT

One Dr. David Friesen Drive
Winnipeg, Manitoba
R3X 0G8

Phone: (204) 224-4243
kensingtonhomes.com

All illustrations are artist's conception and may vary. Room dimensions are approximate. Windows and room sizes may vary with elevations. Mechanical equipment location and placement subject to change as required by building code and at discretion of builder. Furniture outlines for purpose of visualizing room layout only, furniture not included. Kensington Homes reserves the right to change material or specifications without notice.

