



A QUALICO Company

Award Winning

Elevation J



Features:

- 2 Storey Duplex
- 3 Bedrooms
- 2 ½ Bathrooms
- Many options and upgrades to choose from
- 1-2-5-10 National Home Warranty

Unit 1: 1,400 Sq. Ft.

Unit 2: 1,494 Sq. Ft.

Prices Starting at:
\$297,900 & \$303,900

*Includes Lot & net GST

2830 Plan

Elevation K



Not exactly as shown. Final drawings and elevation details are per offer to purchase and subject to architectural approval.

THE RIVERSTONE

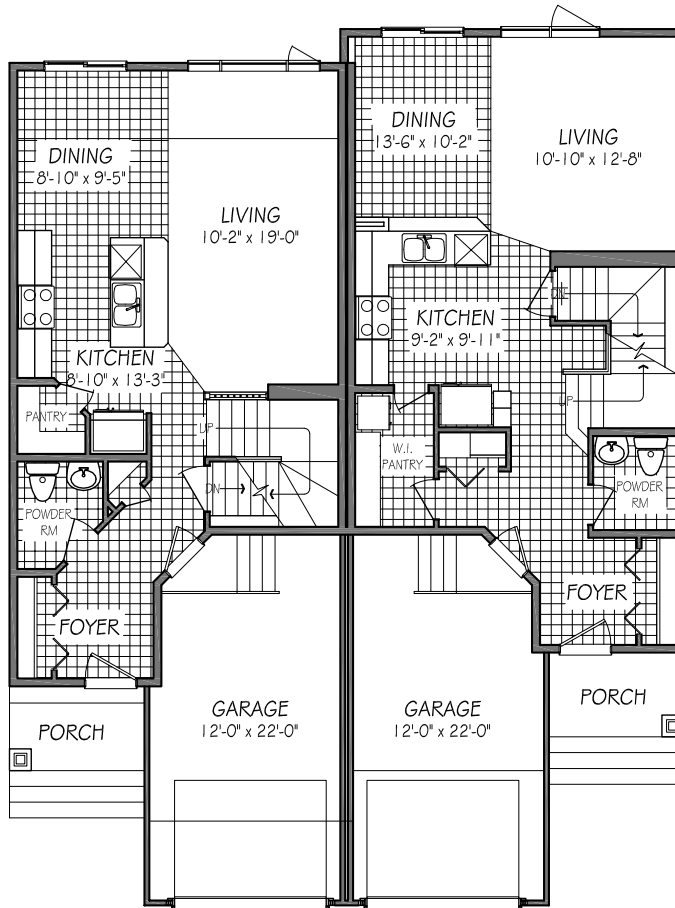


A QUALICO Company

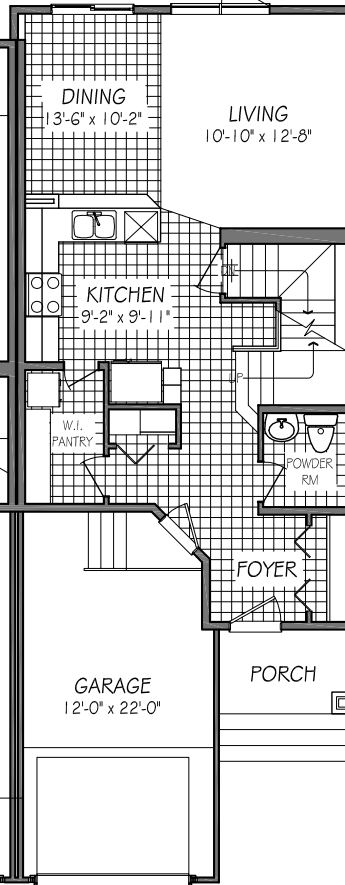
Award Winning

The Riverstone

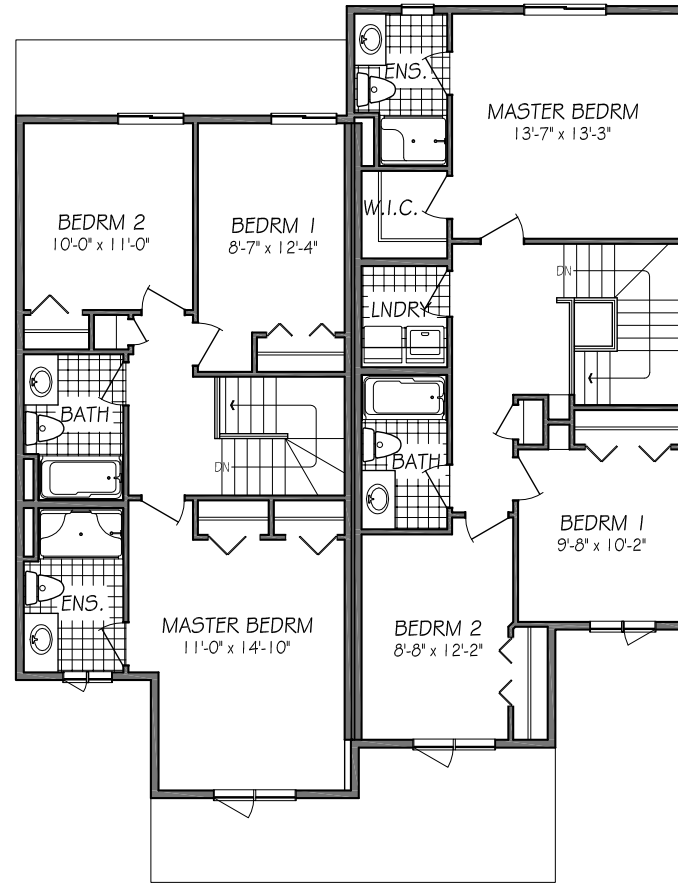
2830 Floor Plan



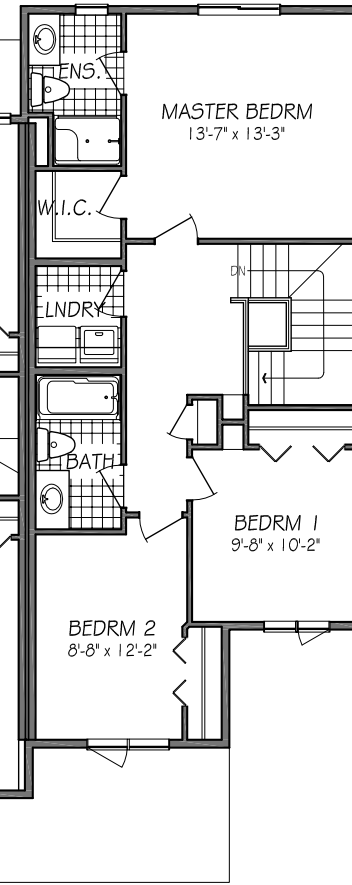
MAIN FLOOR PLAN
645 SQ. FT.



MAIN FLOOR PLAN
668 SQ. FT.



SECOND FLOOR PLAN
755 SQ. FT.



SECOND FLOOR PLAN
826 SQ. FT.

All illustrations are artist's conception and may vary. Room dimensions are approximate. Windows and room sizes may vary with elevations. Mechanical equipment location and placement subject to change as required by building code and at discretion of builder. Furniture outlines for purpose of visualizing room layout only, furniture not included. Kensington Homes reserves the right to change material or specifications without notice.

Riverstone (2830) Plan Highlights

EXTERIOR

Construction

- Engineered floor joists
- Piled foundation
- Concrete driveway

Garage Door

- 22' deep garage with stairs on the side for maximum space
- Garage door opener with one (1) remote
- Insulated 7' wide garage door
- Architectural windows in overhead door

Party Wall Construction

- R22 Roxul ComfortBatt insulation used on both sides of party wall to minimize sound transfer
- 5/8" type X drywall used on sides of house and party wall

Elevation

- Vinyl siding and/or stucco with Smart Trim
- Tapered columns at entryway
- Vinyl shakes
- Cultured stone

Wood Divider Fence

- 12' divider fence at rear of property

Windows and Doors

- Tri-pane or Dual Low-E windows and fibreglass front door



INTERIOR

Square Footage

- Unit 1: 1,400 sq. ft.
- Unit 2: 1,494 sq. ft.

Electrical

- Electric furnace
- 200 amp panel
- Alarm system rough-in
- Central vac rough-in
- Recessed lighting
- OTR direct vented
- Motion switch in pantry

Flooring

- Fascinating Shaw carpet with upgraded 7 lb underlay

Plumbing

- One (1) piece shower with glass door at ensuite

Cabinets

- Maple cabinets / vanities / melamine ends
- Large walk-in pantry or butler's pantry

Design Centre

- Three (3) hours of one-on-one time in our modern Design Centre with our professional interior designer

Finishing

- Two (2) panel doors
- 36" high vanity mirrors

Lisa Lawrence

New Home Sales Representative

Rancho Realty (Manitoba) Ltd.

Phone: (204) 291-9305

Email: llawrence@kensingtonhomesltd.com